

KD-Validated Anti-BCL2 like 12 Rabbit Monoclonal Antibody
Rabbit monoclonal antibody
Catalog # AGI1347**Specification**

KD-Validated Anti-BCL2 like 12 Rabbit Monoclonal Antibody - Product Information

Application	WB, FC
Primary Accession	Q9HB09
Reactivity	Human
Clonality	Monoclonal
Isotype	Rabbit IgG
Calculated MW	Predicted, 27 kDa, observed, 30 kDa
Gene Name	KDa BCL2L12
Aliases	BCL2L12; BCL2 Like 12; BCL2-Like 12 (Proline Rich); Bcl-2-Like Protein 12; Bcl-2 Related Proline-Rich Protein; Bcl-2-Related Proline-Rich Protein; Bcl2-L-12; BPR
Immunogen	A synthesized peptide derived from human BCL2L12

KD-Validated Anti-BCL2 like 12 Rabbit Monoclonal Antibody - Additional Information

Gene ID	83596
Other Names	
Bcl-2-like protein 12, Bcl2-L-12, Bcl-2-related proline-rich protein, BCL2L12 (http://www.genenames.org/cgi-bin/gene_symbol_report?hgnc_id=13787), BPR	

KD-Validated Anti-BCL2 like 12 Rabbit Monoclonal Antibody - Protein Information**Name** BCL2L12 ([HGNC:13787](#))**Synonyms** BPR**Tissue Location**

Expressed mainly in breast, thymus, prostate, fetal liver, colon, placenta, pancreas, small intestine, spinal cord, kidney, and bone marrow and to a lesser extent in many other tissues. Isoform 2 is primarily expressed in skeletal muscle

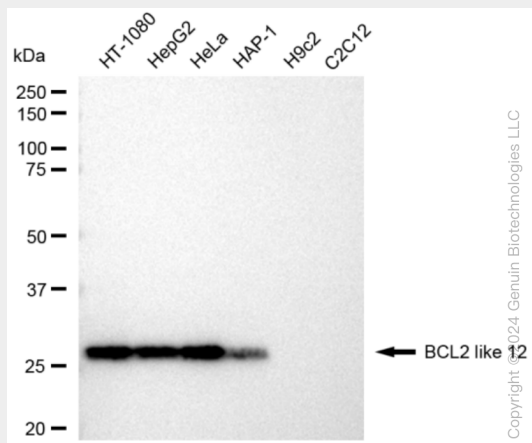
KD-Validated Anti-BCL2 like 12 Rabbit Monoclonal Antibody - Protocols

Provided below are standard protocols that you may find useful for product applications.

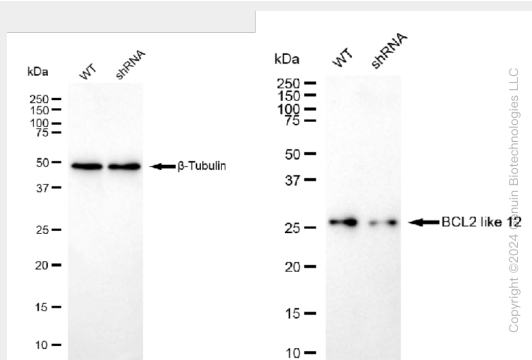
- [Western Blot](#)
- [Blocking Peptides](#)
- [Dot Blot](#)

- [Immunohistochemistry](#)
- [Immunofluorescence](#)
- [Immunoprecipitation](#)
- [Flow Cytometry](#)
- [Cell Culture](#)

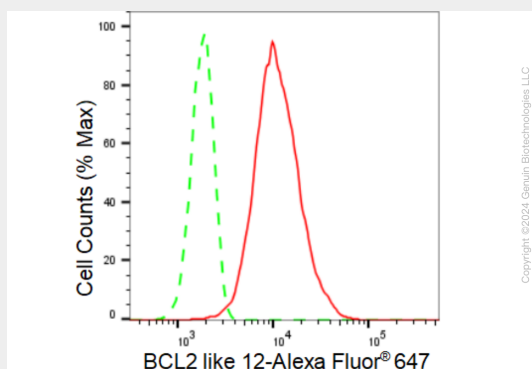
KD-Validated Anti-BCL2 like 12 Rabbit Monoclonal Antibody - Images



Western blotting analysis using anti-BCL2 like 12 antibody (Cat#AGI1347). Total cell lysates (30 µg) from various cell lines were loaded and separated by SDS-PAGE. The blot was incubated with anti-BCL2 like 12 antibody (Cat#AGI1347, 1:5,000) and HRP-conjugated goat anti-rabbit secondary antibody respectively.



Western blotting analysis using anti-BCL2 like 12 antibody (Cat#AGI1347). BCL2 like 12 expression in wild type (WT) and BCL2 like 12 shRNA knockdown (KD) HeLa cells with 30 µg of total cell lysates. β-Tubulin serves as a loading control. The blot was incubated with anti-BCL2 like 12 antibody (Cat#AGI1347, 1:5,000) and HRP-conjugated goat anti-rabbit secondary antibody respectively.



Flow cytometric analysis of BCL2 like 12 expression in HT-1080 cells using BCL2 like 12 antibody (Cat#AGI1347, 1:2,000). Green, isotype control; red, BCL2 like 12.