

KD-Validated Anti-LIM Homeobox 3 Rabbit Monoclonal Antibody
Rabbit monoclonal antibody
Catalog # AGI1355**Specification****KD-Validated Anti-LIM Homeobox 3 Rabbit Monoclonal Antibody - Product Information**

Application	WB, FC, ICC
Primary Accession	Q9UBR4
Reactivity	Rat, Human, Mouse
Clonality	Monoclonal
Isotype	Rabbit IgG
Calculated MW	Predicted, 43 kDa; observed, 43 kDa kDa
Gene Name	LHX3
Aliases	LHX3; LIM Homeobox 3; LIM/Homeobox Protein Lhx3; LIM Homeobox Protein 3; LIM/Homeodomain Protein LHX3; M2-LHX3; CPHD3; LIM3
Immunogen	A synthesized peptide derived from human LHX3

KD-Validated Anti-LIM Homeobox 3 Rabbit Monoclonal Antibody - Additional Information

Gene ID	8022
Other Names	
LIM/homeobox protein Lhx3, LIM homeobox protein 3, LHX3	

KD-Validated Anti-LIM Homeobox 3 Rabbit Monoclonal Antibody - Protein Information**Name** LHX3**Function**

Transcription factor. Recognizes and binds to the consensus sequence motif 5'-AATTAATTA-3' in the regulatory elements of target genes, such as glycoprotein hormones alpha chain CGA and visual system homeobox CHX10, positively modulating transcription; transcription can be co-activated by LDB2. Synergistically enhances transcription from the prolactin promoter in cooperation with POU1F1/Pit-1 (By similarity). Required for the establishment of the specialized cells of the pituitary gland and the nervous system (PubMed:21149718). Involved in the development of interneurons and motor neurons in cooperation with LDB1 and ISL1 (By similarity).

Cellular Location

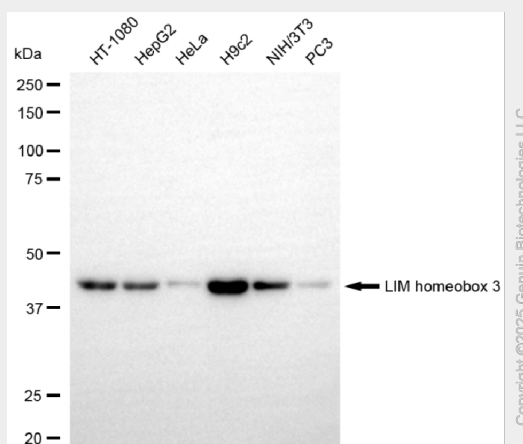
Nucleus.

KD-Validated Anti-LIM Homeobox 3 Rabbit Monoclonal Antibody - Protocols

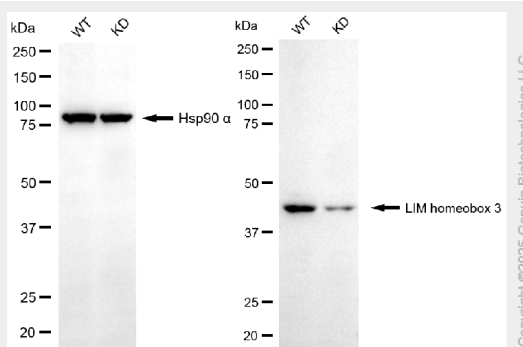
Provided below are standard protocols that you may find useful for product applications.

- [Western Blot](#)
- [Blocking Peptides](#)
- [Dot Blot](#)
- [Immunohistochemistry](#)
- [Immunofluorescence](#)
- [Immunoprecipitation](#)
- [Flow Cytometry](#)
- [Cell Culture](#)

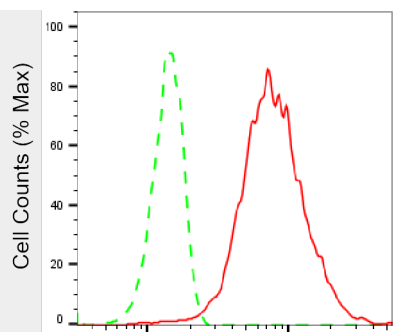
KD-Validated Anti-LIM Homeobox 3 Rabbit Monoclonal Antibody - Images



Western blotting analysis using anti-LIM homeobox 3 antibody (Cat#AGI1355). Total cell lysates (30 µg) from various cell lines were loaded and separated by SDS-PAGE. The blot was incubated with anti-LIM homeobox 3 antibody (Cat#AGI1355, 1:5,000) and HRP-conjugated goat anti-rabbit secondary antibody respectively.



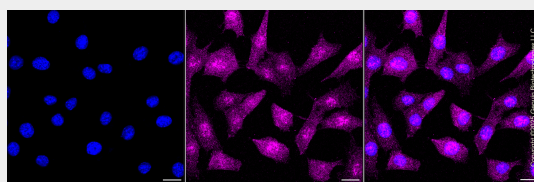
Western blotting analysis using anti-LIM homeobox 3 antibody (Cat#AGI1355). LIM homeobox 3 expression in wild-type (WT) and LIM homeobox 3 (LHX3) knockdown (KD) HSHC cells with 30 µg of total cell lysates. Hsp90 α serves as a loading control. The blot was incubated with anti-LIM homeobox 3 antibody (Cat#AGI1355, 1:5,000) and HRP-conjugated goat anti-rabbit secondary antibody respectively.



Copyright ©2025 Genulin Biotechnologies LLC

LIM homeobox 3-Alexa Fluor® 647

Flow cytometric analysis of LIM homeobox 3 expression in C2C12 cells using anti-LIM homeobox 3 antibody (Cat#AGI1355, 1:2,000). Green, isotype control; red, LIM homeobox 3.



Immunocytochemical staining of C2C12 cells with anti-LIM homeobox 3 antibody (Cat#AGI1355, 1:1,000). Nuclei were stained blue with DAPI; LIM homeobox 3 was stained magenta with Alexa Fluor® 647. Images were taken using Leica stellaris 5. Protein abundance based on laser intensity and smart gain: Medium. Scale bar, 20 μ m.