

**KD-Validated Anti-Rho GTPase activating protein 5 Rabbit Monoclonal Antibody**  
**Rabbit monoclonal antibody**  
**Catalog # AGI1361****Specification****KD-Validated Anti-Rho GTPase activating protein 5 Rabbit Monoclonal Antibody - Product Information**

Application	WB, FC, ICC
Primary Accession	<a href="#">Q13017</a>
Reactivity	Rat, Human, Mouse
Clonality	Monoclonal
Isotype	Rabbit IgG
Calculated MW	Predicted, 172 kDa , observed, 190 kDa
Gene Name	KDa
Aliases	ARHGAP5 ARHGAP5; Rho GTPase Activating Protein 5; P190-B; Rho-Type GTPase-Activating Protein 5; Rho GTPase-Activating Protein 5; Growth Factor Independent 2; P190BRhoGAP; RhoGAP5; RHOGAP5; GFI2; P100 RasGAP-Associated P105 Protein; P105 RhoGAP; P190BRHOGAP
Immunogen	A synthesized peptide derived from human RhoGAP

**KD-Validated Anti-Rho GTPase activating protein 5 Rabbit Monoclonal Antibody - Additional Information**

Gene ID	394
<b>Other Names</b>	
Rho GTPase-activating protein 5, Rho-type GTPase-activating protein 5, p190-B, ARHGAP5, RHOGAP5	

**KD-Validated Anti-Rho GTPase activating protein 5 Rabbit Monoclonal Antibody - Protein Information****Name** ARHGAP5**Synonyms** RHOGAP5**Function**

GTPase-activating protein for Rho family members (PubMed:&lt;a href="http://www.uniprot.org/citations/8537347" target="\_blank"&gt;8537347&lt;/a&gt;).

**Cellular Location**

Cytoplasm. Cell membrane; Peripheral membrane protein. Note=Also membrane-associated in a fibrillar pattern that colocalizes with the alpha5-beta1 integrin receptor (ITGA5/ITGB1) for fibronectin.

### Tissue Location

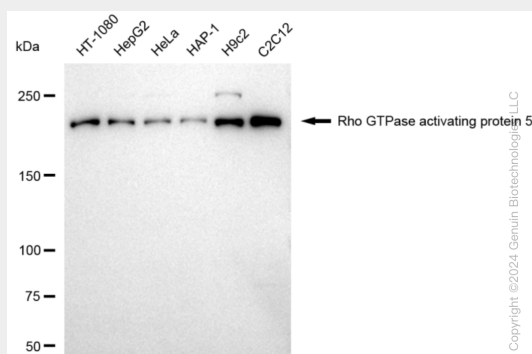
Detected in skin fibroblasts (at protein level) (PubMed:8537347).

### KD-Validated Anti-Rho GTPase activating protein 5 Rabbit Monoclonal Antibody - Protocols

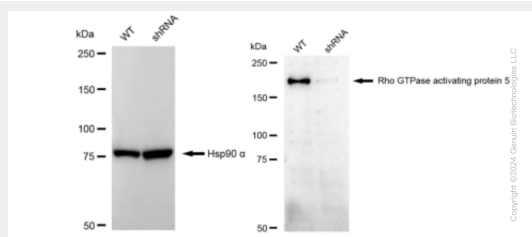
Provided below are standard protocols that you may find useful for product applications.

- [Western Blot](#)
- [Blocking Peptides](#)
- [Dot Blot](#)
- [Immunohistochemistry](#)
- [Immunofluorescence](#)
- [Immunoprecipitation](#)
- [Flow Cytometry](#)
- [Cell Culture](#)

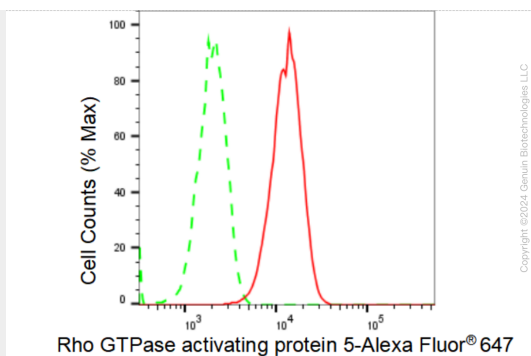
### KD-Validated Anti-Rho GTPase activating protein 5 Rabbit Monoclonal Antibody - Images



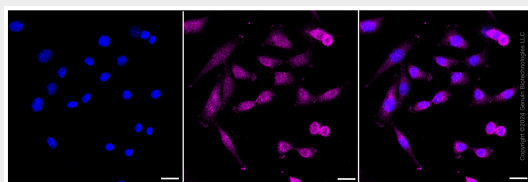
Western blotting analysis using anti-Rho GTPase activating protein 5 antibody (Cat#AGI1361). Total cell lysates (30 µg) from various cell lines were loaded and separated by SDS-PAGE. The blot was incubated with anti-Rho GTPase activating protein 5 antibody (Cat#AGI1361, 1:5,000) and HRP-conjugated goat anti-rabbit secondary antibody respectively.



Western blotting analysis using anti-Rho GTPase activating protein 5 antibody (Cat#AGI1361). Rho GTPase activating protein 5 expression in wild type (WT) and Rho GTPase activating protein 5 shRNA knockdown (KD) HeLa cells with 30 µg of total cell lysates. Hsp90 α serves as a loading control. The blot was incubated with anti-Rho GTPase activating protein 5 antibody (Cat#AGI1361, 1:5,000) and HRP-conjugated goat anti-rabbit secondary antibody respectively.



Flow cytometric analysis of Rho GTPase activating protein 5 expression in C2C12 cells using Rho GTPase activating protein 5 antibody (Cat#AGI1361, 1:2,000). Green, isotype control; red, Rho GTPase activating protein 5.



Immunocytochemical staining of C2C12 cells with Rho GTPase activating protein 5 antibody (Cat#AGI1361, 1:1,000). Nuclei were stained blue with DAPI; Rho GTPase activating protein 5 was stained magenta with Alexa Fluor® 647. Images were taken using Leica stellaris 5. Protein abundance based on laser Intensity and smart gain: Medium. Scale bar: 20  $\mu$ m.