

KD-Validated Anti-Phospho-BCAR1 (Y410) Rabbit Monoclonal Antibody
Rabbit monoclonal antibody
Catalog # AGI1363**Specification****KD-Validated Anti-Phospho-BCAR1 (Y410) Rabbit Monoclonal Antibody - Product Information**

Application	WB, FC
Primary Accession	P56945
Reactivity	Rat, Human, Mouse
Clonality	Monoclonal
Isotype	Rabbit IgG
Calculated MW	Predicted, 93 kDa , observed, 130 kDa
Gene Name	KDa
Aliases	BCAR1 BCAR1; BCAR1 Scaffold Protein, Cas Family Member; CASS1; CAS; Cas Scaffolding Protein Family Member 1; CRKAS; Breast Cancer Anti-Estrogen Resistance Protein 1; BCAR1, Cas Family Scaffolding Protein; BCAR1, Cas Family Scaffold Protein; P130Cas; Breast Cancer Anti-Estrogen Resistance 1; Crk-Associated Substrate P130Cas; Crk-Associated Substrate; CRK-Associated Substrate; P130CAS; P130cas; Crkas; CAS1
Immunogen	A synthesized peptide derived from human Phospho-BCAR1 (Y410)

KD-Validated Anti-Phospho-BCAR1 (Y410) Rabbit Monoclonal Antibody - Additional Information

Gene ID	9564
Other Names	
Breast cancer anti-estrogen resistance protein 1, CRK-associated substrate, Cas scaffolding protein family member 1, p130cas, BCAR1, CAS, CASS1, CRKAS	

KD-Validated Anti-Phospho-BCAR1 (Y410) Rabbit Monoclonal Antibody - Protein Information**Name** BCAR1**Synonyms** CAS, CASS1, CRKAS**Function**

Docking protein which plays a central coordinating role for tyrosine kinase-based signaling related to cell adhesion (PubMed:12432078, PubMed:<a href="http://www.uniprot.org/citations/12832404"

target="_blank">12832404). Implicated in induction of cell migration and cell branching (PubMed:12432078, PubMed:12832404, PubMed:17038317). Involved in the BCAR3-mediated inhibition of TGFB signaling (By similarity).

Cellular Location

Cell junction, focal adhesion. Cytoplasm Cell projection, axon {ECO:0000250|UniProtKB:Q61140} Note=Unphosphorylated form localizes in the cytoplasm (By similarity) Localizes to focal adhesion sites following integrin engagement (By similarity). {ECO:0000250|UniProtKB:Q61140}

Tissue Location

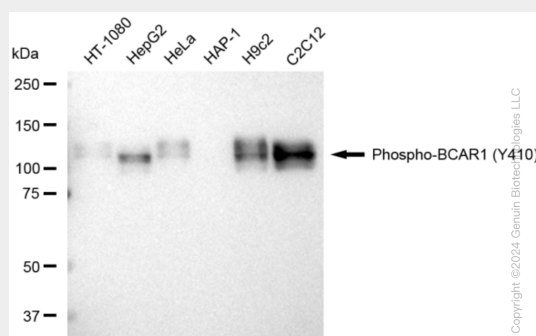
Expressed in B-cells (at protein level) (PubMed:9020138). Widely expressed with an abundant expression in the testis (PubMed:10639512). Low level of expression seen in the liver, thymus, and peripheral blood leukocytes (PubMed:10639512)

KD-Validated Anti-Phospho-BCAR1 (Y410) Rabbit Monoclonal Antibody - Protocols

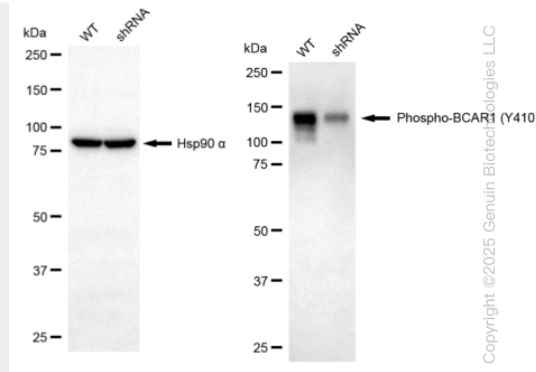
Provided below are standard protocols that you may find useful for product applications.

- [Western Blot](#)
- [Blocking Peptides](#)
- [Dot Blot](#)
- [Immunohistochemistry](#)
- [Immunofluorescence](#)
- [Immunoprecipitation](#)
- [Flow Cytometry](#)
- [Cell Culture](#)

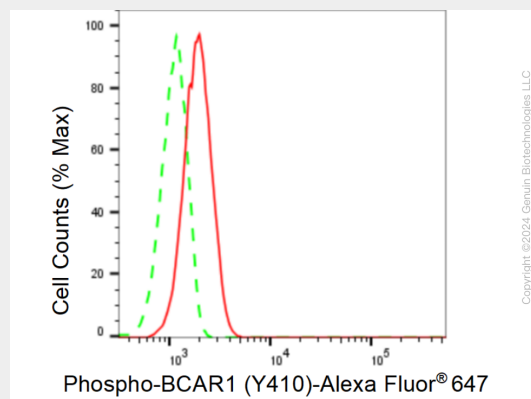
KD-Validated Anti-Phospho-BCAR1 (Y410) Rabbit Monoclonal Antibody - Images



Western blotting analysis using anti-Phospho-BCAR1 (Y410) antibody (Cat#AGI1363). Total cell lysates (30 µg) from various cell lines were loaded and separated by SDS-PAGE. The blot was incubated with anti-Phospho-BCAR1 (Y410) antibody (Cat#AGI1363, 1:5,000) and HRP-conjugated goat anti-rabbit secondary antibody respectively.



Western blotting analysis using anti-Phospho-BCAR1 (Y410) antibody (Cat#AGI1363). Phospho-BCAR1 (Y410) expression in wild type (WT) and BCAR1 shRNA knockdown (KD) HeLa cells with 20 µg of total cell lysates. Hsp90 α serves as a loading control. The blot was incubated with anti-Phospho-BCAR1 (Y410) antibody (Cat#AGI1363, 1:5,000) and HRP-conjugated goat anti-rabbit secondary antibody respectively.



Flow cytometric analysis of Phospho-BCAR1 (Y410) expression in C2C12 cells using Phospho-BCAR1 (Y410) antibody (Cat#AGI1363, 1:2,000). Green, isotype control; red, Phospho-BCAR1 (Y410).