

KD-Validated Anti-Phospho-eIF4B (S406) Rabbit Monoclonal Antibody
Rabbit monoclonal antibody
Catalog # AGI1366**Specification**

KD-Validated Anti-Phospho-eIF4B (S406) Rabbit Monoclonal Antibody - Product Information

Application	WB, FC
Primary Accession	P23588
Reactivity	Rat, Human, Mouse
Clonality	Monoclonal
Isotype	Rabbit IgG
Calculated MW	Predicted, 69 kDa , observed, 75 kDa
Gene Name	KDa eIF4B
Aliases	EIF4B; Eukaryotic Translation Initiation Factor 4B; EIF-4B; PRO1843
Immunogen	A synthesized peptide derived from human Phospho-eIF4B (S406)

KD-Validated Anti-Phospho-eIF4B (S406) Rabbit Monoclonal Antibody - Additional Information

Gene ID	1975
Other Names	
Eukaryotic translation initiation factor 4B, eIF-4B, EIF4B	

KD-Validated Anti-Phospho-eIF4B (S406) Rabbit Monoclonal Antibody - Protein Information**Name** EIF4B**Function**

Required for the binding of mRNA to ribosomes. Functions in close association with EIF4-F and EIF4-A. Binds near the 5'-terminal cap of mRNA in presence of EIF-4F and ATP. Promotes the ATPase activity and the ATP-dependent RNA unwinding activity of both EIF4-A and EIF4-F.

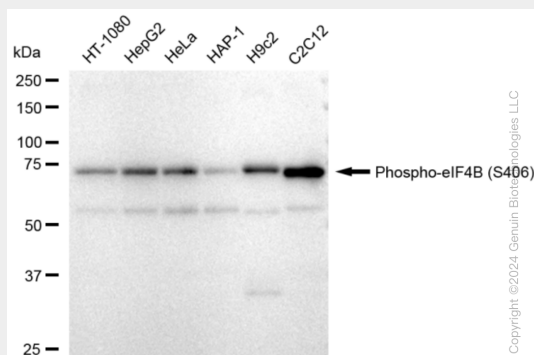
KD-Validated Anti-Phospho-eIF4B (S406) Rabbit Monoclonal Antibody - Protocols

Provided below are standard protocols that you may find useful for product applications.

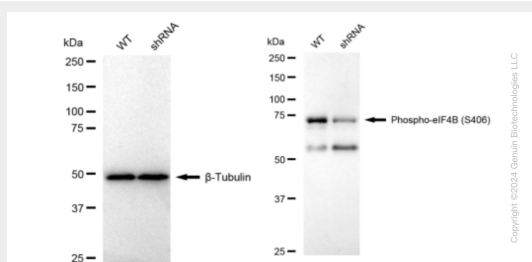
- [Western Blot](#)
- [Blocking Peptides](#)
- [Dot Blot](#)
- [Immunohistochemistry](#)
- [Immunofluorescence](#)
- [Immunoprecipitation](#)

- [Flow Cytometry](#)
- [Cell Culture](#)

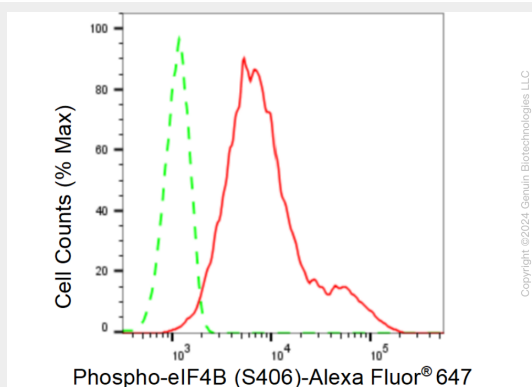
KD-Validated Anti-Phospho-eIF4B (S406) Rabbit Monoclonal Antibody - Images



Western blotting analysis using anti-Phospho-eIF4B (S406) antibody (Cat#61645). Total cell lysates (30 µg) from various cell lines were loaded and separated by SDS-PAGE. The blot was incubated with anti-Phospho-eIF4B (S406) antibody (Cat#61645, 1:5,000) and HRP-conjugated goat anti-rabbit secondary antibody (Cat#201, 1:20,000) respectively. Image was developed using FeQ™ ECL Substrate Kit (Cat#226).



Western blotting analysis using anti-Phospho-eIF4B (S406) antibody (Cat#61645). Phospho-eIF4B (S406) expression in wild type (WT) and Phospho-eIF4B (S406) shRNA knockdown (KD) HeLa cells with 30 µg of total cell lysates. β-Tubulin serves as a loading control. The blot was incubated with anti-Phospho-eIF4B (S406) antibody (Cat#61645, 1:5,000) and HRP-conjugated goat anti-rabbit secondary antibody (Cat#201, 1:20,000) respectively. Image was developed using FeQ™ ECL Substrate Kit (Cat#226).



Flow cytometric analysis of Phospho-eIF4B (S406) expression in C2C12 cells using Phospho-eIF4B (S406) antibody (61645, 1:2,000). Green, isotype control; red, Phospho-eIF4B (S406).