

**KD-Validated Anti-Amyloid beta precursor like protein 2 Rabbit Monoclonal Antibody**  
**Rabbit monoclonal antibody**  
**Catalog # AGI1367****Specification****KD-Validated Anti-Amyloid beta precursor like protein 2 Rabbit Monoclonal Antibody - Product Information**

Application	WB, FC, ICC
Primary Accession	<a href="#">Q06481</a>
Reactivity	Human
Clonality	Monoclonal
Isotype	Rabbit IgG
Calculated MW	Predicted, 87 kDa , observed, 87-140 kDa
Gene Name	KDa
Aliases	APLP2 APLP2; Amyloid Beta Precursor Like Protein 2; APPH 2; Amyloid Beta (A4) Precursor-Like Protein 2; APPL2; Sperm Membrane Protein YWK-II; CDEI Box-Binding Protein; APLP-2; CDEBP; Amyloid Precursor Protein Homolog HSD-2; Testicular Tissue Protein Li 23; Amyloid Protein Homolog; Amyloid-Like Protein 2
Immunogen	A synthesized peptide derived from human APLP2

**KD-Validated Anti-Amyloid beta precursor like protein 2 Rabbit Monoclonal Antibody - Additional Information**Gene ID **334****Other Names**

Amyloid beta precursor like protein 2 {ECO:0000312|HGNC:HGNC:598}, APPH, Amyloid beta (A4) precursor-like protein 2, APLP2 ([http://www.genenames.org/cgi-bin/gene\\_symbol\\_report?hgnc\\_id=598](http://www.genenames.org/cgi-bin/gene_symbol_report?hgnc_id=598))

**KD-Validated Anti-Amyloid beta precursor like protein 2 Rabbit Monoclonal Antibody - Protein Information****Name** APLP2 ([HGNC:598](#))**Function**

May play a role in the regulation of hemostasis. The soluble form may have inhibitory properties towards coagulation factors. May interact with cellular G-protein signaling pathways. May bind to the DNA 5'-GTCACATG-3'(CDEI box). Inhibits trypsin, chymotrypsin, plasmin, factor XIA and plasma and glandular kallikrein. Modulates the Cu/Zn nitric oxide-catalyzed autodegradation of GPC1 heparan sulfate side chains in fibroblasts (By similarity).

## Cellular Location

Cell membrane; Single-pass type I membrane protein. Nucleus

## Tissue Location

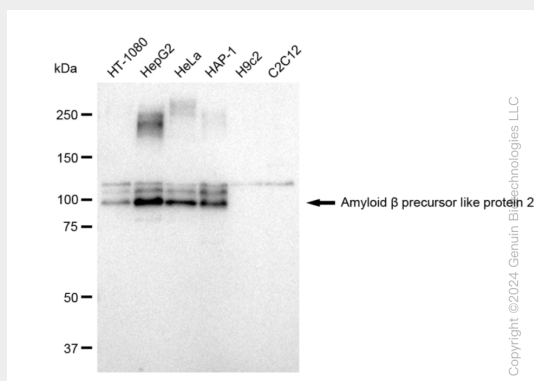
Expressed in placenta, brain, heart, lung, liver, kidney and endothelial tissues

## KD-Validated Anti-Amyloid beta precursor like protein 2 Rabbit Monoclonal Antibody - Protocols

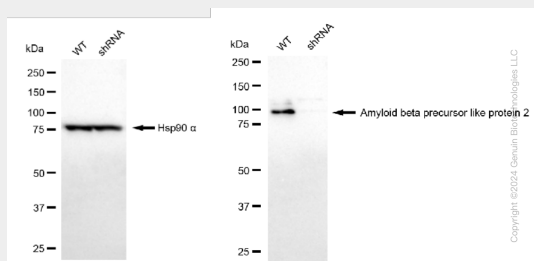
Provided below are standard protocols that you may find useful for product applications.

- [Western Blot](#)
- [Blocking Peptides](#)
- [Dot Blot](#)
- [Immunohistochemistry](#)
- [Immunofluorescence](#)
- [Immunoprecipitation](#)
- [Flow Cytometry](#)
- [Cell Culture](#)

## KD-Validated Anti-Amyloid beta precursor like protein 2 Rabbit Monoclonal Antibody - Images

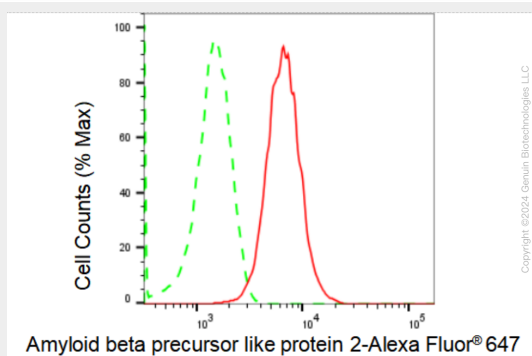


Western blotting analysis using anti-Amyloid beta precursor like protein 2 antibody (Cat#AGI1367). Total cell lysates (30 µg) from various cell lines were loaded and separated by SDS-PAGE. The blot was incubated with anti-Amyloid beta precursor like protein 2 antibody (Cat#AGI1367, 1:5,000) and HRP-conjugated goat anti-rabbit secondary antibody respectively.

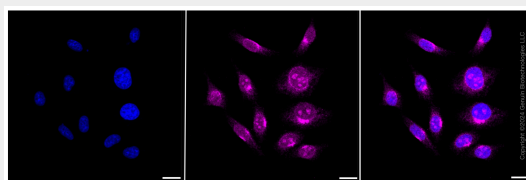


Western blotting analysis using anti-Amyloid beta precursor like protein 2 antibody (Cat#AGI1367). Amyloid beta precursor like protein 2 expression in wild type (WT) and amyloid beta precursor like protein 2 shRNA knockdown (KD) HeLa cells with 30 µg of total cell lysates. β-Tubulin serves as a loading control. The blot was incubated with anti-Amyloid beta precursor like protein 2 antibody (Cat#AGI1367, 1:5,000) and HRP-conjugated goat anti-rabbit secondary

antibody respectively.



Flow cytometric analysis of Amyloid beta precursor like protein 2 expression in HepG2 cells using Amyloid beta precursor like protein 2 antibody (Cat#AGI1367, 1:2,000). Green, isotype control; red, Amyloid beta precursor like protein 2.



Immunocytochemical staining of HepG2 cells with Amyloid beta precursor like protein 2 antibody (Cat#AGI1367, 1:1,000). Nuclei were stained blue with DAPI; Amyloid beta precursor like protein 2 was stained magenta with Alexa Fluor® 647. Images were taken using Leica stellaris 5. Protein abundance based on laser Intensity and smart gain: High. Scale bar: 20  $\mu$ m.