

**KD-Validated Anti-SNRPA1 Rabbit Monoclonal Antibody**  
**Rabbit monoclonal antibody**  
**Catalog # AGI1372****Specification****KD-Validated Anti-SNRPA1 Rabbit Monoclonal Antibody - Product Information**

Application	WB, FC, ICC
Primary Accession	<a href="#">P09661</a>
Reactivity	Rat, Human, Mouse
Clonality	Monoclonal
Isotype	Rabbit IgG
Calculated MW	Predicted, 28 kDa; observed, 28 kDa
Gene Name	<b>SNRPA1</b>
Aliases	<b>SNRPA1; Small Nuclear Ribonucleoprotein Polypeptide A'; Lea1; U2A'; U2 Small Nuclear Ribonucleoprotein A'; U2 SnRNP A'; U2 Small Nuclear Ribonucleoprotein Polypeptide A'</b>
Immunogen	<b>A synthesized peptide derived from human SNRPA1</b>

**KD-Validated Anti-SNRPA1 Rabbit Monoclonal Antibody - Additional Information**

Gene ID	<b>6627</b>
<b>Other Names</b>	
U2 small nuclear ribonucleoprotein A', U2 snRNP A', SNRPA1	

**KD-Validated Anti-SNRPA1 Rabbit Monoclonal Antibody - Protein Information****Name** SNRPA1**Function**

Involved in pre-mRNA splicing as component of the spliceosome (PubMed:[11991638](http://www.uniprot.org/citations/11991638), PubMed:[27035939](http://www.uniprot.org/citations/27035939), PubMed:[28076346](http://www.uniprot.org/citations/28076346), PubMed:[28502770](http://www.uniprot.org/citations/28502770), PubMed:[28781166](http://www.uniprot.org/citations/28781166), PubMed:[32494006](http://www.uniprot.org/citations/32494006)). Associated with sn-RNP U2, where it contributes to the binding of stem loop IV of U2 snRNA (PubMed:[27035939](http://www.uniprot.org/citations/27035939), PubMed:[32494006](http://www.uniprot.org/citations/32494006), PubMed:[9716128](http://www.uniprot.org/citations/9716128)).

**Cellular Location**

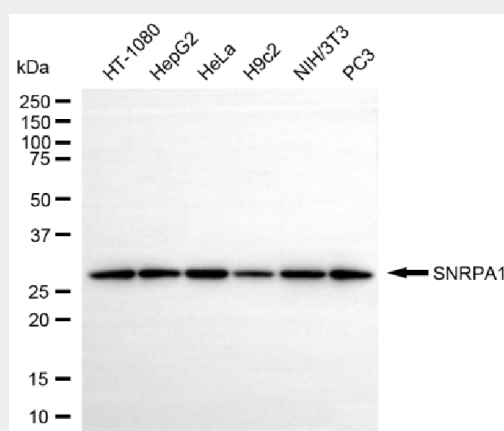
Nucleus

## KD-Validated Anti-SNRPA1 Rabbit Monoclonal Antibody - Protocols

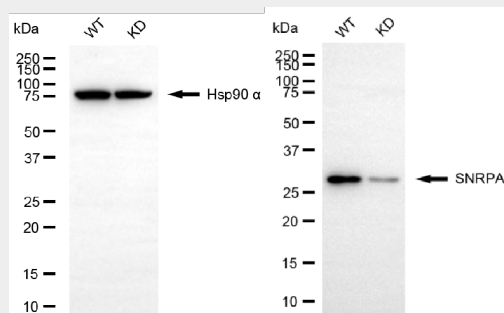
Provided below are standard protocols that you may find useful for product applications.

- [Western Blot](#)
- [Blocking Peptides](#)
- [Dot Blot](#)
- [Immunohistochemistry](#)
- [Immunofluorescence](#)
- [Immunoprecipitation](#)
- [Flow Cytometry](#)
- [Cell Culture](#)

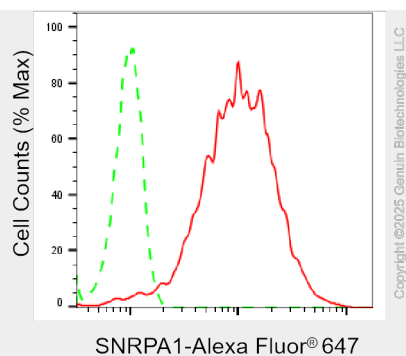
## KD-Validated Anti-SNRPA1 Rabbit Monoclonal Antibody - Images



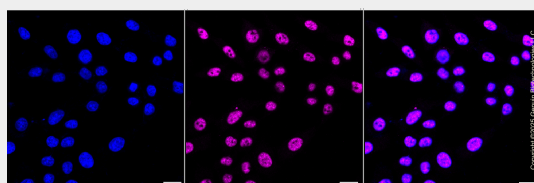
Western blotting analysis using anti-SNRPA1 antibody (Cat#AGI1372). Total cell lysates (30 µg) from various cell lines were loaded and separated by SDS-PAGE. The blot was incubated with anti-SNRPA1 antibody (Cat#AGI1372, 1:5,000) and HRP-conjugated goat anti-rabbit secondary antibody respectively.



Western blotting analysis using anti-SNRPA1 antibody (Cat#AGI1372). SNRPA1 expression in wild-type (WT) and SNRPA1 knockdown (KD) HeLa cells with 20 µg of total cell lysates. Hsp90 α serves as a loading control. The blot was incubated with anti-SNRPA1 antibody (Cat#AGI1372, 1:5,000) and HRP-conjugated goat anti-rabbit secondary antibody respectively.



Flow cytometric analysis of SNRPA1 expression in HepG2 cells using anti-SNRPA1 antibody (Cat#AGI1372, 1:2,000). Green, isotype control; red, SNRPA1.



Immunocytochemical staining of HepG2 cells with anti-SNRPA1 antibody (Cat#AGI1372, 1:1,000). Nuclei were stained blue with DAPI; SNRPA1 was stained magenta with Alexa Fluor® 647. Images were taken using Leica stellaris 5. Protein abundance based on laser Intensity and smart gain: Medium. Scale bar, 20 µm.