

KD-Validated Anti-RAB5C Rabbit Monoclonal Antibody
Rabbit monoclonal antibody
Catalog # AGI1374**Specification****KD-Validated Anti-RAB5C Rabbit Monoclonal Antibody - Product Information**

Application	WB, FC, ICC
Primary Accession	P51148
Reactivity	Rat, Human, Mouse
Clonality	Monoclonal
Isotype	Rabbit IgG
Calculated MW	Predicted, 23 kDa; observed, 23 kDa kDa
Gene Name	RAB5C
Aliases	RAB5C; RAB5C, Member RAS Oncogene Family; RAB5CL; RABL; RAB5C, Member Of RAS Oncogene Family; Ras-Related Protein Rab-5C; L1880; RAB5L; RAB, Member Of RAS Oncogene Family-Like; EC 3.6.5.2
Immunogen	A synthesized peptide derived from human RAB5C / RABL

KD-Validated Anti-RAB5C Rabbit Monoclonal Antibody - Additional Information

Gene ID	5878
Other Names	Ras-related protein Rab-5C, 3.6.5.2, L1880, RAB5L, RAB5C, RABL

KD-Validated Anti-RAB5C Rabbit Monoclonal Antibody - Protein Information

Name RAB5C ([HGNC:9785](#))

Synonyms RABL

Function

The small GTPases Rab are key regulators of intracellular membrane trafficking, from the formation of transport vesicles to their fusion with membranes. Rabs cycle between an inactive GDP-bound form and an active GTP-bound form that is able to recruit to membranes different sets of downstream effectors directly responsible for vesicle formation, movement, tethering and fusion.

Cellular Location

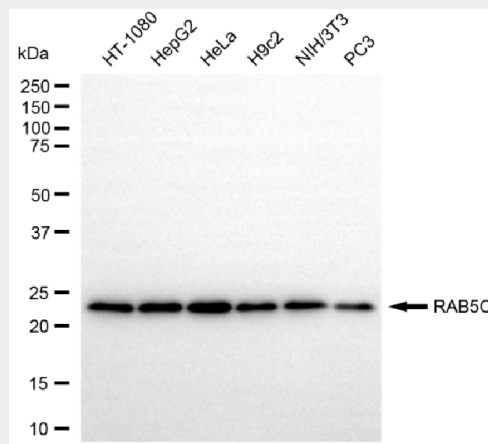
Cell membrane {ECO:0000250|UniProtKB:P20339}; Lipid-anchor {ECO:0000250|UniProtKB:P20339}; Cytoplasmic side {ECO:0000250|UniProtKB:P20339}. Early endosome membrane {ECO:0000250|UniProtKB:P20339}; Lipid-anchor {ECO:0000250|UniProtKB:P20339}. Melanosome. Note=Identified by mass spectrometry in melanosome fractions from stage I to stage IV

KD-Validated Anti-RAB5C Rabbit Monoclonal Antibody - Protocols

Provided below are standard protocols that you may find useful for product applications.

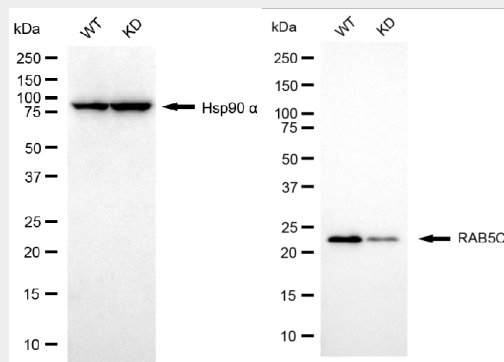
- [Western Blot](#)
- [Blocking Peptides](#)
- [Dot Blot](#)
- [Immunohistochemistry](#)
- [Immunofluorescence](#)
- [Immunoprecipitation](#)
- [Flow Cytometry](#)
- [Cell Culture](#)

KD-Validated Anti-RAB5C Rabbit Monoclonal Antibody - Images



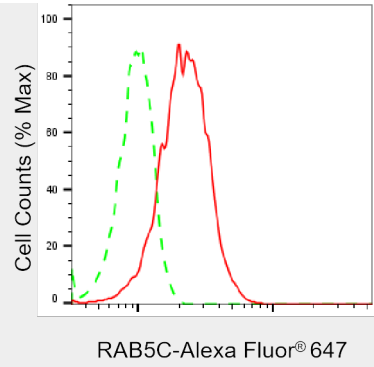
Copyright ©2025 Genuin Biotechnologies LLC

Western blotting analysis using anti-RAB5C antibody (Cat#61660). Total cell lysates (30 µg) from various cell lines were loaded and separated by SDS-PAGE. The blot was incubated with anti-RAB5C antibody (Cat#61660, 1:5,000) and HRP-conjugated goat anti-rabbit secondary antibody (Cat#201, 1:20,000) respectively. Image was developed using NaQ™ ECL Substrate Kit (Cat#716).

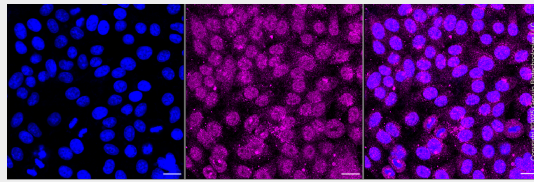


Copyright ©2025 Genuin Biotechnologies LLC

Western blotting analysis using anti-RAB5C antibody (Cat#61660). RAB5C expression in wild type (WT) and RAB5C knockdown (KD) HSHC cells with 20 µg of total cell lysates. Hsp90 α serves as a loading control. The blot was incubated with anti-RAB5C antibody (Cat#61660, 1:5,000) and HRP-conjugated goat anti-rabbit secondary antibody (Cat#201, 1:20,000) respectively. Image was developed using NaQ™ ECL Substrate Kit (Cat#716).



Flow cytometric analysis of RAB5C expression in HepG2 cells using anti-RAB5C antibody (Cat#61660, 1:2,000). Green, isotype control; red, RAB5C.



Immunocytochemical staining of HepG2 cells with anti-RAB5C antibody (Cat#61660, 1:1,000). Nuclei were stained blue with DAPI; RAB5C was stained magenta with Alexa Fluor® 647. Images were taken using Leica stellaris 5. Protein abundance based on laser Intensity and smart gain: Medium. Scale bar, 20 μ m.