

KD-Validated Anti-Thymidylate Synthase Rabbit Monoclonal Antibody
Rabbit monoclonal antibody
Catalog # AGI1380**Specification**

KD-Validated Anti-Thymidylate Synthase Rabbit Monoclonal Antibody - Product Information

Application	WB, FC, ICC
Primary Accession	P04818
Reactivity	Human, Mouse
Clonality	Monoclonal
Isotype	Rabbit IgG
Calculated MW	Predicted, 36 kDa; observed, 36 kDa kDa
Gene Name	TYMS
Aliases	TYMS; Thymidylate Synthetase; HsT422; Tsase; TMS; TS; Thymidylate Synthase; EC 2.1.1.45; TSase; DKCD
Immunogen	A synthesized peptide derived from human Thymidylate Synthase

KD-Validated Anti-Thymidylate Synthase Rabbit Monoclonal Antibody - Additional Information

Gene ID	7298
Other Names	
Thymidylate synthase, TS, TSase, 2.1.1.45, TYMS (HGNC:12441), TS	

KD-Validated Anti-Thymidylate Synthase Rabbit Monoclonal Antibody - Protein Information**Name** TYMS ([HGNC:12441](#))**Synonyms** TS**Function**

Catalyzes the reductive methylation of 2'-deoxyuridine 5'- monophosphate (dUMP) to thymidine 5'-monophosphate (dTMP), using the cosubstrate, 5,10- methylenetetrahydrofolate (CH₂H₄folate) as a 1- carbon donor and reductant and contributes to the de novo mitochondrial thymidylate biosynthesis pathway.

Cellular Location

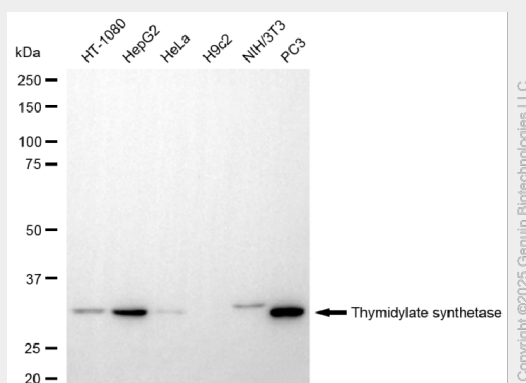
Nucleus. Cytoplasm. Mitochondrion. Mitochondrion matrix. Mitochondrion inner membrane

KD-Validated Anti-Thymidylate Synthase Rabbit Monoclonal Antibody - Protocols

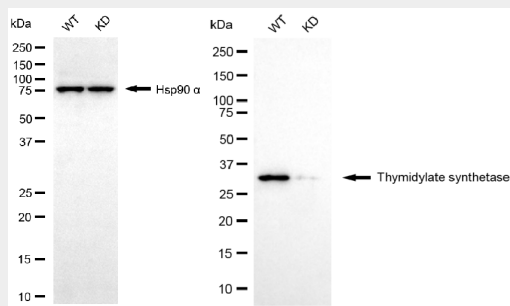
Provided below are standard protocols that you may find useful for product applications.

- [Western Blot](#)
- [Blocking Peptides](#)
- [Dot Blot](#)
- [Immunohistochemistry](#)
- [Immunofluorescence](#)
- [Immunoprecipitation](#)
- [Flow Cytometry](#)
- [Cell Culture](#)

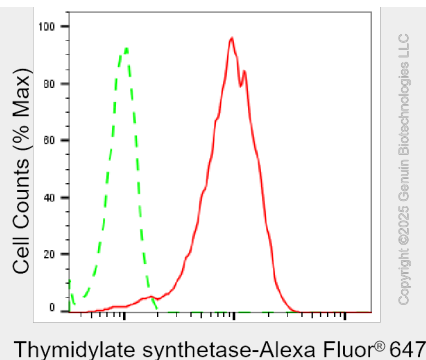
KD-Validated Anti-Thymidylate Synthase Rabbit Monoclonal Antibody - Images



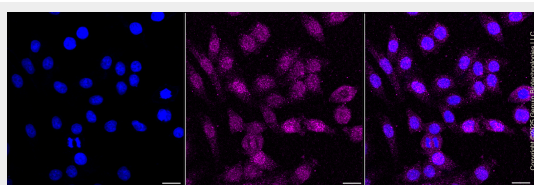
Western blotting analysis using anti-thymidylate synthetase antibody (Cat#AGI1380). Total cell lysates (30 μ g) from various cell lines were loaded and separated by SDS-PAGE. The blot was incubated with anti-thymidylate synthetase antibody (Cat#AGI1380, 1:5,000) and HRP-conjugated goat anti rabbit secondary antibody respectively.



Western blotting analysis using anti-thymidylate synthetase antibody (Cat#AGI1380). Thymidylate synthetase expression in wild type (WT) and thymidylate synthetase (TYMS) knockdown (KD) HSHC cells with 20 μ g of total cell lysates. Hsp90 α serves as a loading control. The blot was incubated with anti-thymidylate synthetase antibody (Cat#AGI1380, 1:5,000) and HRP-conjugated goat anti-rabbit secondary antibody respectively.



Flow cytometric analysis of Thymidylate synthetase expression in HepG2 cells using anti-Thymidylate synthetase antibody (Cat#AGI1380, 1:2,000). Green, isotype control; red, Thymidylate synthetase.



Immunocytochemical staining of HepG2 cells with anti-Thymidylate synthetase antibody (Cat#AGI1380, 1:1,000). Nuclei were stained blue with DAPI; Thymidylate synthetase was stained magenta with Alexa Fluor® 647. Images were taken using Leica stellaris 5. Protein abundance based on laser Intensity and smart gain: Medium. Scale bar, 20 µm.