

KD-Validated Anti-IQGAP2 Rabbit Monoclonal Antibody
Rabbit monoclonal antibody
Catalog # AGI1382**Specification**

KD-Validated Anti-IQGAP2 Rabbit Monoclonal Antibody - Product Information

Application	WB, ICC
Primary Accession	Q13576
Reactivity	Human
Clonality	Monoclonal
Isotype	Rabbit IgG
Calculated MW	Predicted, 181 kDa , observed, 181 kDa kDa
Gene Name	IQGAP2
Aliases	IQGAP2; IQ Motif Containing GTPase Activating Protein 2; Ras GTPase-Activating-Like Protein IQGAP2
Immunogen	A synthesized peptide derived from human IQGAP2

KD-Validated Anti-IQGAP2 Rabbit Monoclonal Antibody - Additional Information

Gene ID	10788
Other Names	
Ras GTPase-activating-like protein IQGAP2, IQGAP2	

KD-Validated Anti-IQGAP2 Rabbit Monoclonal Antibody - Protein Information**Name** IQGAP2**Function**

Binds to activated CDC42 and RAC1 but does not seem to stimulate their GTPase activity.
Associates with calmodulin.

Tissue Location

Isoform 2 expression is enhanced in testis.

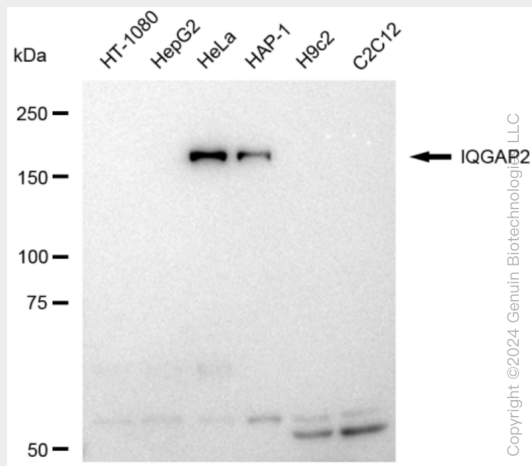
KD-Validated Anti-IQGAP2 Rabbit Monoclonal Antibody - Protocols

Provided below are standard protocols that you may find useful for product applications.

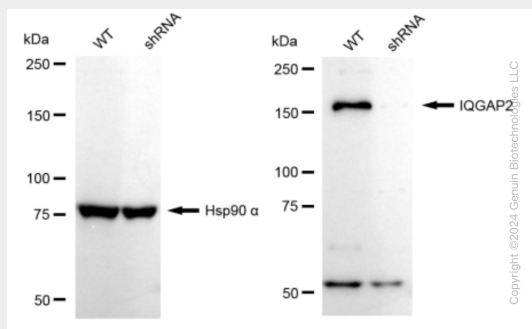
- [Western Blot](#)
- [Blocking Peptides](#)
- [Dot Blot](#)
- [Immunohistochemistry](#)
- [Immunofluorescence](#)

- [Immunoprecipitation](#)
- [Flow Cytometry](#)
- [Cell Culture](#)

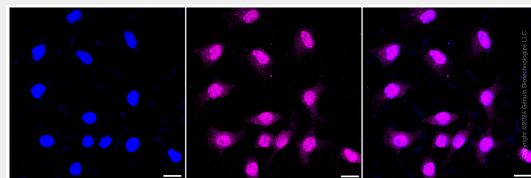
KD-Validated Anti-IQGAP2 Rabbit Monoclonal Antibody - Images



Western blotting analysis using anti-IQGAP2 antibody (Cat#AGI1382). Total cell lysates (30 µg) from various cell lines were loaded and separated by SDS-PAGE. The blot was incubated with anti-IQGAP2 antibody (Cat#AGI1382, 1:5,000) and HRP-conjugated goat anti-rabbit secondary antibody respectively.



Western blotting analysis using anti-IQGAP2 antibody (Cat#AGI1382). IQGAP2 expression in wild type (WT) and IQGAP2 shRNA knockdown (KD) 293T cells with 30 µg of total cell lysates. Hsp90 α serves as a loading control. The blot was incubated with anti-IQGAP2 antibody (Cat#AGI1382, 1:5,000) and HRP-conjugated goat anti-rabbit secondary antibody respectively.



Immunocytochemical staining of HeLa cells with IQGAP2 antibody (Cat#AGI1382, 1:1,000). Nuclei were stained blue with DAPI; IQGAP2 was stained magenta with Alexa Fluor® 647. Images were taken using Leica stellaris 5. Protein abundance based on laser Intensity and smart gain: Low. Scale bar: 20 µm.