

**KD-Validated Anti-RAN binding protein 9 Rabbit Monoclonal Antibody**  
Rabbit monoclonal antibody  
Catalog # AGI1396**Specification****KD-Validated Anti-RAN binding protein 9 Rabbit Monoclonal Antibody - Product Information**

Application	WB, FC, ICC
Primary Accession	<a href="#">O96S59</a>
Reactivity	Rat, Human, Mouse
Clonality	Monoclonal
Isotype	Rabbit IgG
Calculated MW	Predicted, 78 kDa , observed, 91 kDa
Gene Name	RANBP9
Aliases	RANBP9; RAN Binding Protein 9; RANBPM; Ran Binding Protein In The Microtubule Organizing Center; Ran-Binding Protein 9; Ran-Binding Protein M; RanBPM; RanBP7; BPM-L; BPM90; Novel Centrosomal Protein RanBPM; Ran Binding Protein, Centrosomal; RanBP9
Immunogen	A synthesized peptide derived from human RANBP9

**KD-Validated Anti-RAN binding protein 9 Rabbit Monoclonal Antibody - Additional Information**

Gene ID	10048
<b>Other Names</b>	Ran-binding protein 9, RanBP9, BPM-L, BPM90, Ran-binding protein M, RanBPM, RanBP7, RANBP9, RANBPM

**KD-Validated Anti-RAN binding protein 9 Rabbit Monoclonal Antibody - Protein Information****Name** RANBP9**Synonyms** RANBPM**Function**

May act as scaffolding protein, and as adapter protein to couple membrane receptors to intracellular signaling pathways (Probable). Acts as a mediator of cell spreading and actin cytoskeleton rearrangement (PubMed: [18710924](http://www.uniprot.org/citations/18710924)). Core component of the CTLH E3 ubiquitin-protein ligase complex that selectively accepts ubiquitin from UBE2H and mediates ubiquitination and subsequent proteasomal degradation of the transcription factor HBP1 (PubMed: [29911972](http://www.uniprot.org/citations/29911972)). May be involved in signaling of ITGB2/LFA-1 and other integrins (PubMed:

<http://www.uniprot.org/citations/14722085> target="\_blank">14722085</a>). Enhances HGF-MET signaling by recruiting Sos and activating the Ras pathway (PubMed:<a href="http://www.uniprot.org/citations/12147692" target="\_blank">12147692</a>). Enhances dihydrotestosterone-induced transactivation activity of AR, as well as dexamethasone-induced transactivation activity of NR3C1, but not affect estrogen-induced transactivation (PubMed:<a href="http://www.uniprot.org/citations/12361945" target="\_blank">12361945</a>, PubMed:<a href="http://www.uniprot.org/citations/18222118" target="\_blank">18222118</a>). Stabilizes TP73 isoform Alpha, probably by inhibiting its ubiquitination, and increases its proapoptotic activity (PubMed:<a href="http://www.uniprot.org/citations/15558019" target="\_blank">15558019</a>). Inhibits the kinase activity of DYRK1A and DYRK1B. Inhibits FMR1 binding to RNA.

### Cellular Location

Cytoplasm. Nucleus. Cell membrane; Peripheral membrane protein. Note=The unphosphorylated form is predominantly cytoplasmic. A phosphorylated form is associated with the plasma membrane.

### Tissue Location

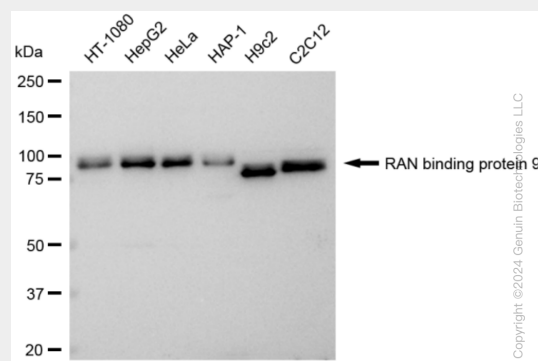
Ubiquitously expressed, with highest levels in testes, placenta, heart, and muscle, and lowest levels in lung. Within the brain, expressed predominantly by neurons in the gray matter of cortex, the granular layer of cerebellum and the Purkinje cells

## KD-Validated Anti-RAN binding protein 9 Rabbit Monoclonal Antibody - Protocols

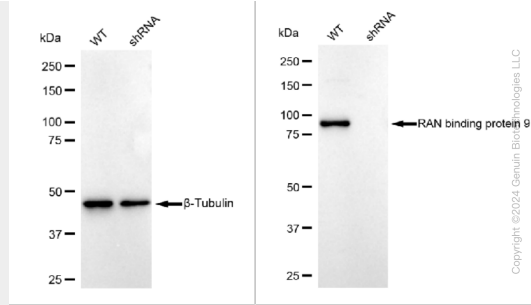
Provided below are standard protocols that you may find useful for product applications.

- [Western Blot](#)
- [Blocking Peptides](#)
- [Dot Blot](#)
- [Immunohistochemistry](#)
- [Immunofluorescence](#)
- [Immunoprecipitation](#)
- [Flow Cytometry](#)
- [Cell Culture](#)

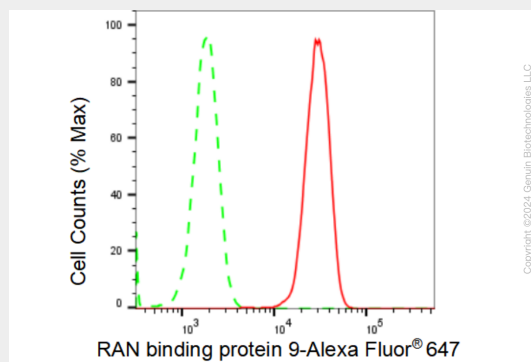
## KD-Validated Anti-RAN binding protein 9 Rabbit Monoclonal Antibody - Images



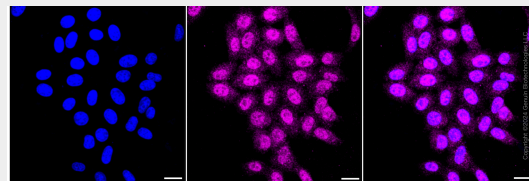
Western blotting analysis using anti-RAN binding protein 9 antibody (Cat#AGI1396). Total cell lysates (30 µg) from various cell lines were loaded and separated by SDS-PAGE. The blot was incubated with anti-RAN binding protein 9 antibody (Cat#AGI1396, 1:5,000) and HRP-conjugated goat anti-rabbit secondary antibody respectively.



Western blotting analysis using anti-RAN binding protein 9 antibody (Cat#AGI1396). RAN binding protein 9 expression in wild type (WT) and RAN binding protein 9 shRNA knockdown (KD) HeLa cells with 30  $\mu$ g of total cell lysates.  $\beta$ -Tubulin serves as a loading control. The blot was incubated with anti-RAN binding protein 9 antibody (Cat#AGI1396, 1:5,000) and HRP-conjugated goat anti-rabbit secondary antibody respectively.



Flow cytometric analysis of RAN binding protein 9 expression in HepG2 cells using RAN binding protein 9 antibody (Cat#AGI1396, 1:2,000). Green, isotype control; red, RAN binding protein 9.



Immunocytochemical staining of HepG2 cells with RAN binding protein 9 antibody (Cat#AGI1396, 1:1,000). Nuclei were stained blue with DAPI; RAN binding protein 9 was stained magenta with Alexa Fluor® 647. Images were taken using Leica stellaris 5. Protein abundance based on laser Intensity and smart gain: Medium. Scale bar: 20  $\mu$ m.