

KD-Validated Anti-RAS p21 protein activator 1 Rabbit Monoclonal Antibody
Rabbit monoclonal antibody
Catalog # AGI1397**Specification****KD-Validated Anti-RAS p21 protein activator 1 Rabbit Monoclonal Antibody - Product Information**

Application	WB
Primary Accession	P20936
Reactivity	Rat, Human, Mouse
Clonality	Monoclonal
Isotype	Rabbit IgG
Calculated MW	Predicted, 116 kDa, observed, 116 kDa
Gene Name	KDa
Aliases	RASA1 RASA1; RAS P21 Protein Activator 1; P120GAP; GAP; Ras GTPase-Activating Protein 1; P120RASGAP; CM-AVM; P120; RASA; RAS P21 Protein Activator (GTPase Activating Protein) 1; P120 RAS GTPase Activating Protein; Capillary Malformation-Arteriovenous Malformation; Triphosphatase-Activating Protein; GTPase-Activating Protein; Ras P21 Protein Activator; CMAVM1; RASGAP; RasGAP; CMAVM; PKWS
Immunogen	A synthesized peptide derived from human RASA1

KD-Validated Anti-RAS p21 protein activator 1 Rabbit Monoclonal Antibody - Additional Information

Gene ID	5921
Other Names	
Ras GTPase-activating protein 1, GAP, GTPase-activating protein, RasGAP, Ras p21 protein activator, p120GAP, RASA1, GAP, RASA	

KD-Validated Anti-RAS p21 protein activator 1 Rabbit Monoclonal Antibody - Protein Information**Name** RASA1**Synonyms** GAP, RASA**Function**

Inhibitory regulator of the Ras-cyclic AMP pathway. Stimulates the GTPase of normal but not oncogenic Ras p21; this stimulation may be further increased in the presence of NCK1.

Cellular Location

Cytoplasm.

Tissue Location

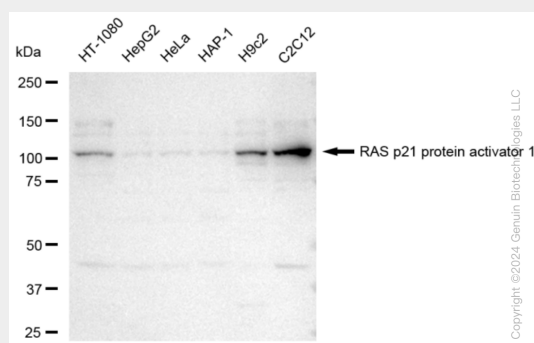
In placental villi, detected only in the trophoblast layer (cytotrophoblast and syncytiotrophoblast).
Not detected in stromal, endothelial or Hofbauer cells (at protein level)

KD-Validated Anti-RAS p21 protein activator 1 Rabbit Monoclonal Antibody - Protocols

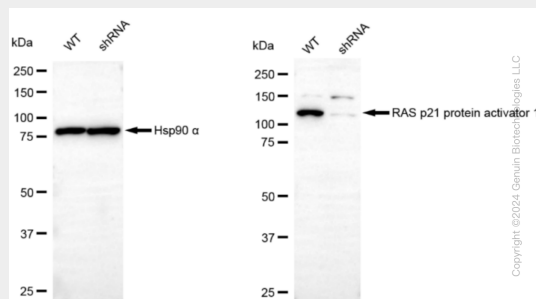
Provided below are standard protocols that you may find useful for product applications.

- [Western Blot](#)
- [Blocking Peptides](#)
- [Dot Blot](#)
- [Immunohistochemistry](#)
- [Immunofluorescence](#)
- [Immunoprecipitation](#)
- [Flow Cytometry](#)
- [Cell Culture](#)

KD-Validated Anti-RAS p21 protein activator 1 Rabbit Monoclonal Antibody - Images



Western blotting analysis using anti-RAS p21 protein activator 1 antibody (Cat#AGI1397). Total cell lysates (30 µg) from various cell lines were loaded and separated by SDS-PAGE. The blot was incubated with anti-RAS p21 protein activator 1 antibody (Cat#AGI1397, 1:5,000) and HRP-conjugated goat anti-rabbit secondary antibody respectively.



Western blotting analysis using anti-RAS p21 protein activator 1 antibody (Cat#AGI1397). RAS p21 protein activator 1 expression in wild type (WT) and RAS p21 protein activator 1 shRNA knockdown (KD) HT-1080 cells with 30 µg of total cell lysates. β-Tubulin serves as a loading control. The blot was incubated with anti-RAS p21 protein activator 1 antibody (Cat#AGI1397, 1:5,000) and HRP-conjugated goat anti-rabbit secondary antibody respectively.