

KD-Validated Anti-SPINK5 Rabbit Monoclonal Antibody
Rabbit monoclonal antibody
Catalog # AGI1407**Specification****KD-Validated Anti-SPINK5 Rabbit Monoclonal Antibody - Product Information**

Application	WB, ICC
Primary Accession	O9NQ38
Reactivity	Rat, Human, Mouse
Clonality	Monoclonal
Isotype	Rabbit IgG
Calculated MW	Predicted, 121 kDa , observed, 121 kDa kDa
Gene Name	SPINK5
Aliases	SPINK5; Serine Peptidase Inhibitor Kazal Type 5; LEKTI; VAKTI; LETKI; NETS; NS; Lympho-Epithelial Kazal-Type-Related Inhibitor; Lymphoepithelial Kazal-Type-Related Inhibitor; Serine Protease Inhibitor Kazal-Type 5; FLJ21544; FLJ97536; FLJ97596 ; FLJ99794; Serine Protease Inhibitor, Kazal Type 5; DKFZp686K19184; DKFZP686K19184
Immunogen	A synthesized peptide derived from human SPINK5 / LEKTI

KD-Validated Anti-SPINK5 Rabbit Monoclonal Antibody - Additional Information

Gene ID	11005
Other Names	
Serine protease inhibitor Kazal-type 5, Lympho-epithelial Kazal-type-related inhibitor, LEKTI, Hemofiltrate peptide HF6478, Hemofiltrate peptide HF7665, SPINK5	

KD-Validated Anti-SPINK5 Rabbit Monoclonal Antibody - Protein Information**Name** SPINK5**Function**

Serine protease inhibitor, probably important for the anti- inflammatory and/or antimicrobial protection of mucous epithelia. Contribute to the integrity and protective barrier function of the skin by regulating the activity of defense-activating and desquamation- involved proteases. Inhibits KLK5, it's major target, in a pH-dependent manner. Inhibits KLK7, KLK14 CASP14, and trypsin.

Cellular Location

Secreted.

Tissue Location

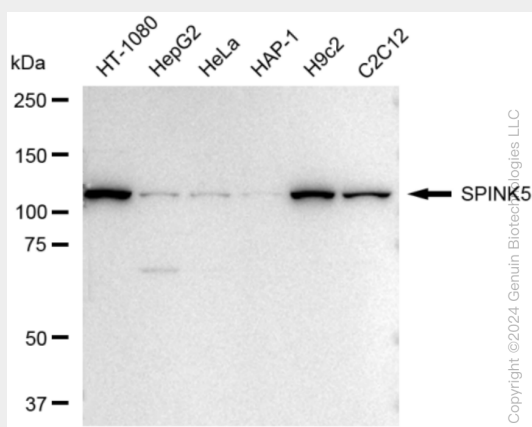
Highly expressed in the thymus and stratum corneum. Also found in the oral mucosa, parathyroid gland, Bartholin's glands, tonsils, and vaginal epithelium. Very low levels are detected in lung, kidney, and prostate.

KD-Validated Anti-SPINK5 Rabbit Monoclonal Antibody - Protocols

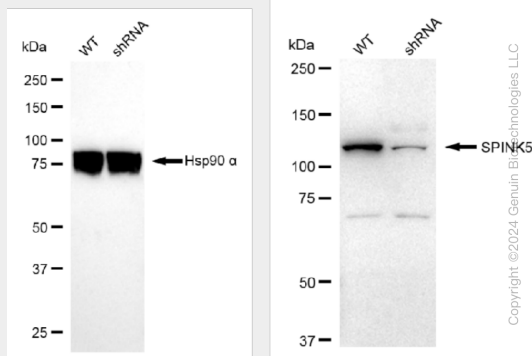
Provided below are standard protocols that you may find useful for product applications.

- [Western Blot](#)
- [Blocking Peptides](#)
- [Dot Blot](#)
- [Immunohistochemistry](#)
- [Immunofluorescence](#)
- [Immunoprecipitation](#)
- [Flow Cytometry](#)
- [Cell Culture](#)

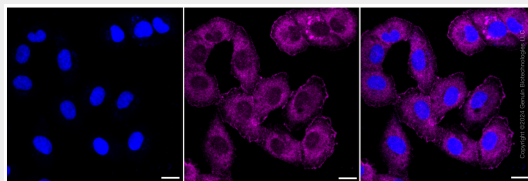
KD-Validated Anti-SPINK5 Rabbit Monoclonal Antibody - Images



Western blotting analysis using anti-SPINK5 antibody (Cat#AGI1407). Total cell lysates (30 µg) from various cell lines were loaded and separated by SDS-PAGE. The blot was incubated with anti-SPINK5 antibody (Cat#AGI1407, 1:5,000) and HRP-conjugated goat anti-rabbit secondary antibody respectively.



Western blotting analysis using anti-SPINK5 antibody (Cat#AGI1407). SPINK5 expression in wild type (WT) and SPINK5 shRNA knockdown (KD) HeLa cells with 30 µg of total cell lysates. β-Tubulin serves as a loading control. The blot was incubated with anti-SPINK5 antibody (Cat#AGI1407, 1:5,000) and HRP-conjugated goat anti-rabbit secondary antibody respectively.



Immunocytochemical staining of HT-1080 cells with SPINK5 antibody (Cat#AGI1407, 1:1,000). Nuclei were stained blue with DAPI; SPINK5 was stained magenta with Alexa Fluor® 647. Images were taken using Leica stellaris 5. Protein abundance based on laser Intensity and smart gain: Medium. Scale bar: 20 μ m.