

KD-Validated Anti-Geminin DNA Replication Inhibitor Rabbit Monoclonal Antibody
Rabbit monoclonal antibody
Catalog # AGI1421**Specification****KD-Validated Anti-Geminin DNA Replication Inhibitor Rabbit Monoclonal Antibody - Product Information**

Application	WB, ICC
Primary Accession	O75496
Reactivity	Rat, Human, Mouse
Clonality	Monoclonal
Isotype	Rabbit IgG
Calculated MW	Predicted, 24 kDa; observed, 26 kDa kDa
Gene Name	GMNN
Aliases	GMNN; Geminin DNA Replication Inhibitor; Gem; Geminin; MGORS6
Immunogen	Recombinant protein of human Geminin

KD-Validated Anti-Geminin DNA Replication Inhibitor Rabbit Monoclonal Antibody - Additional Information

Gene ID	51053
Other Names	
Geminin, GMNN	

KD-Validated Anti-Geminin DNA Replication Inhibitor Rabbit Monoclonal Antibody - Protein Information**Name** GMNN**Function**

Inhibits DNA replication by preventing the incorporation of MCM complex into pre-replication complex (pre-RC) (PubMed: [14993212](http://www.uniprot.org/citations/14993212), PubMed: [20129055](http://www.uniprot.org/citations/20129055), PubMed: [24064211](http://www.uniprot.org/citations/24064211), PubMed: [9635433](http://www.uniprot.org/citations/9635433)). It is degraded during the mitotic phase of the cell cycle (PubMed: [14993212](http://www.uniprot.org/citations/14993212), PubMed: [24064211](http://www.uniprot.org/citations/24064211), PubMed: [9635433](http://www.uniprot.org/citations/9635433)). Its destruction at the metaphase- anaphase transition permits replication in the succeeding cell cycle (PubMed: [14993212](http://www.uniprot.org/citations/14993212), PubMed: [24064211](http://www.uniprot.org/citations/24064211), PubMed: [9635433](http://www.uniprot.org/citations/9635433)). Inhibits histone acetyltransferase activity of KAT7/HBO1 in a CDT1-dependent manner, inhibiting histone H4 acetylation and DNA replication licensing (PubMed: [20129055](http://www.uniprot.org/citations/20129055)). Inhibits the transcriptional activity of a subset of Hox proteins, enrolling them in cell proliferative control

(PubMed:22615398).

Cellular Location

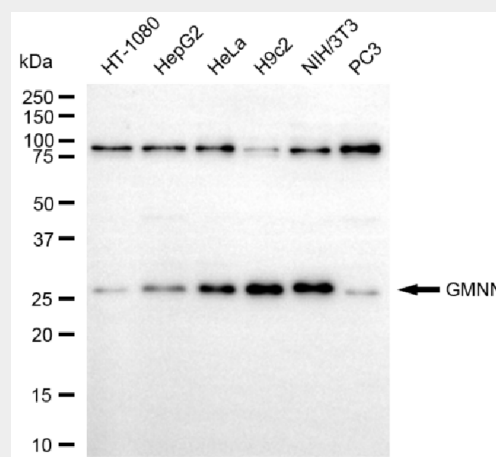
Cytoplasm. Nucleus. Note=Mainly cytoplasmic but can be relocalized to the nucleus.

KD-Validated Anti-Geminin DNA Replication Inhibitor Rabbit Monoclonal Antibody - Protocols

Provided below are standard protocols that you may find useful for product applications.

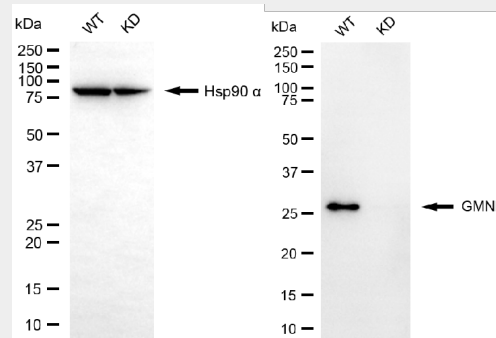
- [Western Blot](#)
- [Blocking Peptides](#)
- [Dot Blot](#)
- [Immunohistochemistry](#)
- [Immunofluorescence](#)
- [Immunoprecipitation](#)
- [Flow Cytometry](#)
- [Cell Culture](#)

KD-Validated Anti-Geminin DNA Replication Inhibitor Rabbit Monoclonal Antibody - Images



Copyright ©2025 Genuin Biotechnologies LLC

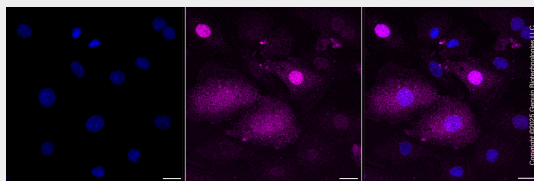
Western blotting analysis using anti-GMNN antibody (Cat#AGI1421). Total cell lysates (30 µg) from various cell lines were loaded and separated by SDS-PAGE. The blot was incubated with anti-GMNN antibody (Cat#AGI1421, 1:5,000) and HRP-conjugated goat anti-rabbit secondary antibody respectively.



Copyright ©2025 Genuin Biotechnologies LLC

Western blotting analysis using anti-GMNN antibody (Cat#AGI1421). GMNN expression in

wild-type (WT) and GMNN knockdown (KD) HSHC cells with 30 µg of total cell lysates. Hsp90 α serves as a loading control. The blot was incubated with anti-GMNN antibody (Cat#AGI1421, 1:5,000) and HRP-conjugated goat anti-rabbit secondary antibody respectively.



Immunocytochemical staining of H9C2 cells with anti-GMNN antibody (Cat#AGI1421, 1:1,000). Nuclei were stained blue with DAPI; GMNN was stained magenta with Alexa Fluor® 647. Images were taken using Leica stellaris 5. Protein abundance based on laser Intensity and smart gain□Low. Scale bar, 20 µm.