

**KD-Validated Anti-EWS RNA Binding Protein 1 Rabbit Monoclonal Antibody**  
**Rabbit monoclonal antibody**  
**Catalog # AGI1426****Specification****KD-Validated Anti-EWS RNA Binding Protein 1 Rabbit Monoclonal Antibody - Product Information**

Application	WB, FC
Primary Accession	<a href="#">Q01844</a>
Reactivity	Rat, Human, Mouse
Clonality	Monoclonal
Isotype	Rabbit IgG
Calculated MW	Predicted, 68 kDa; observed, 85 kDa KDa
Gene Name	EWSR1
Aliases	EWSR1; EWS RNA Binding Protein 1; EWS; Ewing Sarcoma Breakpoint Region 1; RNA-Binding Protein EWS; Ewings Sarcoma EWS-Flt1 (Type 1) Oncogene; Ewing Sarcoma Breakpoint Region 1 Protein; EWS Oncogene; BK984G1.4; EWS-FLI1
Immunogen	A synthesized peptide derived from human EWSR1

**KD-Validated Anti-EWS RNA Binding Protein 1 Rabbit Monoclonal Antibody - Additional Information**

Gene ID	2130
<b>Other Names</b>	
RNA-binding protein EWS, EWS oncogene, Ewing sarcoma breakpoint region 1 protein, EWSR1, EWS	

**KD-Validated Anti-EWS RNA Binding Protein 1 Rabbit Monoclonal Antibody - Protein Information****Name** EWSR1**Synonyms** EWS**Function**

Binds to ssRNA containing the consensus sequence 5'-AGGUAA-3' (PubMed:<a href="http://www.uniprot.org/citations/21256132" target="\_blank">21256132</a>). Might normally function as a transcriptional repressor (PubMed:<a href="http://www.uniprot.org/citations/10767297" target="\_blank">10767297</a>). EWS-fusion-proteins (EFPS) may play a role in the tumorigenic process. They may disturb gene expression by mimicking, or interfering with the normal function of CTD-POLII within the transcription initiation complex. They may also contribute to an aberrant activation of the fusion protein target genes.

### Cellular Location

Nucleus. Cytoplasm. Cell membrane. Note=Relocates from cytoplasm to ribosomes upon PTK2B/FAK2 activation

### Tissue Location

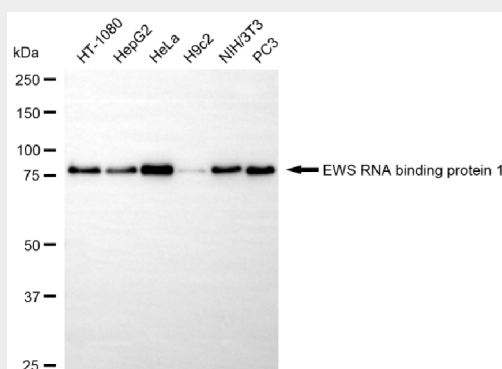
Ubiquitous.

## KD-Validated Anti-EWS RNA Binding Protein 1 Rabbit Monoclonal Antibody - Protocols

Provided below are standard protocols that you may find useful for product applications.

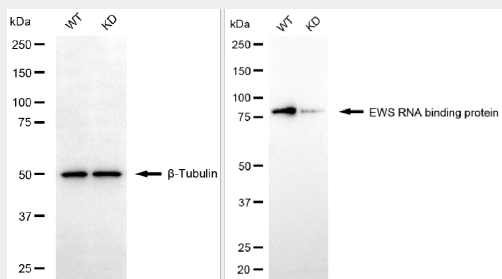
- [Western Blot](#)
- [Blocking Peptides](#)
- [Dot Blot](#)
- [Immunohistochemistry](#)
- [Immunofluorescence](#)
- [Immunoprecipitation](#)
- [Flow Cytometry](#)
- [Cell Culture](#)

## KD-Validated Anti-EWS RNA Binding Protein 1 Rabbit Monoclonal Antibody - Images



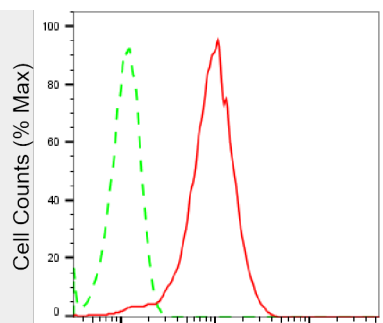
Copyright ©2025 Genulin Biotechnologies LLC

Western blotting analysis using anti-EWS RNA binding protein 1 antibody (Cat#AGI1426). Total cell lysates (30 µg) from various cell lines were loaded and separated by SDS-PAGE. The blot was incubated with anti-EWS RNA binding protein 1 antibody (Cat#AGI1426, 1:5,000) and HRP-conjugated goat anti-rabbit secondary antibody respectively.



Copyright ©2025 Genulin Biotechnologies LLC

Western blotting analysis using anti-EWS RNA binding protein 1 antibody (Cat#AGI1426). EWS RNA binding protein 1 expression in wild-type (WT) and EWS RNA binding protein 1 (EWSR1) knockdown (KD) 293T cells with 20 µg of total cell lysates. β-Tubulin serves as a loading control. The blot was incubated with anti-EWS RNA binding protein 1 antibody (Cat#AGI1426, 1:5,000) and HRP-conjugated goat anti-rabbit secondary antibody respectively.



Copyright ©2025 Genuin Biotechnologies LLC

EWS RNA binding protein 1-Alexa Fluor® 647

Flow cytometric analysis of EWS RNA binding protein 1 expression in HepG2 cells using anti-EWS RNA binding protein 1 antibody (Cat#AGI1426, 1:2,000). Green, isotype control; red, EWS RNA binding protein 1.