

KD-Validated Anti-Thymidine Kinase 1 Rabbit Monoclonal Antibody
Rabbit monoclonal antibody
Catalog # AGI1431**Specification****KD-Validated Anti-Thymidine Kinase 1 Rabbit Monoclonal Antibody - Product Information**

Application	WB, FC, ICC
Primary Accession	P04183
Reactivity	Human
Clonality	Monoclonal
Isotype	Rabbit IgG
Calculated MW	Predicted, 25 kDa; observed, 25 kDa kDa
Gene Name	TK1
Aliases	TK1; Thymidine Kinase 1; Thymidine Kinase, Cytosolic; Cytosolic Thymidine Kinase; EC 2.7.1.21; Epididymis Secretory Sperm Binding Protein; Thymidine Kinase 1, Soluble; TK2
Immunogen	A synthesized peptide derived from human Thymidine Kinase 1

KD-Validated Anti-Thymidine Kinase 1 Rabbit Monoclonal Antibody - Additional Information

Gene ID	7083
Other Names	
Thymidine kinase, cytosolic, 2.7.1.21, TK1 (http://www.genenames.org/cgi-bin/gene_symbol_report?hgnc_id=11830)	

KD-Validated Anti-Thymidine Kinase 1 Rabbit Monoclonal Antibody - Protein Information**Name** TK1 ([HGNC:11830](#))**Function**

Cell-cycle-regulated enzyme of importance in nucleotide metabolism (PubMed:[9575153](http://www.uniprot.org/citations/9575153)). Catalyzes the first enzymatic step in the salvage pathway converting thymidine into thymidine monophosphate (PubMed:[22385435](http://www.uniprot.org/citations/22385435)). Transcriptional regulation limits expression to the S phase of the cell cycle and transient expression coincides with the oscillation in the intracellular dTTP concentration (Probable). Also important for the activation of anticancer and antiviral nucleoside analog prodrugs such as 1-b-d-arabinofuranosylcytosine (AraC) and 3c- azido-3c-deoxythymidine (AZT) (PubMed:[22385435](http://www.uniprot.org/citations/22385435)).

Cellular Location

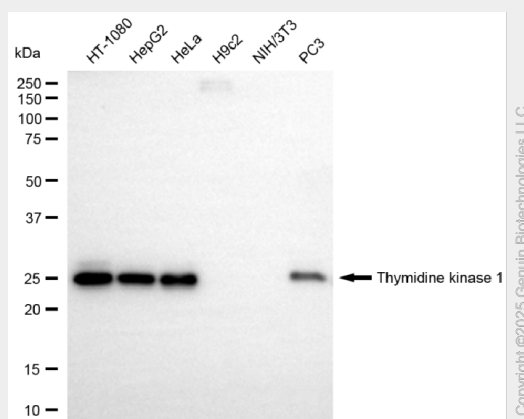
Cytoplasm.

KD-Validated Anti-Thymidine Kinase 1 Rabbit Monoclonal Antibody - Protocols

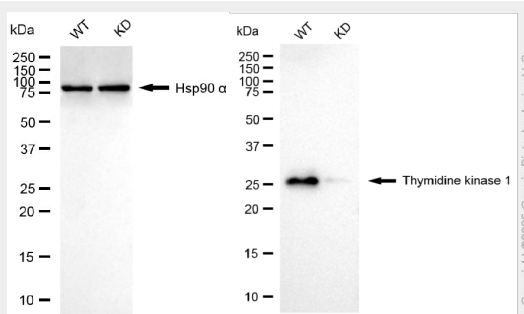
Provided below are standard protocols that you may find useful for product applications.

- [Western Blot](#)
- [Blocking Peptides](#)
- [Dot Blot](#)
- [Immunohistochemistry](#)
- [Immunofluorescence](#)
- [Immunoprecipitation](#)
- [Flow Cytometry](#)
- [Cell Culture](#)

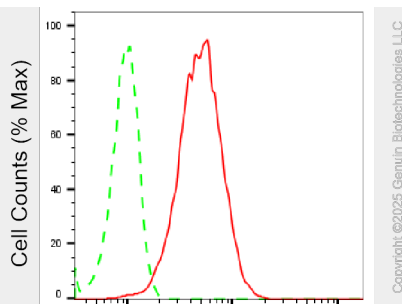
KD-Validated Anti-Thymidine Kinase 1 Rabbit Monoclonal Antibody - Images



Western blotting analysis using anti-thymidine kinase 1 antibody (Cat#AGI1431). Total cell lysates (30 µg) from various cell lines were loaded and separated by SDS-PAGE. The blot was incubated with anti-thymidine kinase 1 antibody (Cat#AGI1431, 1:20,000) and HRP-conjugated goat anti-rabbit secondary antibody respectively.



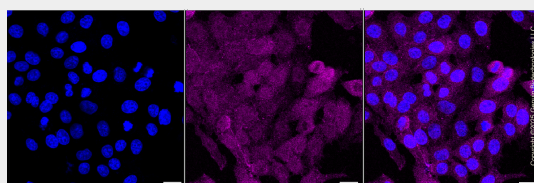
Western blotting analysis using anti-thymidine kinase 1 antibody (Cat#AGI1431). Thymidine kinase 1 expression in wild type (WT) and thymidine kinase 1 (TK1) knockdown (KD) HSHC cells with 20 µg of total cell lysates. Hsp90 α serves as a loading control. The blot was incubated with anti-thymidine kinase 1 antibody (Cat#AGI1431, 1:5,000) and HRP-conjugated goat anti-rabbit secondary antibody respectively.



Copyright ©2025 Genuin Biotechnologies LLC

Thymidine kinase 1-Alexa Fluor® 647

Flow cytometric analysis of Thymidine kinase 1 expression in HepG2 cells using anti-Thymidine kinase 1 antibody (Cat#AGI1431, 1:2,000). Green, isotype control; red, Thymidine kinase 1.



Immunocytochemical staining of HepG2 cells with anti-Thymidine kinase 1 antibody (Cat#AGI1431, 1:1,000). Nuclei were stained blue with DAPI; Thymidine kinase 1 was stained magenta with Alexa Fluor® 647. Images were taken using Leica stellaris 5. Protein abundance based on laser Intensity and smart gain: Medium. Scale bar, 20 µm.