

**KD-Validated Anti-Cystatin C Rabbit Monoclonal Antibody**  
**Rabbit monoclonal antibody**  
**Catalog # AGI1440****Specification**

---

**KD-Validated Anti-Cystatin C Rabbit Monoclonal Antibody - Product Information**

Application	WB, ICC
Primary Accession	<a href="#">P01034</a>
Reactivity	Human, Mouse
Clonality	Monoclonal
Isotype	Rabbit IgG
Calculated MW	Predicted, 16 kDa , observed, 14 kDa
Gene Name	KDa
Aliases	CST3
	CST3; Cystatin C; Neuroendocrine Basic Polypeptide; Post-Gamma-Globulin; Gamma-Trace; Cystatin-C; Cystatin C (Amyloid Angiopathy And Cerebral Hemorrhage); Epididymis Secretory Protein Li; BA218C14.4 (Cystatin C); Cystatin 3; Cystatin-3; HEL-S-2 3; ARMD11
Immunogen	A synthesized peptide derived from human Cystatin C

**KD-Validated Anti-Cystatin C Rabbit Monoclonal Antibody - Additional Information**

Gene ID	1471
<b>Other Names</b>	
Cystatin-C, Cystatin-3, Gamma-trace, Neuroendocrine basic polypeptide, Post-gamma-globulin, CST3	

**KD-Validated Anti-Cystatin C Rabbit Monoclonal Antibody - Protein Information****Name** CST3**Function**

As an inhibitor of cysteine proteinases, this protein is thought to serve an important physiological role as a local regulator of this enzyme activity.

**Cellular Location**

Secreted.

**Tissue Location**

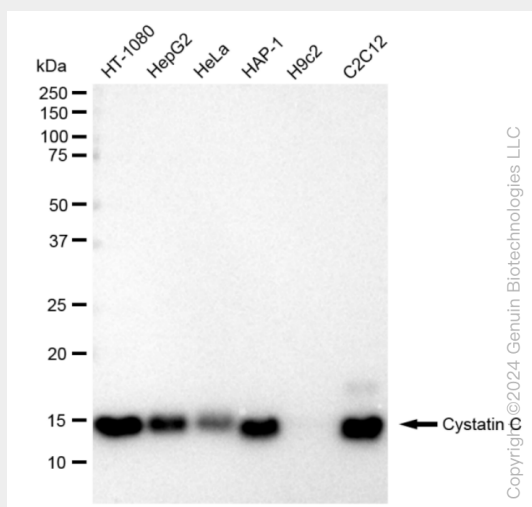
Expressed in submandibular and sublingual saliva but not in parotid saliva (at protein level). Expressed in various body fluids, such as the cerebrospinal fluid and plasma. Expressed in highest levels in the epididymis, vas deferens, brain, thymus, and ovary and the lowest in the submandibular gland

## KD-Validated Anti-Cystatin C Rabbit Monoclonal Antibody - Protocols

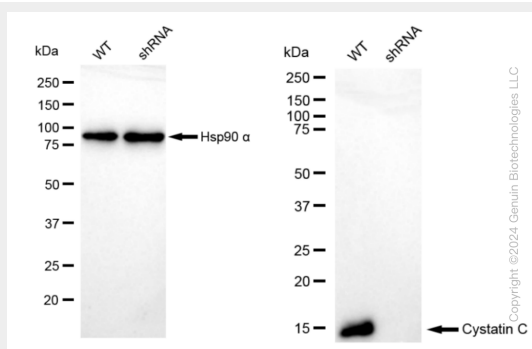
Provided below are standard protocols that you may find useful for product applications.

- [Western Blot](#)
- [Blocking Peptides](#)
- [Dot Blot](#)
- [Immunohistochemistry](#)
- [Immunofluorescence](#)
- [Immunoprecipitation](#)
- [Flow Cytometry](#)
- [Cell Culture](#)

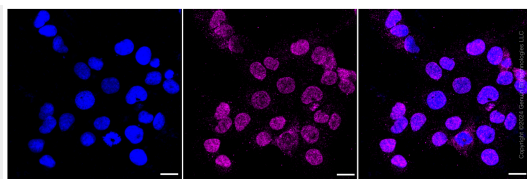
## KD-Validated Anti-Cystatin C Rabbit Monoclonal Antibody - Images



Western blotting analysis using anti-Cystatin C antibody (Cat#AGI1440). Total cell lysates (30  $\mu$ g) from various cell lines were loaded and separated by SDS-PAGE. The blot was incubated with anti-Cystatin C antibody (Cat#AGI1440, 1:5,000) and HRP-conjugated goat anti-rabbit secondary antibody respectively.



Western blotting analysis using anti-Cystatin C antibody (Cat#AGI1440). Cystatin C expression in wild type (WT) and cystatin C shRNA knockdown (KD) HeLa cells with 30  $\mu$ g of total cell lysates.  $\beta$ -Tubulin serves as a loading control. The blot was incubated with anti-Cystatin C antibody (Cat#AGI1440, 1:5,000) and HRP-conjugated goat anti-rabbit secondary antibody respectively.



Immunocytochemical staining of HT-1080 cells with Cystatin C antibody (Cat#AGI1440, 1:1,000). Nuclei were stained blue with DAPI; Cystatin C was stained magenta with Alexa Fluor® 647. Images were taken using Leica stellaris 5. Protein abundance based on laser Intensity and smart gain: Medium. Scale bar: 20  $\mu$ m.