

**KD-Validated Anti-Histone H3 (acetyl K27) Rabbit Monoclonal Antibody**  
**Rabbit monoclonal antibody**  
**Catalog # AGI1445****Specification****KD-Validated Anti-Histone H3 (acetyl K27) Rabbit Monoclonal Antibody - Product Information**

Application	WB, FC, ICC
Primary Accession	<a href="#">P68431/ P84243/Q16695/ Q6NXT2/ Q71DI3</a>
Reactivity	Rat, Human, Mouse
Clonality	Monoclonal
Isotype	Rabbit IgG
Calculated MW	Predicted, 15 kDa ; Observed, 17 kDa KDa
Gene Name	H3C1
Aliases	H3C1; H3 Clustered Histone 1; HIST1H3A; H3/A; H3FA; Histone Cluster 1 H3 Family Member A; H3 Histone Family, Member A; Histone Cluster 1, H3a; Histone 1, H3a; Histone H3.1; Histone H3/A; H3FC HIST1H3C; Histone H3/B; Histone H3/C; Histone H3/D; Histone H3/F; Histone H3/H; Histone H3/I; Histone; H3/J; Histone H3/K; Histone H3/L; HIST1H3B; HIST1H3D; HIST1H3E; HIST1H3F; HIST1H3G; HIST1H3H; HIST1H3I; HIST1H3J; H3C10; H3C11; H3C12; H3C2; H3C3; H3C4; H3C6; H3C7; H3C8; H3FL; H3FB; H3FD; H3FI; H3FH; H3FK; H3FF; H3FJ
Immunogen	A synthesized peptide derived from Histone H3 (acetyl K27)

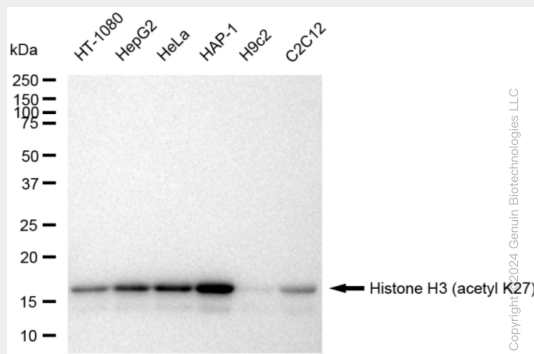
**KD-Validated Anti-Histone H3 (acetyl K27) Rabbit Monoclonal Antibody - Additional Information****KD-Validated Anti-Histone H3 (acetyl K27) Rabbit Monoclonal Antibody - Protein Information****KD-Validated Anti-Histone H3 (acetyl K27) Rabbit Monoclonal Antibody - Protocols**

Provided below are standard protocols that you may find useful for product applications.

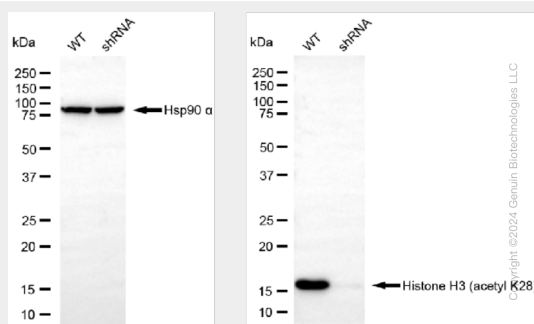
- [Western Blot](#)
- [Blocking Peptides](#)
- [Dot Blot](#)
- [Immunohistochemistry](#)
- [Immunofluorescence](#)

- [Immunoprecipitation](#)
- [Flow Cytometry](#)
- [Cell Culture](#)

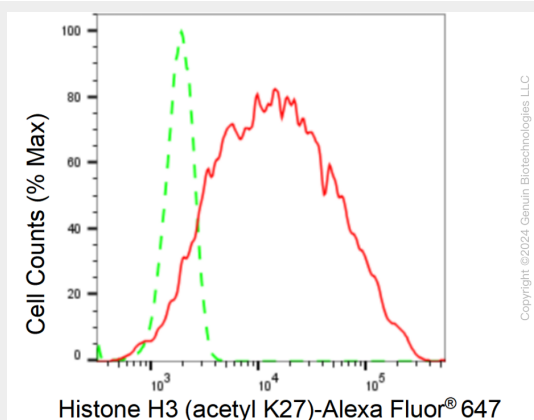
## KD-Validated Anti-Histone H3 (acetyl K27) Rabbit Monoclonal Antibody - Images



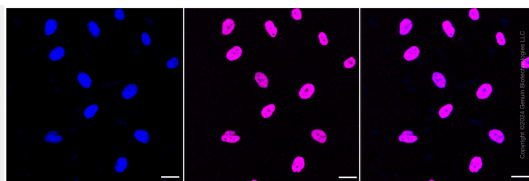
Western blotting analysis using anti-Histone H3 (acetyl K27) antibody (Cat#AGI1445). Total cell lysates (5 µg) from various cell lines were loaded and separated by SDS-PAGE. The blot was incubated with anti-Histone H3 (acetyl K27) antibody (Cat#AGI1445, 1:5,000) and HRP-conjugated goat anti-rabbit secondary antibody respectively.



Western blotting analysis using anti-Histone H3 (acetyl K27) antibody (Cat#AGI1445). Histone H3 (acetyl K27) expression in wild type (WT) and Histone H3 (acetyl K27) shRNA knockdown (KD) HeLa cells with 30 µg of total cell lysates. Hsp90 α serves as a loading control. The blot was incubated with anti-Histone H3 (acetyl K27) antibody (Cat#AGI1445, 1:5,000) and HRP-conjugated goat anti-rabbit secondary antibody respectively.



Flow cytometric analysis of Histone H3 (acetyl K27) expression in HeLa cells using Histone H3 (acetyl K27) antibody (Cat#AGI1445, 1:2,000). Green, isotype control; red, Histone H3 (acetyl K27).



Immunocytochemical staining of HeLa cells with Histone H3 (acetyl K27) antibody (Cat#AGI1445, 1:1,000). Nuclei were stained blue with DAPI; Histone H3 (acetyl K27) was stained magenta with Alexa Fluor® 647. Images were taken using Leica stellaris 5. Protein abundance based on laser Intensity and smart gain: Medium. Scale bar: 20  $\mu$ m.