

**KD-Validated Anti-HAUS7 Rabbit Monoclonal Antibody**  
**Rabbit monoclonal antibody**  
**Catalog # AGI1446****Specification****KD-Validated Anti-HAUS7 Rabbit Monoclonal Antibody - Product Information**

Application	WB, FC, ICC
Primary Accession	<a href="#">Q99871</a>
Reactivity	Human
Clonality	Monoclonal
Isotype	Rabbit IgG
Calculated MW	Predicted, 40 kDa , observed, 37 kDa KDa
Gene Name	HAUS7
Aliases	HAUS7; HAUS Augmin Like Complex Subunit 7; UIP1; UCHL5IP; 26S Proteasome-Associated UCH37-Interacting Protein 1; HAUS Augmin-Like Complex Subunit 7; X-Linked Protein STS1769; 26S Proteasome-Associated UCH Interacting Protein 1; UCH37 Interacting Protein 1; UCHL5 Interacting Protein; UCHL5-Interacting Protein
Immunogen	A synthesized peptide derived from human UCHL5IP

**KD-Validated Anti-HAUS7 Rabbit Monoclonal Antibody - Additional Information**

Gene ID	55559
<b>Other Names</b>	
HAUS augmin-like complex subunit 7, 26S proteasome-associated UCH37-interacting protein 1, UCHL5-interacting protein, X-linked protein STS1769, HAUS7, UCHL5IP, UIP1	

**KD-Validated Anti-HAUS7 Rabbit Monoclonal Antibody - Protein Information****Name** HAUS7**Synonyms** UCHL5IP, UIP1**Function**

Contributes to mitotic spindle assembly, maintenance of centrosome integrity and completion of cytokinesis as part of the HAUS augmin-like complex.

**Cellular Location**

Cytoplasm, cytoskeleton, microtubule organizing center, centrosome. Cytoplasm, cytoskeleton, spindle. Note=Localizes to interphase centrosomes and to mitotic spindle microtubules.

**Tissue Location**

Detected in spleen, thymus, testis, ovary, small intestine and colon, with highest levels of

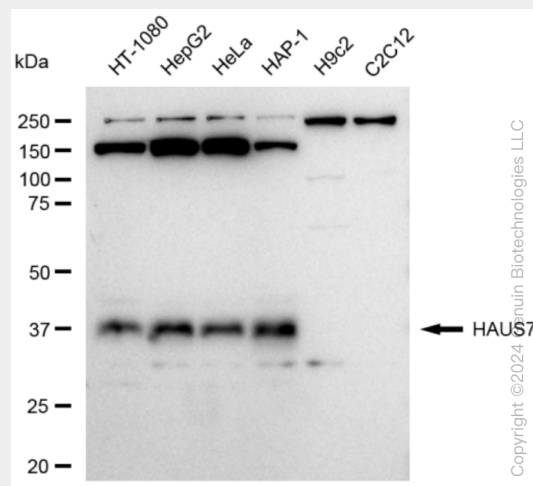
expression in testis and ovary.

## KD-Validated Anti-HAUS7 Rabbit Monoclonal Antibody - Protocols

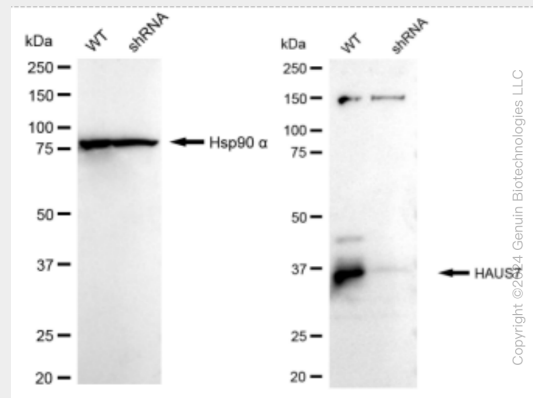
Provided below are standard protocols that you may find useful for product applications.

- [Western Blot](#)
- [Blocking Peptides](#)
- [Dot Blot](#)
- [Immunohistochemistry](#)
- [Immunofluorescence](#)
- [Immunoprecipitation](#)
- [Flow Cytometry](#)
- [Cell Culture](#)

## KD-Validated Anti-HAUS7 Rabbit Monoclonal Antibody - Images

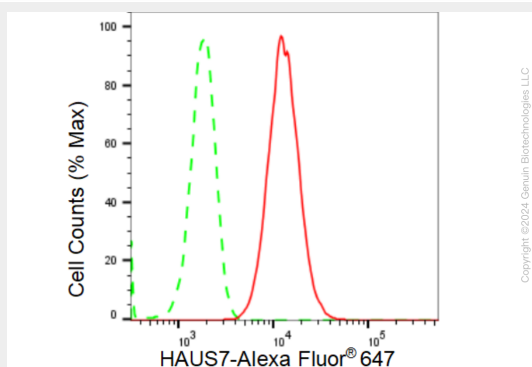


Western blotting analysis using anti-HAUS7 antibody (Cat#AGI1446). Total cell lysates (30 µg) from various cell lines were loaded and separated by SDS-PAGE. The blot was incubated with anti-HAUS7 antibody (Cat#AGI1446, 1:5,000) and HRP-conjugated goat anti-rabbit secondary antibody respectively.

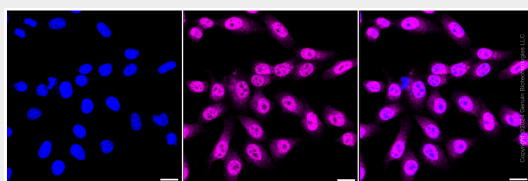


Western blotting analysis using anti-HAUS7 antibody (Cat#AGI1446). HAUS7 expression in wild type (WT) and HAUS7 shRNA knockdown (KD) HeLa cells with 30 µg of total cell lysates. Hsp90 α serves as a loading control. The blot was incubated with anti-HAUS7 antibody (Cat#AGI1446,

1:5,000) and HRP-conjugated goat anti-rabbit secondary antibody respectively.



Flow cytometric analysis of HAUS7 expression in HepG2 cells using HAUS7 antibody (Cat#AGI1446, 1:2,000). Green, isotype control; red, HAUS7.



Immunocytochemical staining of HepG2 cells with HAUS7 antibody (Cat#AGI1446, 1:1,000). Nuclei were stained blue with DAPI; HAUS was stained magenta with Alexa Fluor® 647. Images were taken using Leica stellaris 5. Protein abundance based on laser Intensity and smart gain: Medium. Scale bar: 20 µm.