

KD-Validated Anti-AGPS Rabbit Monoclonal Antibody
Rabbit monoclonal antibody
Catalog # AGI1458**Specification****KD-Validated Anti-AGPS Rabbit Monoclonal Antibody - Product Information**

Application	WB, FC, ICC
Primary Accession	O00116
Reactivity	Human
Clonality	Monoclonal
Isotype	Rabbit IgG
Calculated MW	Predicted, 73 kDa; observed, 73 kDa
Gene Name	KDa AGPS
Aliases	AGPS; Alkylglycerone Phosphate Synthase; ALDHPSY; ADHAPS; ADAP-S; ADAS; ADPS; Alkyl-dihydroxyacetonephosphate Synthase, Peroxisomal; Aging-Associated Gene 5 Protein; Alkyl-DHAP Synthase; EC 2.5.1.26; Alkylglycerone-Phosphate Synthase; Aging-Associated Protein 5; RCDP3
Immunogen	Recombinant protein of human Alkyl-DHAP synthase

KD-Validated Anti-AGPS Rabbit Monoclonal Antibody - Additional Information

Gene ID	8540
Other Names	Alkyl-dihydroxyacetonephosphate synthase, peroxisomal, Alkyl-DHAP synthase, 2.5.1.26, Aging-associated gene 5 protein, Alkylglycerone-phosphate synthase, AGPS

KD-Validated Anti-AGPS Rabbit Monoclonal Antibody - Protein Information**Name** AGPS**Function**

Catalyzes the exchange of the acyl chain in acyl- dihydroxyacetonephosphate (acyl-DHAP) for a long chain fatty alcohol, yielding the first ether linked intermediate, i.e. alkyl-dihydroxyacetonephosphate (alkyl-DHAP), in the pathway of ether lipid biosynthesis.

Cellular Location

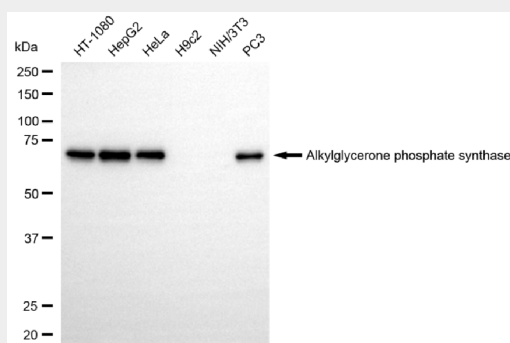
Peroxisome membrane {ECO:0000250|UniProtKB:P97275}. Peroxisome {ECO:0000250|UniProtKB:P97275}

KD-Validated Anti-AGPS Rabbit Monoclonal Antibody - Protocols

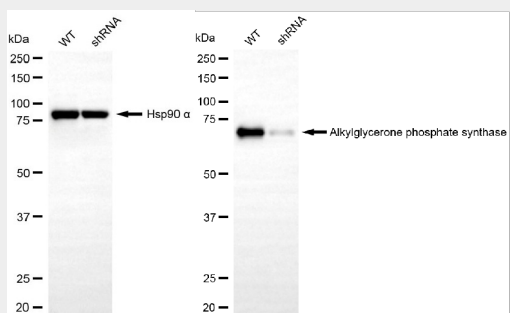
Provided below are standard protocols that you may find useful for product applications.

- [Western Blot](#)
- [Blocking Peptides](#)
- [Dot Blot](#)
- [Immunohistochemistry](#)
- [Immunofluorescence](#)
- [Immunoprecipitation](#)
- [Flow Cytometry](#)
- [Cell Culture](#)

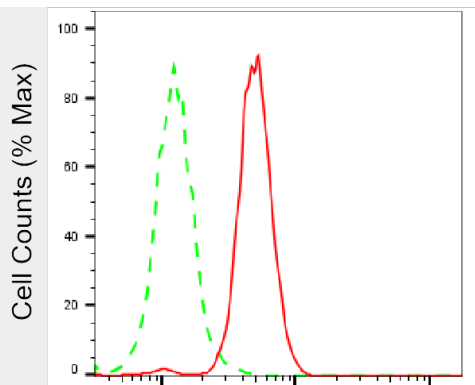
KD-Validated Anti-AGPS Rabbit Monoclonal Antibody - Images



Western blotting analysis using anti-alkylglycerone phosphate synthase antibody (Cat#AGI1458). Total cell lysates (30 µg) from various cell lines were loaded and separated by SDS-PAGE. The blot was incubated with anti-alkylglycerone phosphate synthase antibody (Cat#AGI1458, 1:5,000) and HRP-conjugated goat anti-rabbit secondary antibody respectively.



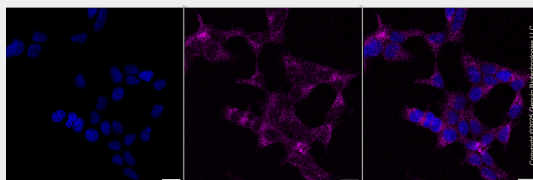
Western blotting analysis using anti-alkylglycerone phosphate synthase antibody (Cat#AGI1458). Alkylglycerone phosphate synthase expression in wild-type (WT) and alkylglycerone phosphate synthase (AGPS) shRNA knockdown (KD) HepG2 cells with 20 µg of total cell lysates. Hsp90 α serves as a loading control. The blot was incubated with anti-alkylglycerone phosphate synthase antibody (Cat#AGI1458, 1:5,000) and HRP-conjugated goat anti-rabbit secondary antibody respectively.



Copyright ©2025 Genuin Biotechnologies LLC

Alkylglycerone phosphate synthase-
Alexa Fluor® 647

Flow cytometric analysis of Alkylglycerone phosphate synthase expression in HeLa cells using anti-Alkylglycerone phosphate synthase antibody (Cat#AGI1458, 1:2,000). Green, isotype control; red, Alkylglycerone phosphate synthase.



Copyright ©2025 Genuin Biotechnologies LLC

Immunocytochemical staining of HeLa cells with anti-Alkylglycerone phosphate synthase antibody (Cat#AGI1458, 1:1,000). Nuclei were stained blue with DAPI; Alkylglycerone phosphate synthase was stained magenta with Alexa Fluor® 647. Images were taken using Leica stellaris 5. Protein abundance based on laser Intensity and smart gain: Low. Scale bar, 20 µm.