

KD-Validated Anti-AVEN Rabbit Monoclonal Antibody
Rabbit monoclonal antibody
Catalog # AGI1461**Specification**

KD-Validated Anti-AVEN Rabbit Monoclonal Antibody - Product Information

Application	WB, FC, ICC
Primary Accession	Q9NQS1
Reactivity	Rat, Human, Mouse
Clonality	Monoclonal
Isotype	Rabbit IgG
Calculated MW	Predicted, 39 kDa; observed, 50 kDa kDa
Gene Name	AVEN
Aliases	AVEN; Apoptosis And Caspase Activation Inhibitor; Cell Death Regulator Aven; PDCD12; Programmed Cell Death 12; Apoptosis, Caspase Activation Inhibitor
Immunogen	A synthesized peptide derived from human AVEN

KD-Validated Anti-AVEN Rabbit Monoclonal Antibody - Additional Information

Gene ID	57099
Other Names	
Cell death regulator Aven, AVEN	

KD-Validated Anti-AVEN Rabbit Monoclonal Antibody - Protein Information**Name** AVEN**Function**

Protects against apoptosis mediated by Apaf-1.

Cellular Location

Endomembrane system; Peripheral membrane protein. Note=Associated with intracellular membranes

Tissue Location

Highly expressed in testis, ovary, thymus, prostate, spleen, small intestine, colon, heart, skeletal muscle, liver, kidney and pancreas

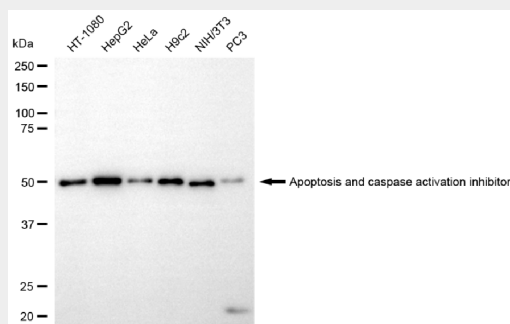
KD-Validated Anti-AVEN Rabbit Monoclonal Antibody - Protocols

Provided below are standard protocols that you may find useful for product applications.

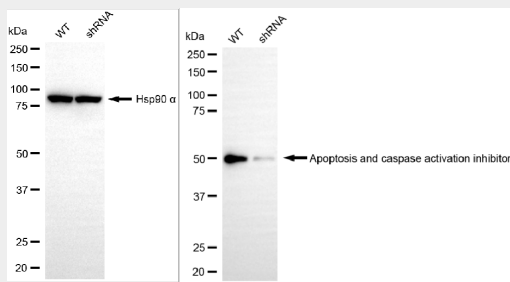
- [Western Blot](#)

- [Blocking Peptides](#)
- [Dot Blot](#)
- [Immunohistochemistry](#)
- [Immunofluorescence](#)
- [Immunoprecipitation](#)
- [Flow Cytometry](#)
- [Cell Culture](#)

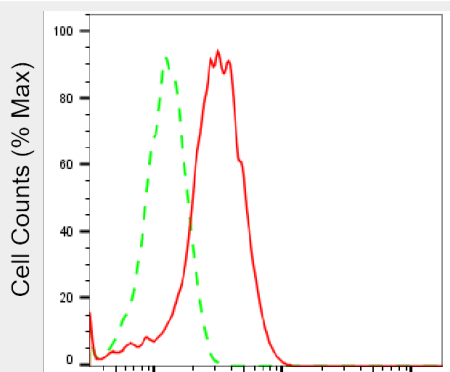
KD-Validated Anti-AVEN Rabbit Monoclonal Antibody - Images



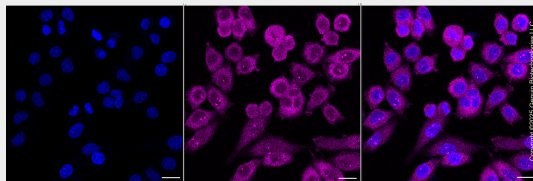
Western blotting analysis using anti-apoptosis and caspase activation inhibitor antibody (Cat#AGI1461). Total cell lysates (30 µg) from various cell lines were loaded and separated by SDS-PAGE. The blot was incubated with anti-apoptosis and caspase activation inhibitor antibody (Cat#AGI1461, 1:5,000) and HRP-conjugated goat anti-rabbit secondary antibody respectively.



Western blotting analysis using anti-apoptosis and caspase activation inhibitor antibody (Cat#AGI1461). Apoptosis and caspase activation inhibitor expression in wild-type (WT) and apoptosis and caspase activation inhibitor (AVEN) shRNA knockdown (KD) HT-1080 cells with 20 µg of total cell lysates. Hsp90 α serves as a loading control. The blot was incubated with anti-apoptosis and caspase activation inhibitor antibody (Cat#AGI1461, 1:5,000) and HRP-conjugated goat anti-rabbit secondary antibody respectively.



Flow cytometric analysis of Apoptosis and caspase activation inhibitor expression in HepG2 cells using anti-Apoptosis and caspase activation inhibitor antibody (Cat#AGI1461, 1:2,000). Green, isotype control; red, Apoptosis and caspase activation inhibitor.



Immunocytochemical staining of HepG2 cells with anti-Apoptosis and caspase activation inhibitor antibody (Cat#AGI1461, 1:1,000). Nuclei were stained blue with DAPI; Apoptosis and caspase activation inhibitor was stained magenta with Alexa Fluor® 647. Images were taken using Leica stellaris 5. Protein abundance based on laser Intensity and smart gain: Medium. Scale bar, 20 μ m.