

KD-Validated Anti-CAB39 Rabbit Monoclonal Antibody
Rabbit monoclonal antibody
Catalog # AGI1462**Specification**

KD-Validated Anti-CAB39 Rabbit Monoclonal Antibody - Product Information

| | |
|-------------------|--|
| Application | WB, FC, ICC |
| Primary Accession | Q9Y376 |
| Reactivity | Rat, Human, Mouse |
| Clonality | Monoclonal |
| Isotype | Rabbit IgG |
| Calculated MW | Predicted, 40 kDa; observed, 37 kDa |
| Gene Name | KDa CAB39 |
| Aliases | CAB39; Calcium Binding Protein 39; MO25; CGI-66; Calcium-Binding Protein 39; MO25alpha; Protein Mo25 |
| Immunogen | A synthesized peptide derived from human CAB39/MO25 |

KD-Validated Anti-CAB39 Rabbit Monoclonal Antibody - Additional Information

| | |
|--|-------|
| Gene ID | 51719 |
| Other Names | |
| Calcium-binding protein 39, MO25alpha, Protein Mo25, CAB39, MO25 | |

KD-Validated Anti-CAB39 Rabbit Monoclonal Antibody - Protein Information**Name** CAB39**Synonyms** MO25**Function**

Component of a complex that binds and activates STK11/LKB1. In the complex, required to stabilize the interaction between CAB39/MO25 (CAB39/MO25alpha or CAB39L/MO25beta) and STK11/LKB1.

Cellular Location

Cytoplasm.

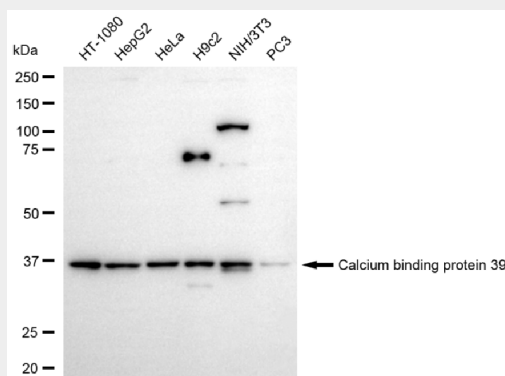
KD-Validated Anti-CAB39 Rabbit Monoclonal Antibody - Protocols

Provided below are standard protocols that you may find useful for product applications.

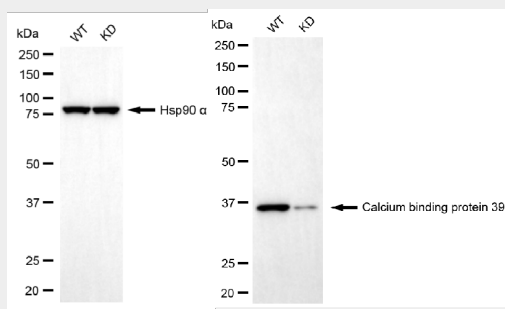
- [Western Blot](#)
- [Blocking Peptides](#)
- [Dot Blot](#)

- [Immunohistochemistry](#)
- [Immunofluorescence](#)
- [Immunoprecipitation](#)
- [Flow Cytometry](#)
- [Cell Culture](#)

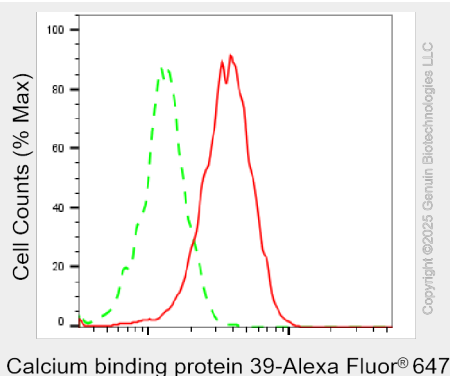
KD-Validated Anti-CAB39 Rabbit Monoclonal Antibody - Images



Western blotting analysis using anti-calcium binding protein 39 antibody (Cat#AGI1462). Total cell lysates (30 µg) from various cell lines were loaded and separated by SDS-PAGE. The blot was incubated with anti-calcium binding protein 39 antibody (Cat#AGI1462, 1:5,000) and HRP-conjugated goat anti-rabbit secondary antibody respectively.

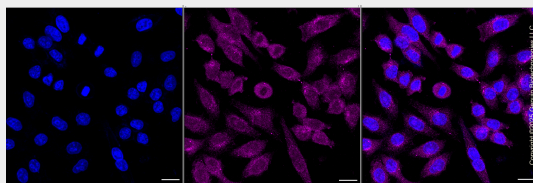


Western blotting analysis using anti-calcium binding protein 39 antibody (Cat#AGI1462). Calcium binding protein 39 expression in wild-type (WT) and calcium binding protein 39 (CAB39) knockdown (KD) 293T cells with 20 µg of total cell lysates. Hsp90 α serves as a loading control. The blot was incubated with anti-calcium binding protein 39 antibody (Cat#AGI1462, 1:5,000) and HRP-conjugated goat anti-rabbit secondary antibody respectively.



Flow cytometric analysis of Calcium binding protein 39 expression in HepG2 cells using anti-Calcium binding protein 39 antibody (Cat#AGI1462, 1:2,000). Green, isotype control; red,

Calcium binding protein 39.



Immunocytochemical staining of HepG2 cells with anti-Calcium binding protein 39 antibody (Cat#AGI1462, 1:1,000). Nuclei were stained blue with DAPI; Calcium binding protein 39 was stained magenta with Alexa Fluor® 647. Images were taken using Leica stellaris 5. Protein abundance based on laser Intensity and smart gain: Medium. Scale bar, 20 μ m.