

KD-Validated Anti-Synaptophysin like 1 Rabbit Monoclonal Antibody
Rabbit monoclonal antibody
Catalog # AGI1466**Specification**

KD-Validated Anti-Synaptophysin like 1 Rabbit Monoclonal Antibody - Product Information

Application	WB, FC, ICC
Primary Accession	Q16563
Reactivity	Human
Clonality	Monoclonal
Isotype	Rabbit IgG
Calculated MW	Predicted, 29 kDa , observed, 29-37 kDa
Gene Name	KDa
Aliases	SYPL1 SYPL1; Synaptophysin Like 1; Pantophysin; SYPL; Synaptophysin-Like Protein 1; Synaptophysin-Like Protein; Synaptophysin-Like 1; H-SP1
Immunogen	A synthesized peptide derived from human SYPL1

KD-Validated Anti-Synaptophysin like 1 Rabbit Monoclonal Antibody - Additional Information

Gene ID	6856
Other Names	
Synaptophysin-like protein 1, Pantophysin, SYPL1, SYPL	

KD-Validated Anti-Synaptophysin like 1 Rabbit Monoclonal Antibody - Protein Information**Name** SYPL1**Synonyms** SYPL**Cellular Location**

Cytoplasmic vesicle membrane; Multi-pass membrane protein. Melanosome. Note=Cytoplasmic transport vesicles (By similarity). Identified by mass spectrometry in melanosome fractions from stage I to stage IV.

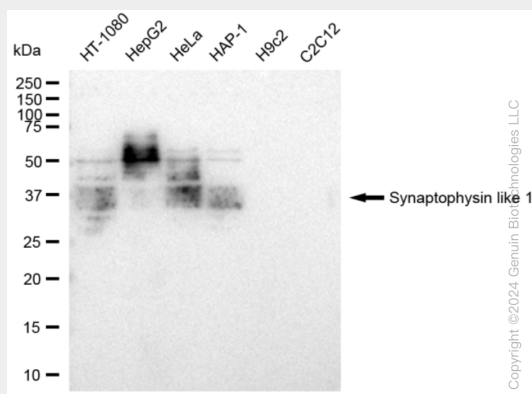
KD-Validated Anti-Synaptophysin like 1 Rabbit Monoclonal Antibody - Protocols

Provided below are standard protocols that you may find useful for product applications.

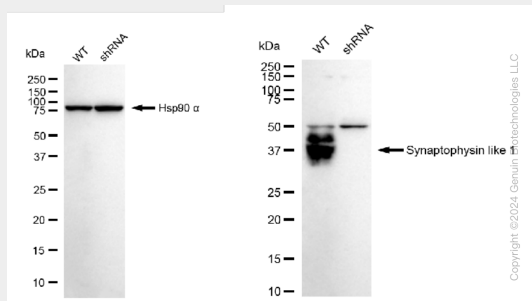
- [Western Blot](#)

- [Blocking Peptides](#)
- [Dot Blot](#)
- [Immunohistochemistry](#)
- [Immunofluorescence](#)
- [Immunoprecipitation](#)
- [Flow Cytometry](#)
- [Cell Culture](#)

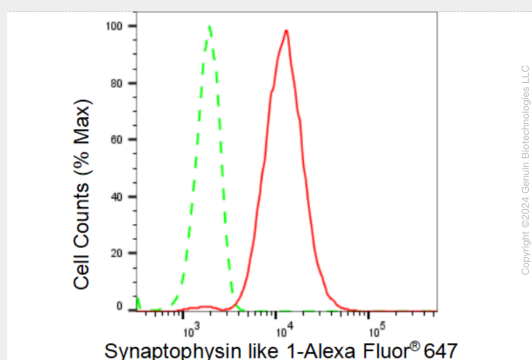
KD-Validated Anti-Synaptophysin like 1 Rabbit Monoclonal Antibody - Images



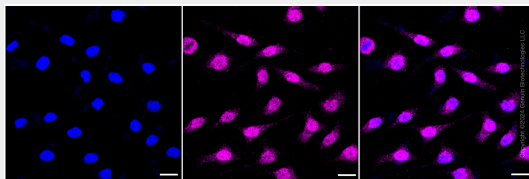
Western blotting analysis using anti-Synaptophysin like 1 antibody (Cat#AGI1466). Total cell lysates (30 µg) from various cell lines were loaded and separated by SDS-PAGE. The blot was incubated with anti-Synaptophysin like 1 antibody (Cat#AGI1466, 1:5,000) and HRP-conjugated goat anti-rabbit secondary antibody respectively.



Western blotting analysis using anti-Synaptophysin like 1 antibody (Cat#AGI1466). Synaptophysin like 1 expression in wild type (WT) and Synaptophysin like 1 shRNA knockdown (KD) HeLa cells with 30 µg of total cell lysates. Hsp90 α serves as a loading control. The blot was incubated with anti-Synaptophysin like 1 antibody (Cat#AGI1466, 1:5,000) and HRP-conjugated goat anti-rabbit secondary antibody respectively.



Flow cytometric analysis of Synaptophysin like 1 expression in HeLa cells using Synaptophysin like 1 antibody (Cat#AGI1466, 1:2,000). Green, isotype control; red, Synaptophysin like 1.



Immunocytochemical staining of HeLa cells with Synaptophysin like 1 antibody (Cat#AGI1466, 1:1,000). Nuclei were stained blue with DAPI; Synaptophysin like 1 was stained magenta with Alexa Fluor® 647. Images were taken using Leica stellaris 5. Protein abundance based on laser Intensity and smart gain: Medium. Scale bar: 20 μ m.