

**KD-Validated Anti-TSFM Rabbit Monoclonal Antibody**  
**Rabbit monoclonal antibody**  
**Catalog # AGI1469****Specification**

---

**KD-Validated Anti-TSFM Rabbit Monoclonal Antibody - Product Information**

Application	WB, FC, ICC
Primary Accession	<a href="#">P43897</a>
Reactivity	Rat, Human, Mouse
Clonality	Monoclonal
Isotype	Rabbit IgG
Calculated MW	Predicted, 35 kDa , observed, 32 kDa KDa
Gene Name	TSFM
Aliases	TSFM; Ts Translation Elongation Factor, Mitochondrial; Elongation Factor Ts, Mitochondrial; EF-TS; Mitochondrial Elongation Factor Ts; EF-Tsmt; EF-TSMT; EF-TsMt; EFTSMT; EF-Ts; EFTS
Immunogen	A synthesized peptide derived from human TSFM

**KD-Validated Anti-TSFM Rabbit Monoclonal Antibody - Additional Information**

Gene ID	10102
<b>Other Names</b>	
Elongation factor Ts, mitochondrial {ECO:0000255 HAMAP-Rule:MF_03135}, EF-Ts {ECO:0000255 HAMAP-Rule:MF_03135}, EF-TsMt {ECO:0000255 HAMAP-Rule:MF_03135}, TSFM {ECO:0000255 HAMAP-Rule:MF_03135}	

**KD-Validated Anti-TSFM Rabbit Monoclonal Antibody - Protein Information**

**Name** TSFM {ECO:0000255|HAMAP-Rule:MF\_03135}

**Function**

Associates with the EF-Tu.GDP complex and induces the exchange of GDP to GTP. It remains bound to the aminoacyl-tRNA.EF- Tu.GTP complex up to the GTP hydrolysis stage on the ribosome.

**Cellular Location**

Mitochondrion.

**Tissue Location**

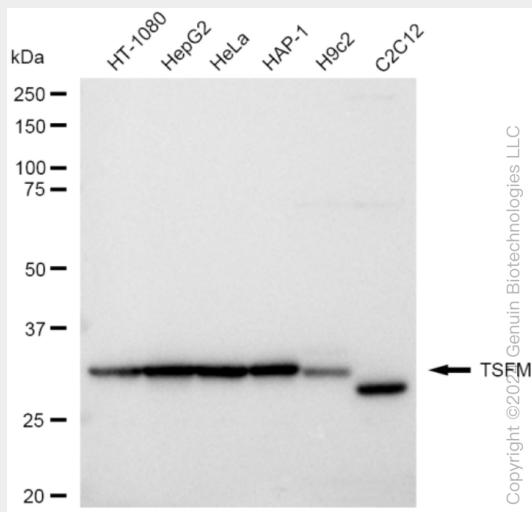
Expressed in all tissues, with the highest levels of expression in skeletal muscle, liver and kidney

**KD-Validated Anti-TSFM Rabbit Monoclonal Antibody - Protocols**

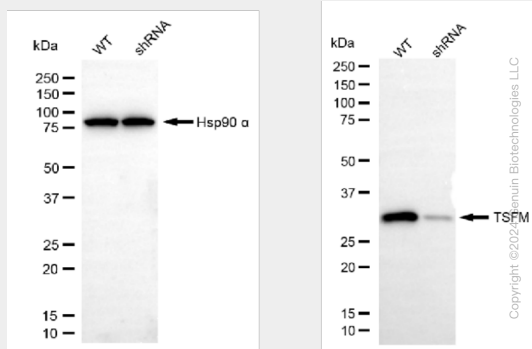
Provided below are standard protocols that you may find useful for product applications.

- [Western Blot](#)
- [Blocking Peptides](#)
- [Dot Blot](#)
- [Immunohistochemistry](#)
- [Immunofluorescence](#)
- [Immunoprecipitation](#)
- [Flow Cytometry](#)
- [Cell Culture](#)

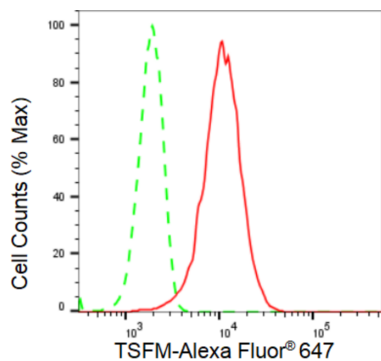
## KD-Validated Anti-TSFM Rabbit Monoclonal Antibody - Images



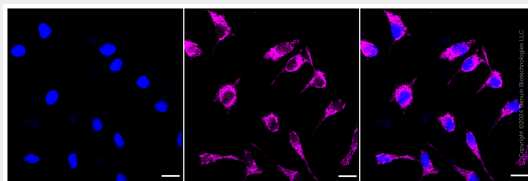
Western blotting analysis using anti-TSFM antibody (Cat#AGI1469). Total cell lysates (30 µg) from various cell lines were loaded and separated by SDS-PAGE. The blot was incubated with anti-TSFM antibody (Cat#AGI1469, 1:5,000) and HRP-conjugated goat anti-rabbit secondary antibody respectively.



Western blotting analysis using anti-TSFM antibody (Cat#AGI1469). TSFM expression in wild type (WT) and TSFM shRNA knockdown (KD) HeLa cells with 30 µg of total cell lysates. β-Tubulin serves as a loading control. The blot was incubated with anti-TSFM antibody (Cat#AGI1469, 1:5,000) and HRP-conjugated goat anti-rabbit secondary antibody respectively.



Flow cytometric analysis of TSFM expression in HeLa cells using TSFM antibody (Cat#AGI1469, 1:2,000). Green, isotype control; red, TSFM.



Immunocytochemical staining of HeLa cells with TSFM antibody (Cat#AGI1469, 1:1,000). Nuclei were stained blue with DAPI; TSFM was stained magenta with Alexa Fluor® 647. Images were taken using Leica stellaris 5. Protein abundance based on laser Intensity and smart gain: Medium. Scale bar: 20 µm.