

KD-Validated Anti-CRKL Rabbit Monoclonal Antibody
Rabbit monoclonal antibody
Catalog # AGI1473**Specification**

KD-Validated Anti-CRKL Rabbit Monoclonal Antibody - Product Information

Application	WB
Primary Accession	P46109
Reactivity	Rat, Human, Mouse
Clonality	Monoclonal
Isotype	Rabbit IgG
Calculated MW	Predicted, 34 kDa , observed, 37 kDa KDa
Gene Name	CRKL
Aliases	CRKL; CRK Like Proto-Oncogene, Adaptor Protein; V-Crk Avian Sarcoma Virus CT10 Oncogene Homolog-Like; Crk-Like Protein
Immunogen	A synthesized peptide derived from human CrkL

KD-Validated Anti-CRKL Rabbit Monoclonal Antibody - Additional Information

Gene ID	1399
Other Names	
Crk-like protein, CRKL	

KD-Validated Anti-CRKL Rabbit Monoclonal Antibody - Protein Information**Name** CRKL**Function**

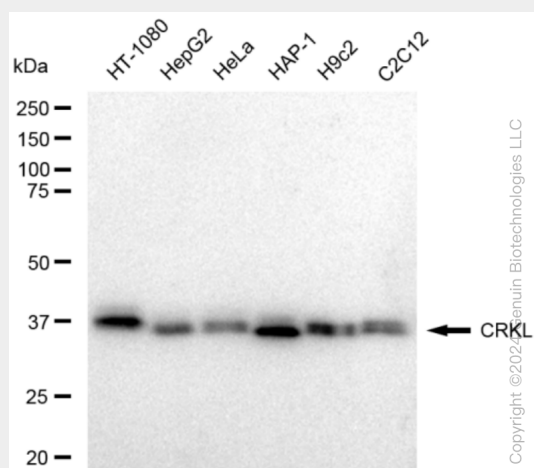
May mediate the transduction of intracellular signals.

KD-Validated Anti-CRKL Rabbit Monoclonal Antibody - Protocols

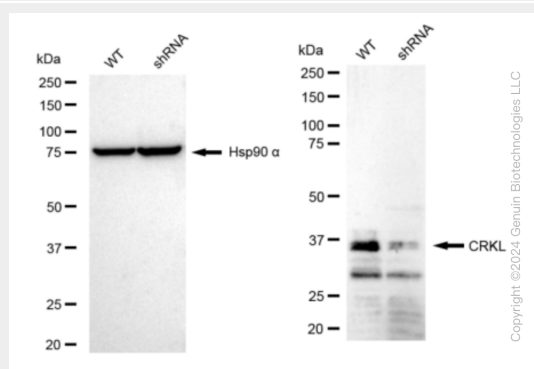
Provided below are standard protocols that you may find useful for product applications.

- [Western Blot](#)
- [Blocking Peptides](#)
- [Dot Blot](#)
- [Immunohistochemistry](#)
- [Immunofluorescence](#)
- [Immunoprecipitation](#)
- [Flow Cytometry](#)
- [Cell Culture](#)

KD-Validated Anti-CRKL Rabbit Monoclonal Antibody - Images



Western blotting analysis using anti-CRKL antibody (Cat#AGI1473). Total cell lysates (30 µg) from various cell lines were loaded and separated by SDS-PAGE. The blot was incubated with anti-CRKL antibody (Cat#AGI1473, 1:5,000) and HRP-conjugated goat anti-rabbit secondary antibody respectively.



Western blotting analysis using anti-CRKL antibody (Cat#AGI1473). CRKL expression in wild type (WT) and CRKL shRNA knockdown (KD) HT-1080 cells with 30 µg of total cell lysates. Hsp90 α serves as a loading control. The blot was incubated with anti-CRKL antibody (Cat#AGI1473, 1:5,000) and HRP-conjugated goat anti-rabbit secondary antibody respectively.