

KD-Validated Anti-ATP1B3 Rabbit Monoclonal Antibody
Rabbit monoclonal antibody
Catalog # AGI1474**Specification****KD-Validated Anti-ATP1B3 Rabbit Monoclonal Antibody - Product Information**

Application	WB
Primary Accession	P54709
Reactivity	Rat, Human, Mouse
Clonality	Monoclonal
Isotype	Rabbit IgG
Calculated MW	Predicted, 32 kDa , observed, 37 kDa KDa
Gene Name	ATP1B3
Aliases	ATP1B3; ATPase Na ⁺ /K ⁺ Transporting Subunit Beta 3; Sodium/Potassium-Transporting ATPase Subunit Beta-3; CD298; Sodium-Potassium ATPase Subunit Beta 3 (Non-Catalytic); Sodium/Potassium-Dependent ATPase Subunit Beta-3; ATPase, Na ⁺ /K ⁺ Transporting, Beta 3 Polypeptide; Sodium Pump Subunit Beta-3; FLJ29027; ATPB-3; Sodium/Potassium-Transporting ATPase Beta-3 Chain; Na, K-ATPase Beta-3 Polypeptide; CD298 Antigen
Immunogen	A synthesized peptide derived from human ATP1B3

KD-Validated Anti-ATP1B3 Rabbit Monoclonal Antibody - Additional Information

Gene ID	483
Other Names	
Sodium/potassium-transporting ATPase subunit beta-3, Sodium/potassium-dependent ATPase subunit beta-3, ATPB-3, CD298, ATP1B3	

KD-Validated Anti-ATP1B3 Rabbit Monoclonal Antibody - Protein Information**Name** ATP1B3**Function**

This is the non-catalytic component of the active enzyme, which catalyzes the hydrolysis of ATP coupled with the exchange of Na(+) and K(+) ions across the plasma membrane. The exact function of the beta-3 subunit is not known.

Cellular Location

Apical cell membrane {ECO:0000250|UniProtKB:Q63377}; Single-pass type II membrane protein. Basolateral cell membrane {ECO:0000250|UniProtKB:Q63377}; Single-pass type II membrane protein. Melanosome Note=Identified by mass spectrometry in melanosome fractions from stage I

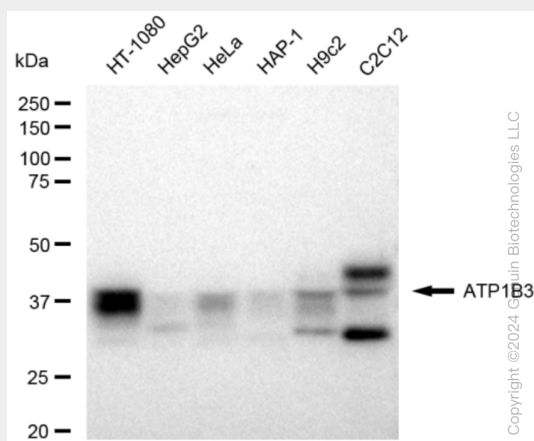
to stage IV

KD-Validated Anti-ATP1B3 Rabbit Monoclonal Antibody - Protocols

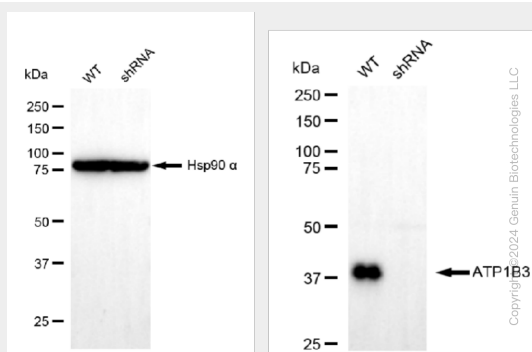
Provided below are standard protocols that you may find useful for product applications.

- [Western Blot](#)
- [Blocking Peptides](#)
- [Dot Blot](#)
- [Immunohistochemistry](#)
- [Immunofluorescence](#)
- [Immunoprecipitation](#)
- [Flow Cytometry](#)
- [Cell Culture](#)

KD-Validated Anti-ATP1B3 Rabbit Monoclonal Antibody - Images



Western blotting analysis using anti-ATP1B3 antibody (Cat#AGI1474). Total cell lysates (30 µg) from various cell lines were loaded and separated by SDS-PAGE. The blot was incubated with anti-ATP1B3 antibody (Cat#AGI1474, 1:5,000) and HRP-conjugated goat anti-rabbit secondary antibody respectively.



Western blotting analysis using anti-ATP1B3 antibody (Cat#AGI1474). ATP1B3 expression in wild type (WT) and ATP1B3 shRNA knockdown (KD) HeLa cells with 30 µg of total cell lysates. Hsp90 α serves as a loading control. The blot was incubated with anti-ATP1B3 antibody (Cat#AGI1474, 1:5,000) and HRP-conjugated goat anti-rabbit secondary antibody respectively.