

KD-Validated Anti-Acetyl-CoA acetyltransferase 2 Rabbit Monoclonal Antibody
Rabbit monoclonal antibody
Catalog # AGI1475**Specification****KD-Validated Anti-Acetyl-CoA acetyltransferase 2 Rabbit Monoclonal Antibody - Product Information**

Application	WB, FC
Primary Accession	Q9BWD1
Reactivity	Rat, Human, Mouse
Clonality	Monoclonal
Isotype	Rabbit IgG
Calculated MW	Predicted, 41 kDa , observed, 38 kDa KDa
Gene Name	ACAT2
Aliases	ACAT2; Acetyl-CoA Acetyltransferase 2; Acetyl-CoA Acetyltransferase, Cytosolic; Acetyl-CoA Transferase-Like Protein; Cytosolic Acetoacetyl-CoA Thiolase; Acetoacetyl Coenzyme A Thiolase; EC 2.3.1.9; Acetyl-Coenzyme A Acetyltransferase 2 (Acetoacetyl Coenzyme A Thiolase); Acetyl-Coenzyme A Acetyltransferase 2; EC 2.3.1; ACTL
Immunogen	A synthesized peptide derived from human ACAT2

KD-Validated Anti-Acetyl-CoA acetyltransferase 2 Rabbit Monoclonal Antibody - Additional Information

Gene ID	39
Other Names	
Acetyl-CoA acetyltransferase, cytosolic, 2.3.1.9 {ECO:0000255 PROSITE-ProRule:PRU10020, ECO:0000269 PubMed:7911016}, Acetyl-CoA transferase-like protein, Cytosolic acetoacetyl-CoA thiolase, ACAT2, ACTL	

KD-Validated Anti-Acetyl-CoA acetyltransferase 2 Rabbit Monoclonal Antibody - Protein Information**Name** ACAT2**Synonyms** ACTL**Function**

Involved in the biosynthetic pathway of cholesterol.

Cellular Location

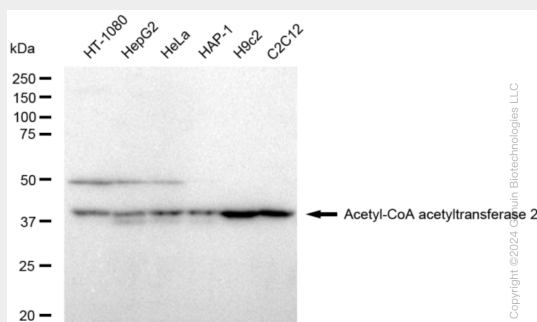
Cytoplasm, cytosol.

KD-Validated Anti-Acetyl-CoA acetyltransferase 2 Rabbit Monoclonal Antibody - Protocols

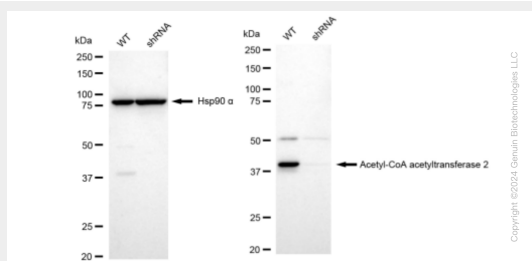
Provided below are standard protocols that you may find useful for product applications.

- [Western Blot](#)
- [Blocking Peptides](#)
- [Dot Blot](#)
- [Immunohistochemistry](#)
- [Immunofluorescence](#)
- [Immunoprecipitation](#)
- [Flow Cytometry](#)
- [Cell Culture](#)

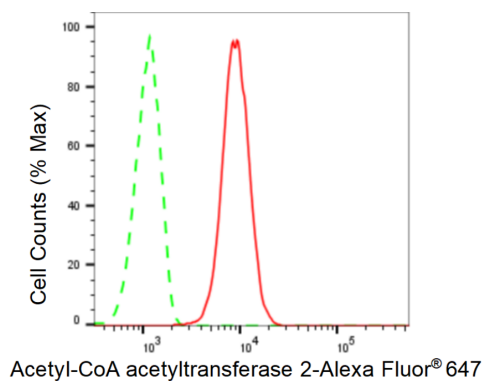
KD-Validated Anti-Acetyl-CoA acetyltransferase 2 Rabbit Monoclonal Antibody - Images



Western blotting analysis using anti-Acetyl-CoA acetyltransferase 2 antibody (Cat#AGI1475). Total cell lysates (30 µg) from various cell lines were loaded and separated by SDS-PAGE. The blot was incubated with anti-Acetyl-CoA acetyltransferase 2 antibody (Cat#AGI1475, 1:5,000) and HRP-conjugated goat anti-rabbit secondary antibody respectively.



Western blotting analysis using anti-Acetyl-CoA acetyltransferase 2 antibody (Cat#AGI1475). Acetyl-CoA acetyltransferase 2 expression in wild type (WT) and Acetyl-CoA acetyltransferase 2 shRNA knockdown (KD) HeLa cells with 30 µg of total cell lysates. Hsp90 α serves as a loading control. The blot was incubated with anti-Acetyl-CoA acetyltransferase 2 antibody (Cat#AGI1475, 1:5,000) and HRP-conjugated goat anti-rabbit secondary antibody respectively.



Flow cytometric analysis of Acetyl-CoA acetyltransferase 2 expression in C2C12 cells using Acetyl-CoA acetyltransferase 2 antibody (Cat#AG11475, 1:2,000). Green, isotype control; red, Acetyl-CoA acetyltransferase 2.