

KD-Validated Anti-LMAN1 Rabbit Monoclonal Antibody
Rabbit monoclonal antibody
Catalog # AGI1483**Specification****KD-Validated Anti-LMAN1 Rabbit Monoclonal Antibody - Product Information**

Application	WB
Primary Accession	P49257
Reactivity	Rat, Human, Mouse
Clonality	Monoclonal
Isotype	Rabbit IgG
Calculated MW	Predicted, 58 kDa , observed, 55 kDa KDa
Gene Name	LMAN1
Aliases	LMAN1; Lectin, Mannose Binding; ERGIC53; ERGIC-53; MCFD1; FMFD1; F5F8D; MR60; Gp58; Endoplasmic Reticulum-Golgi Intermediate Compartment Protein; ER-Golgi Intermediate Compartment 53 KDa Protein; Intracellular Mannose-Specific Lectin MR60; Protein ERGIC-53; Coagulation Factor V-Factor VIII Combined Deficiency; Lectin, Mannose-Binding; Lectin Mannose-Binding; GP58
Immunogen	A synthesized peptide derived from human LMAN1

KD-Validated Anti-LMAN1 Rabbit Monoclonal Antibody - Additional Information

Gene ID	3998
Other Names	
Protein ERGIC-53, ER-Golgi intermediate compartment 53 kDa protein, Gp58, Intracellular mannose-specific lectin MR60, Lectin mannose-binding 1, LMAN1, ERGIC53, F5F8D	

KD-Validated Anti-LMAN1 Rabbit Monoclonal Antibody - Protein Information**Name** LMAN1**Synonyms** ERGIC53, F5F8D**Function**

Mannose-specific lectin. May recognize sugar residues of glycoproteins, glycolipids, or glycosylphosphatidyl inositol anchors and may be involved in the sorting or recycling of proteins, lipids, or both. The LMAN1-MCFD2 complex forms a specific cargo receptor for the ER-to-Golgi transport of selected proteins.

Cellular Location

Endoplasmic reticulum-Golgi intermediate compartment membrane; Single-pass type I membrane protein. Golgi apparatus membrane; Single-pass membrane protein. Endoplasmic reticulum

membrane; Single-pass type I membrane protein

Tissue Location

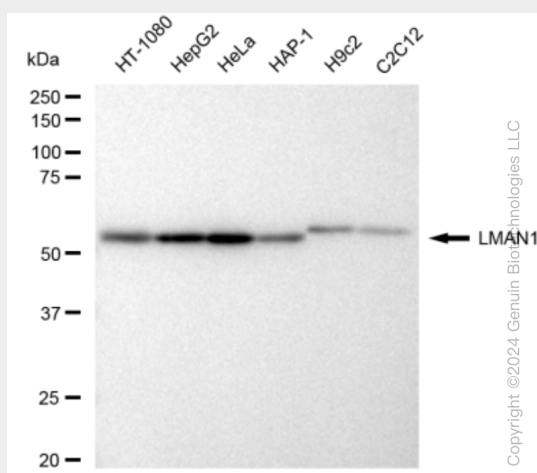
Ubiquitous..

KD-Validated Anti-LMAN1 Rabbit Monoclonal Antibody - Protocols

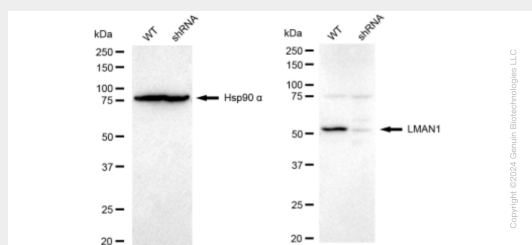
Provided below are standard protocols that you may find useful for product applications.

- [Western Blot](#)
- [Blocking Peptides](#)
- [Dot Blot](#)
- [Immunohistochemistry](#)
- [Immunofluorescence](#)
- [Immunoprecipitation](#)
- [Flow Cytometry](#)
- [Cell Culture](#)

KD-Validated Anti-LMAN1 Rabbit Monoclonal Antibody - Images



Western blotting analysis using anti-LMAN1 antibody (Cat#AGI1483). Total cell lysates (30 µg) from various cell lines were loaded and separated by SDS-PAGE. The blot was incubated with anti-LMAN1 antibody (Cat#AGI1483, 1:5,000) and HRP-conjugated goat anti-rabbit secondary antibody respectively.



Western blotting analysis using anti-LMAN1 antibody (Cat#AGI1483). LMAN1 expression in wild type (WT) and LMAN1 shRNA knockdown (KD) HeLa cells with 30 µg of total cell lysates. Hsp90 α serves as a loading control. The blot was incubated with anti-LMAN1 antibody (Cat#AGI1483, 1:5,000) and HRP-conjugated goat anti-rabbit secondary antibody respectively.