

KD-Validated Anti-Phospho-PBK/TOPK (Thr9) Rabbit Monoclonal Antibody
Rabbit monoclonal antibody
Catalog # AGI1485**Specification****KD-Validated Anti-Phospho-PBK/TOPK (Thr9) Rabbit Monoclonal Antibody - Product Information**

Application	WB, FC
Primary Accession	Q96KB5
Reactivity	Human
Clonality	Monoclonal
Isotype	Rabbit IgG
Calculated MW	Predicted, 36 kDa , observed, 40 kDa
Gene Name	PBK
Aliases	PBK; PDZ Binding Kinase; TOPK; CT84; SPK; T-LAK Cell-Originated Protein Kinase; Cancer/Testis Antigen 84; Nori-3; Lymphokine-Activated Killer T-Cell-Originated Protein Kinase; Spermatogenesis-Related Protein Kinase; MAPKK-Like Protein Kinase; FLJ14385; Serine/Threonine Protein Kinase; Epididymis Luminal Protein 164; PDZ-Binding Kinase; EC 2.7.12.2; HEL164; NORI-3
Immunogen	A synthesized peptide derived from human Phospho-PBK/TOPK (Thr9)

KD-Validated Anti-Phospho-PBK/TOPK (Thr9) Rabbit Monoclonal Antibody - Additional InformationGene ID **55872****Other Names**

Lymphokine-activated killer T-cell-originated protein kinase, 2.7.12.2, Cancer/testis antigen 84, CT84, MAPKK-like protein kinase, Nori-3, PDZ-binding kinase, Spermatogenesis-related protein kinase, SPK, T-LAK cell-originated protein kinase, PBK, TOPK

KD-Validated Anti-Phospho-PBK/TOPK (Thr9) Rabbit Monoclonal Antibody - Protein Information**Name** PBK**Synonyms** TOPK**Function**

Phosphorylates MAP kinase p38. Seems to be active only in mitosis. May also play a role in the activation of lymphoid cells. When phosphorylated, forms a complex with TP53, leading to TP53 destabilization and attenuation of G2/M checkpoint during doxorubicin- induced DNA damage.

Tissue Location

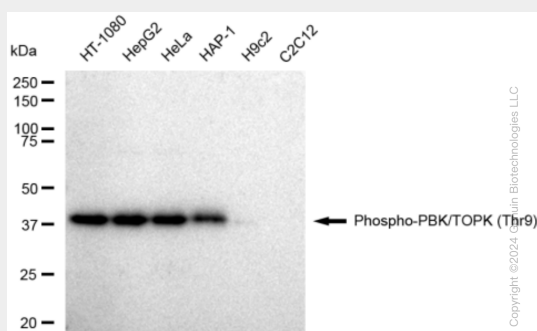
Expressed in the testis and placenta. In the testis, restrictedly expressed in outer cell layer of seminiferous tubules.

KD-Validated Anti-Phospho-PBK/TOPK (Thr9) Rabbit Monoclonal Antibody - Protocols

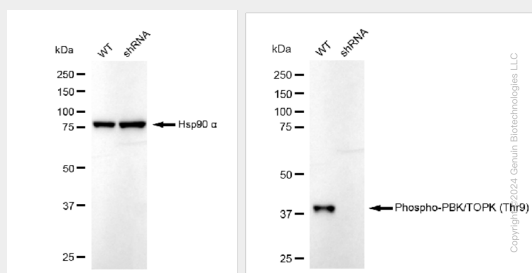
Provided below are standard protocols that you may find useful for product applications.

- [Western Blot](#)
- [Blocking Peptides](#)
- [Dot Blot](#)
- [Immunohistochemistry](#)
- [Immunofluorescence](#)
- [Immunoprecipitation](#)
- [Flow Cytometry](#)
- [Cell Culture](#)

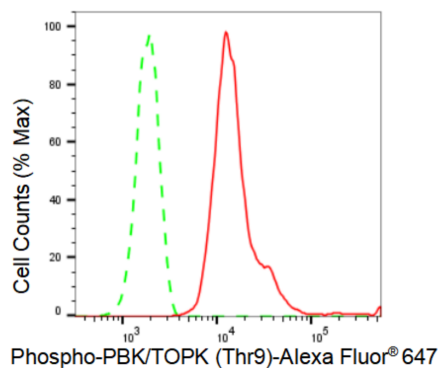
KD-Validated Anti-Phospho-PBK/TOPK (Thr9) Rabbit Monoclonal Antibody - Images



Western blotting analysis using anti-Phospho-PBK/TOPK (Thr9) antibody (Cat#AGI1485). Total cell lysates (30 µg) from various cell lines were loaded and separated by SDS-PAGE. The blot was incubated with anti-Phospho-PBK/TOPK (Thr9) antibody (Cat#AGI1485, 1:5,000) and HRP-conjugated goat anti-rabbit secondary antibody respectively.



Western blotting analysis using anti-Phospho-PBK/TOPK (Thr9) antibody (Cat#AGI1485). Phospho-PBK/TOPK (Thr9) expression in wild type (WT) and Phospho-PBK/TOPK (Thr9) shRNA knockdown (KD) HeLa cells with 30 µg of total cell lysates. Hsp90 α serves as a loading control. The blot was incubated with anti-Phospho-PBK/TOPK (Thr9) antibody (Cat#AGI1485, 1:5,000) and HRP-conjugated goat anti-rabbit secondary antibody respectively.



Flow cytometric analysis of Phospho-PBK/TOPK (Thr9) expression in HepG2 cells using Phospho-PBK/TOPK (Thr9) antibody (Cat#AGI1485, 1:2,000). Green, isotype control; red, Phospho-PBK/TOPK (Thr9).