

**KD-Validated Anti-DDT Mouse Monoclonal Antibody**  
**Mouse monoclonal antibody**  
**Catalog # AGI1487****Specification**

---

**KD-Validated Anti-DDT Mouse Monoclonal Antibody - Product Information**

Application	WB
Primary Accession	<a href="#">P30046</a>
Reactivity	Human
Clonality	Monoclonal
Isotype	Mouse IgG1
Calculated MW	Predicted, 13 kDa; observed, 13 kDa kDa
Gene Name	DDT
Aliases	DDT; D-Dopachrome Tautomerase; D-Dopachrome Decarboxylase; MIF-2; DDCT; MIF2; D-DT; Phenylpyruvate Tautomerase II; EC 4.1.1.84
Immunogen	Recombinant protein of human DDT

**KD-Validated Anti-DDT Mouse Monoclonal Antibody - Additional Information**

Gene ID	1652
<b>Other Names</b>	
D-dopachrome decarboxylase, 4.1.1.84, D-dopachrome tautomerase, Phenylpyruvate tautomerase II, DDT	

**KD-Validated Anti-DDT Mouse Monoclonal Antibody - Protein Information****Name** DDT**Function**

Tautomerization of D-dopachrome with decarboxylation to give 5,6-dihydroxyindole (DHI).

**Cellular Location**

Cytoplasm.

**Tissue Location**

Highly expressed in the liver and at lower levels in the heart, lung and pancreas.

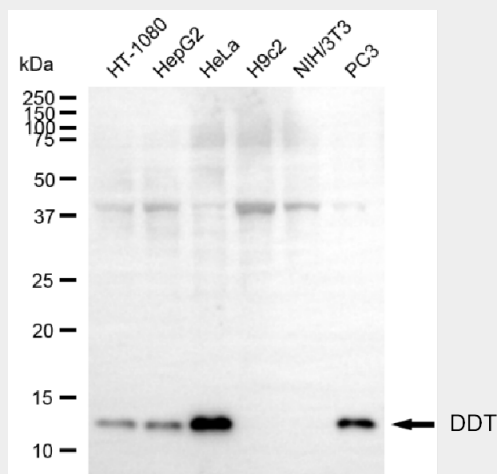
**KD-Validated Anti-DDT Mouse Monoclonal Antibody - Protocols**

Provided below are standard protocols that you may find useful for product applications.

- [Western Blot](#)
- [Blocking Peptides](#)
- [Dot Blot](#)

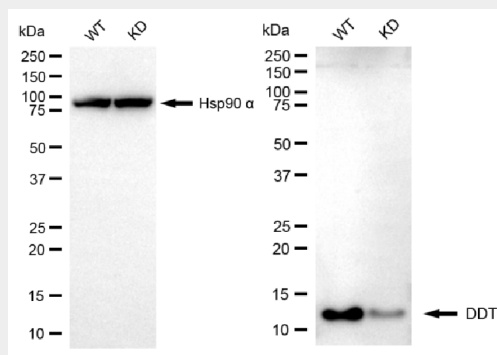
- [Immunohistochemistry](#)
- [Immunofluorescence](#)
- [Immunoprecipitation](#)
- [Flow Cytometry](#)
- [Cell Culture](#)

## KD-Validated Anti-DDT Mouse Monoclonal Antibody - Images



Copyright ©2025 Genuin Biotechnologies LLC

Western blotting analysis using anti-DDT antibody (Cat#AGI1487). Total cell lysates (30 µg) from various cell lines were loaded and separated by SDS-PAGE. The blot was incubated with anti-DDT antibody (Cat#AGI1487, 1:2,500) and HRP-conjugated goat anti-mouse secondary antibody respectively.



Copyright ©2025 Genuin Biotechnologies LLC

Western blotting analysis using anti-DDT antibody (Cat#AGI1487). DDT expression in wild-type (WT) and DDT knockdown (KD) HSHC cells with 20 µg of total cell lysates. Hsp90 α serves as a loading control. The blot was incubated with anti-DDT antibody (Cat#AGI1487, 1:2,500) and HRP-conjugated goat anti-mouse secondary antibody respectively.