

**KD-Validated Anti-TGF beta 1 Rabbit Monoclonal Antibody**  
**Rabbit monoclonal antibody**  
**Catalog # AGI1489****Specification****KD-Validated Anti-TGF beta 1 Rabbit Monoclonal Antibody - Product Information**

Application	WB
Primary Accession	<a href="#">P01137</a>
Reactivity	Rat, Human, Mouse
Clonality	Monoclonal
Isotype	Rabbit IgG
Calculated MW	Predicted, 44 kDa , observed, 48 kDa
Gene Name	TGFB1
Aliases	TGFB1; Transforming Growth Factor Beta 1; TGFB; CED; Transforming Growth Factor Beta-1 Proprotein; Prepro-Transforming Growth Factor Beta-1; TGFbeta; DPD1; Diaphyseal Dysplasia 1, Progressive; Transforming Growth Factor, Beta 1; Transforming Growth Factor Beta 1; Camurati-Engelmann Disease; Latency-Associated Peptide; TGF-Beta-1; TGF-Beta1; IBDIMDE; TGFBETA; LAP
Immunogen	A synthesized peptide derived from human TGF beta 1

**KD-Validated Anti-TGF beta 1 Rabbit Monoclonal Antibody - Additional Information**

Gene ID	7040
<b>Other Names</b>	
Transforming growth factor beta-1 proprotein, Latency-associated peptide, LAP, Transforming growth factor beta-1, TGF-beta-1, TGFB1 ( <a href="http://www.genenames.org/cgi-bin/gene_symbol_report?hgnc_id=11766" target="_blank">http://www.genenames.org/cgi-bin/gene_symbol_report?hgnc_id=11766</a> ), TGFB	

**KD-Validated Anti-TGF beta 1 Rabbit Monoclonal Antibody - Protein Information****Name** TGFB1 ([HGNC:11766](#))**Synonyms** TGFB**Function**

Transforming growth factor beta-1 proprotein: Precursor of the Latency-associated peptide (LAP) and Transforming growth factor beta-1 (TGF-beta-1) chains, which constitute the regulatory and active subunit of TGF-beta-1, respectively.

**Cellular Location**

[Latency-associated peptide]: Secreted, extracellular space, extracellular matrix

### Tissue Location

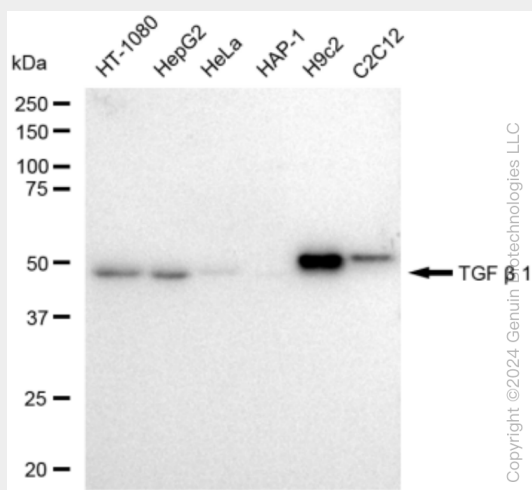
Highly expressed in bone (PubMed:11746498, PubMed:17827158). Abundantly expressed in articular cartilage and chondrocytes and is increased in osteoarthritis (OA) (PubMed:11746498, PubMed:17827158). Colocalizes with ASPN in chondrocytes within OA lesions of articular cartilage (PubMed:17827158)

### KD-Validated Anti-TGF beta 1 Rabbit Monoclonal Antibody - Protocols

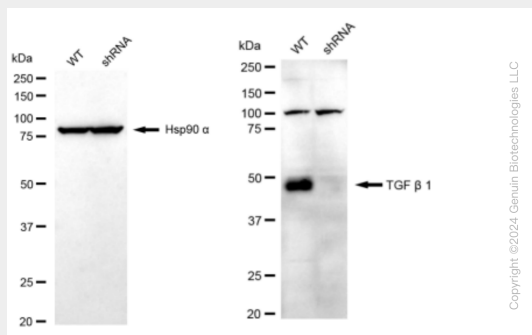
Provided below are standard protocols that you may find useful for product applications.

- [Western Blot](#)
- [Blocking Peptides](#)
- [Dot Blot](#)
- [Immunohistochemistry](#)
- [Immunofluorescence](#)
- [Immunoprecipitation](#)
- [Flow Cytometry](#)
- [Cell Culture](#)

### KD-Validated Anti-TGF beta 1 Rabbit Monoclonal Antibody - Images



Western blotting analysis using anti-TGF beta 1 antibody (Cat#AGI1489). Total cell lysates (30 µg) from various cell lines were loaded and separated by SDS-PAGE. The blot was incubated with anti-TGF beta 1 antibody (Cat#AGI1489, 1:5,000) and HRP-conjugated goat anti-rabbit secondary antibody respectively.



Western blotting analysis using anti-TGF beta 1 antibody (Cat#AGI1489). TGF beta 1 expression

in wild type (WT) and TGF beta 1 shRNA knockdown (KD) HeLa cells with 30 µg of total cell lysates. Hsp90 α serves as a loading control. The blot was incubated with anti-TGF beta 1 antibody (Cat#AG11489, 1:5,000) and HRP-conjugated goat anti-rabbit secondary antibody respectively.