

KD-Validated Anti-CD276 Rabbit Monoclonal Antibody
Rabbit monoclonal antibody
Catalog # AGI1498**Specification**

KD-Validated Anti-CD276 Rabbit Monoclonal Antibody - Product Information

Application	WB, FC, ICC
Primary Accession	Q5ZPR3
Reactivity	Human
Clonality	Monoclonal
Isotype	Rabbit IgG
Calculated MW	Predicted, 57 kDa , observed, 100 kDa
Gene Name	CD276
Aliases	CD276; CD276 Molecule; B7-H3; B7H3; CD276 Antigen; B7RP-2; Costimulatory Molecule; B7 Homolog 3; 4Ig-B7-H3
Immunogen	A synthesized peptide derived from human CD276

KD-Validated Anti-CD276 Rabbit Monoclonal Antibody - Additional Information

Gene ID	80381
Other Names	CD276 antigen, 4Ig-B7-H3, B7 homolog 3, B7-H3, Costimulatory molecule, CD276, CD276, B7H3

KD-Validated Anti-CD276 Rabbit Monoclonal Antibody - Protein Information**Name** CD276**Synonyms** B7H3**Function**

May participate in the regulation of T-cell-mediated immune response. May play a protective role in tumor cells by inhibiting natural-killer mediated cell lysis as well as a role of marker for detection of neuroblastoma cells. May be involved in the development of acute and chronic transplant rejection and in the regulation of lymphocytic activity at mucosal surfaces. Could also play a key role in providing the placenta and fetus with a suitable immunological environment throughout pregnancy. Both isoform 1 and isoform 2 appear to be redundant in their ability to modulate CD4 T-cell responses. Isoform 2 is shown to enhance the induction of cytotoxic T-cells and selectively stimulates interferon gamma production in the presence of T-cell receptor signaling.

Cellular Location

Membrane; Single-pass type I membrane protein

Tissue Location

Ubiquitous but not detectable in peripheral blood lymphocytes or granulocytes. Weakly expressed

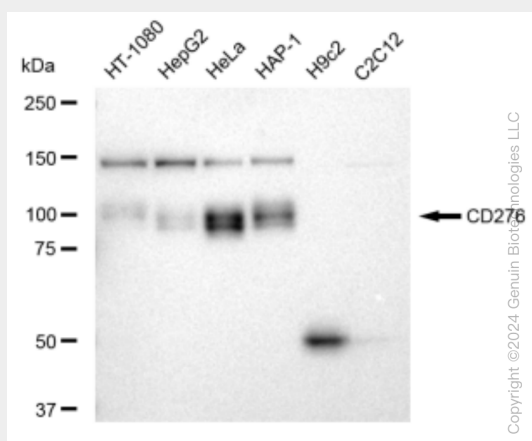
in resting monocytes Expressed in dendritic cells derived from monocytes. Expressed in epithelial cells of sinonasal tissue. Expressed in extravillous trophoblast cells and Hofbauer cells of the first trimester placenta and term placenta.

KD-Validated Anti-CD276 Rabbit Monoclonal Antibody - Protocols

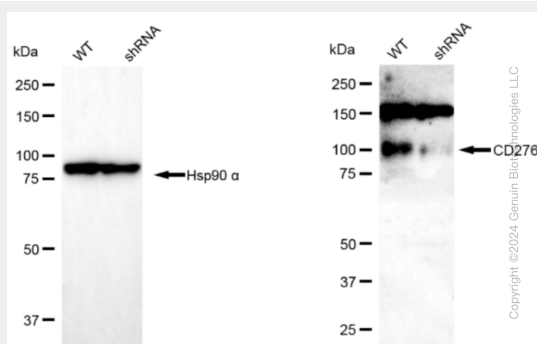
Provided below are standard protocols that you may find useful for product applications.

- [Western Blot](#)
- [Blocking Peptides](#)
- [Dot Blot](#)
- [Immunohistochemistry](#)
- [Immunofluorescence](#)
- [Immunoprecipitation](#)
- [Flow Cytometry](#)
- [Cell Culture](#)

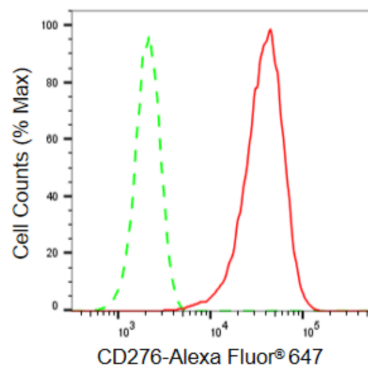
KD-Validated Anti-CD276 Rabbit Monoclonal Antibody - Images



Western blotting analysis using anti-CD276 antibody (Cat#AGI1498). Total cell lysates (30 µg) from various cell lines were loaded and separated by SDS-PAGE. The blot was incubated with anti-CD276 antibody (Cat#AGI1498, 1:5,000) and HRP-conjugated goat anti-rabbit secondary antibody respectively.

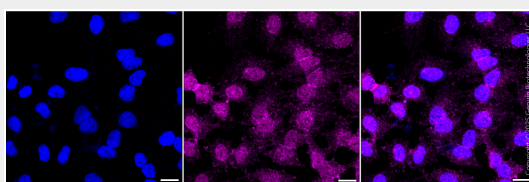


Western blotting analysis using anti-CD276 antibody (Cat#AGI1498). CD276 expression in wild type (WT) and CD276 shRNA knockdown (KD) HeLa cells with 30 µg of total cell lysates. β-Tubulin serves as a loading control. The blot was incubated with anti-CD276 antibody (Cat#AGI1498, 1:5,000) and HRP-conjugated goat anti-rabbit secondary antibody respectively.



Copyright ©2024 Genun Biotechnologies LLC

Flow cytometric analysis of CD276 expression in HeLa cells using CD276 antibody (Cat#AGI1498, 1:2,000). Green, isotype control; red, CD276.



Immunocytochemical staining of HeLa cells with anti-CD276 antibody (Cat #AGI1498, 1:1,000). Nuclei were stained blue with DAPI; CD276 was stained magenta with Alexa Fluor® 647. Images were taken using Leica stellaris 5. Protein abundance based on laser Intensity and smart gain: Low. Scale bar, 20 μ m.