

KD-Validated Anti-Desmocollin 1 Rabbit Monoclonal Antibody
Rabbit monoclonal antibody
Catalog # AGI1507**Specification**

KD-Validated Anti-Desmocollin 1 Rabbit Monoclonal Antibody - Product Information

Application	WB
Primary Accession	Q08554
Reactivity	Rat, Human, Mouse
Clonality	Monoclonal
Isotype	Rabbit IgG
Calculated MW	Predicted, 100 kDa , observed, 100 kDa
Gene Name	KDa
Aliases	DSC1
	DSC1; Desmocollin 1; CDHF1; Desmosomal Glycoprotein 2/3; Cadherin Family Member 1; Desmocollin-1; DG2/DG3
Immunogen	A synthesized peptide derived from human Desmocollin 1

KD-Validated Anti-Desmocollin 1 Rabbit Monoclonal Antibody - Additional Information

Gene ID	1823
Other Names	
Desmocollin-1, Cadherin family member 1, Desmosomal glycoprotein 2/3, DG2/DG3, DSC1, CDHF1	

KD-Validated Anti-Desmocollin 1 Rabbit Monoclonal Antibody - Protein Information**Name** DSC1**Synonyms** CDHF1**Function**

A component of desmosome cell-cell junctions which are required for positive regulation of cellular adhesion (By similarity). Required for desmosome adhesion strength between the granular layers of the epidermis, as a result moderates epidermal proliferation and differentiation (By similarity). Is therefore required to maintain postnatal epidermal barrier function and normal hair follicle morphology into adulthood (By similarity).

Cellular Location

Cell membrane; Single-pass type I membrane protein. Cell junction, desmosome {ECO:0000250|UniProtKB:P55849}

Tissue Location

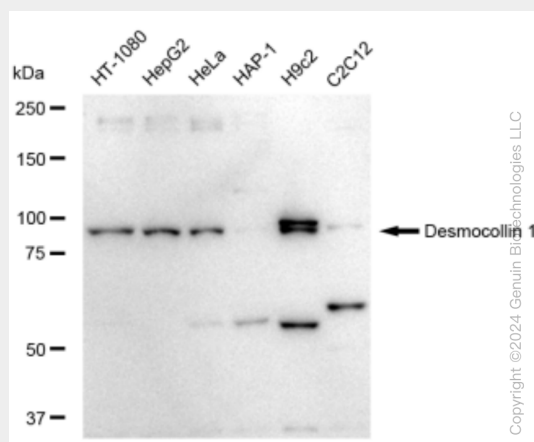
Strongly expressed in epidermis, less in lymph node and tongue.

KD-Validated Anti-Desmocollin 1 Rabbit Monoclonal Antibody - Protocols

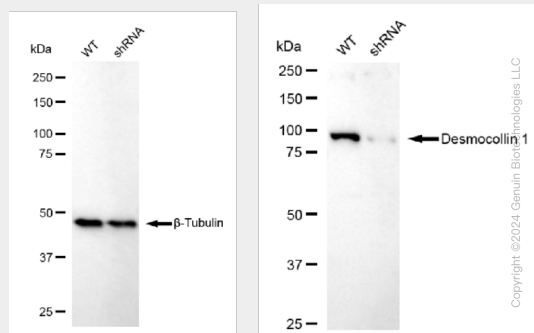
Provided below are standard protocols that you may find useful for product applications.

- [Western Blot](#)
- [Blocking Peptides](#)
- [Dot Blot](#)
- [Immunohistochemistry](#)
- [Immunofluorescence](#)
- [Immunoprecipitation](#)
- [Flow Cytometry](#)
- [Cell Culture](#)

KD-Validated Anti-Desmocollin 1 Rabbit Monoclonal Antibody - Images



Western blotting analysis using anti-Desmocollin 1 antibody (Cat#AGI1507). Total cell lysates (30 µg) from various cell lines were loaded and separated by SDS-PAGE. The blot was incubated with anti-Desmocollin 1 antibody (Cat#AGI1507, 1:5,000) and HRP-conjugated goat anti-rabbit secondary antibody respectively.



Western blotting analysis using anti-Desmocollin 1 antibody (Cat#AGI1507). Desmocollin 1 expression in wild type (WT) and Desmocollin 1 shRNA knockdown (KD) HeLa cells with 30 µg of total cell lysates. β-Tubulin serves as a loading control. The blot was incubated with anti-Desmocollin 1 antibody (Cat#AGI1507, 1:5,000) and HRP-conjugated goat anti-rabbit secondary antibody respectively.