

**KD-Validated Anti-Early endosome antigen 1 Rabbit Monoclonal Antibody**  
**Rabbit monoclonal antibody**  
**Catalog # AGI1513****Specification**

---

**KD-Validated Anti-Early endosome antigen 1 Rabbit Monoclonal Antibody - Product Information**

Application	WB, FC
Primary Accession	<a href="#">Q15075</a>
Reactivity	Rat, Human, Mouse
Clonality	Monoclonal
Isotype	Rabbit IgG
Calculated MW	Predicted, 162 kDa, observed, 148 kDa
Gene Name	EEA1
Aliases	EEA1; Early Endosome Antigen 1; ZFYVE2; Zinc Finger FYVE Domain-Containing Protein; Endosome-Associated Protein P162; Early Endosome Antigen 1, 162kD; Early Endosome-Associated Protein; MSTP105; MST105
Immunogen	A synthesized peptide derived from human EEA1

**KD-Validated Anti-Early endosome antigen 1 Rabbit Monoclonal Antibody - Additional Information**

Gene ID	8411
<b>Other Names</b>	
Early endosome antigen 1, Endosome-associated protein p162, Zinc finger FYVE domain-containing protein 2, EEA1, ZFYVE2	

**KD-Validated Anti-Early endosome antigen 1 Rabbit Monoclonal Antibody - Protein Information****Name** EEA1**Synonyms** ZFYVE2**Function**

Binds phospholipid vesicles containing phosphatidylinositol 3-phosphate and participates in endosomal trafficking.

**Cellular Location**

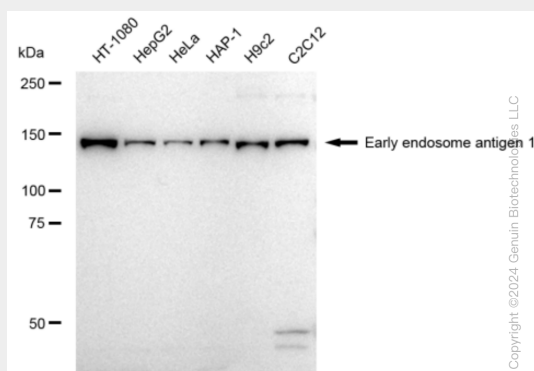
Cytoplasm. Early endosome membrane; Peripheral membrane protein

## KD-Validated Anti-Early endosome antigen 1 Rabbit Monoclonal Antibody - Protocols

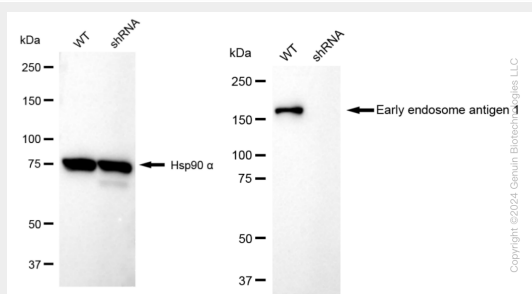
Provided below are standard protocols that you may find useful for product applications.

- [Western Blot](#)
- [Blocking Peptides](#)
- [Dot Blot](#)
- [Immunohistochemistry](#)
- [Immunofluorescence](#)
- [Immunoprecipitation](#)
- [Flow Cytometry](#)
- [Cell Culture](#)

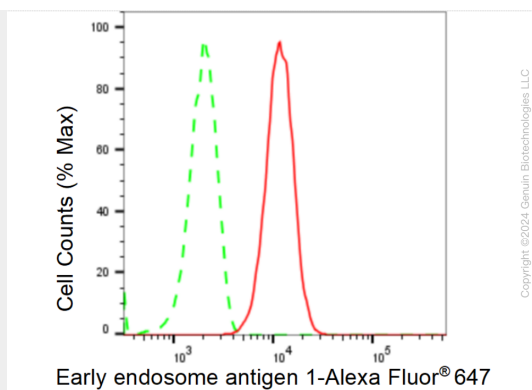
## KD-Validated Anti-Early endosome antigen 1 Rabbit Monoclonal Antibody - Images



Western blotting analysis using anti-Early endosome antigen 1 antibody (Cat#AGI1513). Total cell lysates (30 µg) from various cell lines were loaded and separated by SDS-PAGE. The blot was incubated with anti-Early endosome antigen 1 antibody (Cat#AGI1513, 1:5,000) and HRP-conjugated goat anti-rabbit secondary antibody respectively.



Western blotting analysis using anti-Early endosome antigen 1 antibody (Cat#AGI1513). Early endosome antigen 1 expression in wild type (WT) and Early endosome antigen 1 shRNA knockdown (KD) HT-1080 cells with 30 µg of total cell lysates. Hsp90 α serves as a loading control. The blot was incubated with anti-Early endosome antigen 1 antibody (Cat#AGI1513, 1:5,000) and HRP-conjugated goat anti-rabbit secondary antibody respectively.



Flow cytometric analysis of Early endosome antigen 1 expression in HT-1080 cells using Early endosome antigen 1 antibody (Cat#AGI1513, 1:2,000). Green, isotype control; red, Early endosome antigen 1.