

**KD-Validated Anti-ELP4 Rabbit Monoclonal Antibody**  
**Rabbit monoclonal antibody**  
**Catalog # AGI1516****Specification****KD-Validated Anti-ELP4 Rabbit Monoclonal Antibody - Product Information**

Application	WB, FC
Primary Accession	<a href="#">Q96EB1</a>
Reactivity	Rat, Human, Mouse
Clonality	Monoclonal
Isotype	Rabbit IgG
Calculated MW	Predicted, 47 kDa , observed, 46 kDa KDa
Gene Name	ELP4
Aliases	ELP4; Elongator Acetyltransferase Complex Subunit 4; PAXNEB; Elongator Complex Protein 4; PAX6 Neighbor Gene Protein; C11orf19; HELP4; Elongation Protein 4 Homolog (S. Cerevisiae); Chromosome 11 Open Reading Frame 19; Elongation Protein 4 Homolog; DJ68P15A.1; C11ORF19; PAX6NEB; AN2; AN
Immunogen	A synthesized peptide derived from human ELP4

**KD-Validated Anti-ELP4 Rabbit Monoclonal Antibody - Additional Information**

Gene ID	26610
<b>Other Names</b>	
Elongator complex protein 4, hELP4, PAX6 neighbor gene protein, ELP4, C11orf19, PAXNEB	

**KD-Validated Anti-ELP4 Rabbit Monoclonal Antibody - Protein Information****Name** ELP4**Synonyms** C11orf19, PAXNEB**Function**

Component of the elongator complex which is required for multiple tRNA modifications, including mcm5U (5-methoxycarbonylmethyl uridine), mcm5s2U (5-methoxycarbonylmethyl-2-thiouridine), and ncm5U (5-carbamoylmethyl uridine) (PubMed:<<http://www.uniprot.org/citations/29332244>>29332244</a>). The elongator complex catalyzes the formation of carboxymethyluridine in the wobble base at position 34 in tRNAs (PubMed:<<http://www.uniprot.org/citations/29332244>>29332244</a>).

**Cellular Location**

Cytoplasm. Nucleus

## Tissue Location

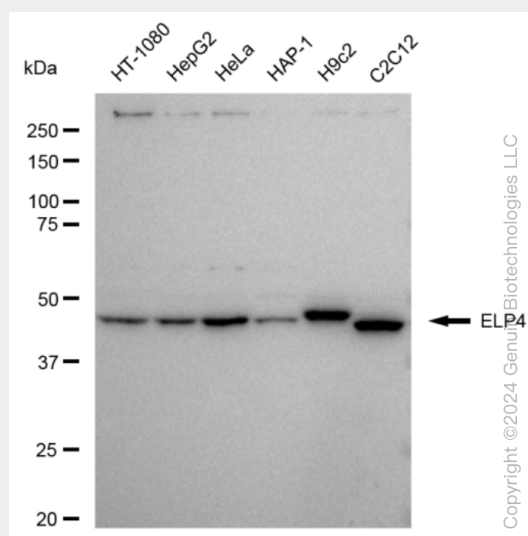
Widely expressed..

## KD-Validated Anti-ELP4 Rabbit Monoclonal Antibody - Protocols

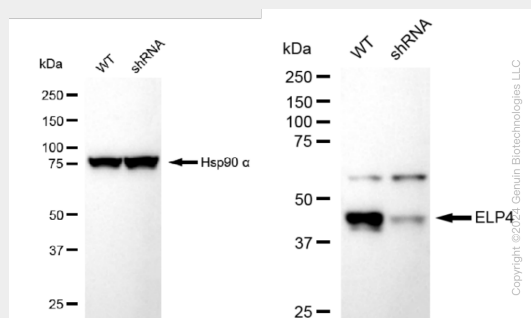
Provided below are standard protocols that you may find useful for product applications.

- [Western Blot](#)
- [Blocking Peptides](#)
- [Dot Blot](#)
- [Immunohistochemistry](#)
- [Immunofluorescence](#)
- [Immunoprecipitation](#)
- [Flow Cytometry](#)
- [Cell Culture](#)

## KD-Validated Anti-ELP4 Rabbit Monoclonal Antibody - Images

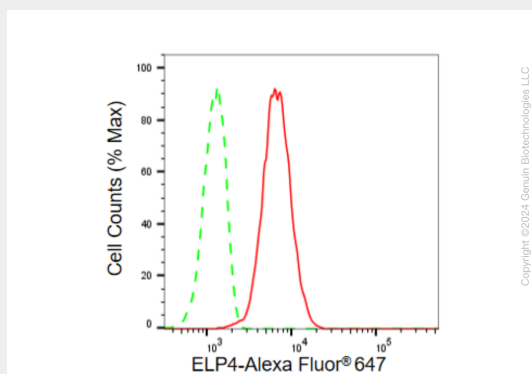


Western blotting analysis using anti-ELP4 antibody (Cat#AGI1516). Total cell lysates (30 µg) from various cell lines were loaded and separated by SDS-PAGE. The blot was incubated with anti-ELP4 antibody (Cat#AGI1516, 1:5,000) and HRP-conjugated goat anti-rabbit secondary antibody respectively.



Western blotting analysis using anti-ELP4 antibody (Cat#AGI1516). ELP4 expression in wild type (WT) and ELP4 shRNA knockdown (KD) HeLa cells with 30 µg of total cell lysates. Hsp90 α serves as a loading control. The blot was incubated with anti-ELP4 antibody (Cat#AGI1516, 1:5,000) and

HRP-conjugated goat anti-rabbit secondary antibody respectively.



Flow cytometric analysis of ELP4 expression in C2C12 cells using ELP4 antibody (Cat#AGI1516, 1:2,000). Green, isotype control; red, ELP4.