

KD-Validated Anti-Aminopeptidase A / CD249 Rabbit Monoclonal Antibody
Rabbit monoclonal antibody
Catalog # AGI1518**Specification**

KD-Validated Anti-Aminopeptidase A / CD249 Rabbit Monoclonal Antibody - Product Information

Application	WB, ICC
Primary Accession	Q07075
Reactivity	Rat, Human, Mouse
Clonality	Monoclonal
Isotype	Rabbit IgG
Calculated MW	Predicted, 109 kDa, observed, 250kDa KDa
Gene Name	ENPEP
Aliases	ENPEP; Glutamyl Aminopeptidase; CD249; Differentiation Antigen Gp160; Aminopeptidase A; EC 3.4.11.7; Gp160; AP-A; EAP; Glutamyl Aminopeptidase (Aminopeptidase A); CD249 Antigen; EC 3.4.11; GP160; APA
Immunogen	A synthesized peptide derived from human Aminopeptidase A / CD249

KD-Validated Anti-Aminopeptidase A / CD249 Rabbit Monoclonal Antibody - Additional Information

Gene ID	2028
Other Names	
Glutamyl aminopeptidase, EAP, 3.4.11.7, Aminopeptidase A, AP-A, Differentiation antigen gp160, CD249, ENPEP	

KD-Validated Anti-Aminopeptidase A / CD249 Rabbit Monoclonal Antibody - Protein Information**Name** ENPEP**Function**

Regulates central hypertension through its calcium-modulated preference to cleave N-terminal acidic residues from peptides such as angiotensin II.

Cellular Location

Cell membrane; Single-pass type II membrane protein

Tissue Location

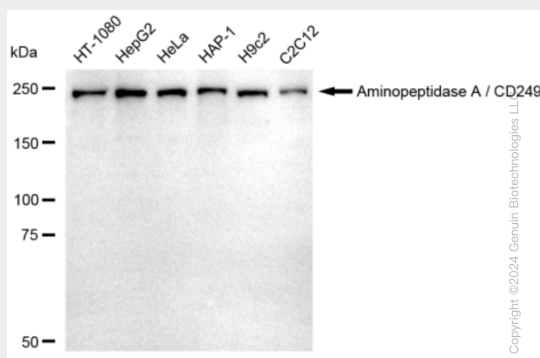
Expressed in choriocarcinoma cancer cell lines (at protein level) (PubMed:10692253). Expressed by epithelial cells of the proximal tubule cells and the glomerulus of the nephron. Also found in a variety of other tissues.

KD-Validated Anti-Aminopeptidase A / CD249 Rabbit Monoclonal Antibody - Protocols

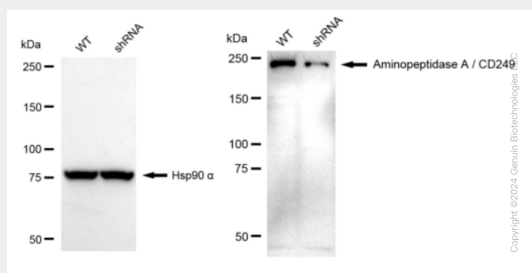
Provided below are standard protocols that you may find useful for product applications.

- [Western Blot](#)
- [Blocking Peptides](#)
- [Dot Blot](#)
- [Immunohistochemistry](#)
- [Immunofluorescence](#)
- [Immunoprecipitation](#)
- [Flow Cytometry](#)
- [Cell Culture](#)

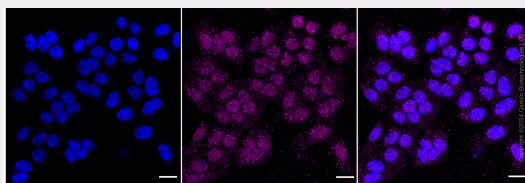
KD-Validated Anti-Aminopeptidase A / CD249 Rabbit Monoclonal Antibody - Images



Western blotting analysis using anti-Aminopeptidase A / CD249 antibody (Cat#AGI1518). Total cell lysates (30 µg) from various cell lines were loaded and separated by SDS-PAGE. The blot was incubated with anti-Aminopeptidase A / CD249 antibody (Cat#AGI1518, 1:5,000) and HRP-conjugated goat anti-rabbit secondary antibody respectively.



Western blotting analysis using anti-Aminopeptidase A / CD249 antibody (Cat#AGI1518). Aminopeptidase A / CD249 expression in wild type (WT) and Aminopeptidase A / CD249 shRNA knockdown (KD) HeLa cells with 30 µg of total cell lysates. Hsp90 α serves as a loading control. The blot was incubated with anti-Aminopeptidase A / CD249 antibody (Cat#AGI1518, 1:5,000) and HRP-conjugated goat anti-rabbit secondary antibody respectively.



Immunocytochemical staining of HepG2 cells with anti-aminopeptidase A / CD249 antibody

(Cat#AGI1518, 1:1,000). Nuclei were stained blue with DAPI; Aminopeptidase A / CD249 was stained magenta with Alexa Fluor® 647. Images were taken using Leica stellaris 5. Protein abundance based on laser Intensity and smart gain: Medium. Scale bar: 20 μ m.