

**KD-Validated Anti-Galactosidase alpha Rabbit Monoclonal Antibody**  
**Rabbit monoclonal antibody**  
**Catalog # AGI1523****Specification**

---

**KD-Validated Anti-Galactosidase alpha Rabbit Monoclonal Antibody - Product Information**

Application	WB, FC
Primary Accession	<a href="#">P06280</a>
Reactivity	Human
Clonality	Monoclonal
Isotype	Rabbit IgG
Calculated MW	Predicted, 49 kDa , observed, 46 kDa KDa
Gene Name	GLA
Aliases	GLA; Galactosidase Alpha; GALA; Galactosylgalactosylglucosylceramidase GLA; Alpha-D-Galactosidase A; Alpha-Galactosidase A; EC 3.2.1.22; Melibiase; Alpha-D-Galactoside Galactohydrolase 1; Alpha-D-Galactoside Galactohydrolase; Agalsidase Alfa; Alpha-Gal A; Agalsidase; EC 3.2.1
Immunogen	A synthesized peptide derived from human Galactosidase alpha

**KD-Validated Anti-Galactosidase alpha Rabbit Monoclonal Antibody - Additional Information**

Gene ID	2717
<b>Other Names</b>	Alpha-galactosidase A, 3.2.1.22, Alpha-D-galactosidase A, Alpha-D-galactoside galactohydrolase, Galactosylgalactosylglucosylceramidase GLA, Melibiase, Agalsidase, GLA (<a href="http://www.genenames.org/cgi-bin/gene_symbol_report?hgnc_id=4296" target="_blank">HGNC:4296</a>)

**KD-Validated Anti-Galactosidase alpha Rabbit Monoclonal Antibody - Protein Information****Name** GLA ([HGNC:4296](#))**Function**

Catalyzes the hydrolysis of glycosphingolipids and participates in their degradation in the lysosome.

**Cellular Location**

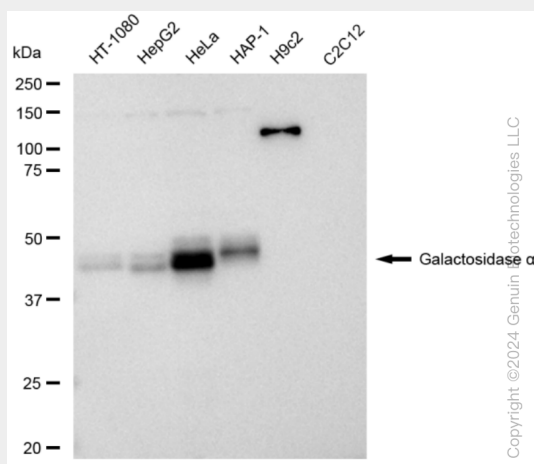
Lysosome.

## KD-Validated Anti-Galactosidase alpha Rabbit Monoclonal Antibody - Protocols

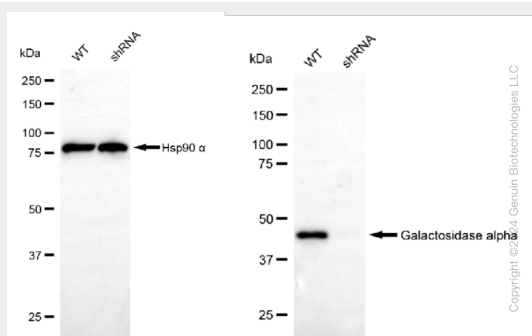
Provided below are standard protocols that you may find useful for product applications.

- [Western Blot](#)
- [Blocking Peptides](#)
- [Dot Blot](#)
- [Immunohistochemistry](#)
- [Immunofluorescence](#)
- [Immunoprecipitation](#)
- [Flow Cytometry](#)
- [Cell Culture](#)

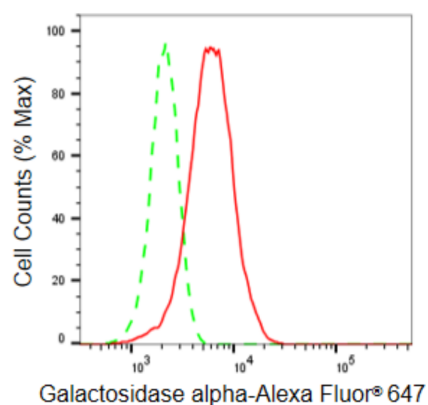
## KD-Validated Anti-Galactosidase alpha Rabbit Monoclonal Antibody - Images



Western blotting analysis using anti-Galactosidase alpha antibody (Cat#AGI1523). Total cell lysates (30 µg) from various cell lines were loaded and separated by SDS-PAGE. The blot was incubated with anti-Galactosidase alpha antibody (Cat#AGI1523, 1:5,000) and HRP-conjugated goat anti-rabbit secondary antibody respectively.



Western blotting analysis using anti-Galactosidase alpha antibody (Cat#AGI1523). Galactosidase alpha expression in wild type (WT) and Galactosidase alpha shRNA knockdown (KD) HeLa cells with 30 µg of total cell lysates. Hsp90 alpha serves as a loading control. The blot was incubated with anti-Galactosidase alpha antibody (Cat#AGI1523, 1:5,000) and HRP-conjugated goat anti-rabbit secondary antibody respectively.



Flow cytometric analysis of Galactosidase alpha expression in HeLa cells using Galactosidase alpha antibody (Cat#AGI1523, 1:2,000). Green, isotype control; red, Galactosidase alpha.