

KD-Validated Anti-Glucose 6 phosphate isomerase Rabbit Monoclonal Antibody
Rabbit monoclonal antibody
Catalog # AGI1529**Specification****KD-Validated Anti-Glucose 6 phosphate isomerase Rabbit Monoclonal Antibody - Product Information**

Application	WB, FC
Primary Accession	P06744
Reactivity	Human
Clonality	Monoclonal
Isotype	Rabbit IgG
Calculated MW	Predicted, 63 kDa , observed, 63 kDa
Gene Name	KDa
Aliases	GPI GPI; Glucose-6-Phosphate Isomerase; AMF; NLK; Autocrine Motility Factor; Phosphoglucose Isomerase; Phosphohexose Isomerase; Neuroleukin; EC 5.3.1.9; SA-36; PGI; PHI; Hexose Monophosphate Isomerase; Glucose Phosphate Isomerase; Hexosephosphate Isomerase; Phosphosaccharomutase; Phosphohexomutase; Sperm Antigen-36; Sperm Antigen 36; Oxoisomerase; GNPI; SA36
Immunogen	A synthesized peptide derived from human Glucose 6 phosphate isomerase

KD-Validated Anti-Glucose 6 phosphate isomerase Rabbit Monoclonal Antibody - Additional Information

Gene ID 2821

Other Names

Glucose-6-phosphate isomerase, GPI, 5.3.1.9, Autocrine motility factor, AMF, Neuroleukin, NLK, Phosphoglucose isomerase, PGI, Phosphohexose isomerase, PHI, Sperm antigen 36, SA-36, GPI {ECO:0000303|PubMed:2387591, ECO:0000312|HGNC:HGNC:4458}

KD-Validated Anti-Glucose 6 phosphate isomerase Rabbit Monoclonal Antibody - Protein Information**Name** GPI {ECO:0000303|PubMed:2387591, ECO:0000312|HGNC:HGNC:4458}**Function**

In the cytoplasm, catalyzes the conversion of glucose-6- phosphate to fructose-6-phosphate, the second step in glycolysis, and the reverse reaction during gluconeogenesis (PubMed:28803808). Besides it's role as a glycolytic enzyme, also acts as a secreted cytokine: acts as an angiogenic factor (AMF) that stimulates endothelial cell motility (PubMed:11437381). Acts as a neurotrophic factor, neuroleukin, for spinal and sensory neurons (PubMed:11004567, PubMed:3352745). It is secreted by lectin-stimulated T-cells and induces immunoglobulin secretion (PubMed:11004567, PubMed:3352745).

Cellular Location

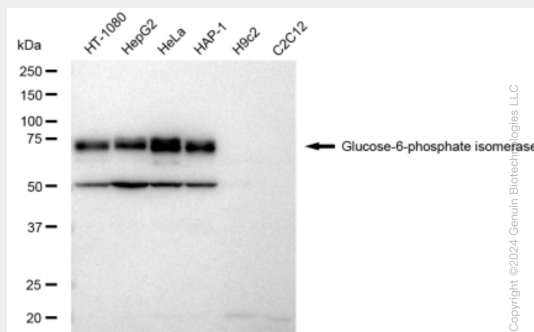
Cytoplasm. Secreted

KD-Validated Anti-Glucose 6 phosphate isomerase Rabbit Monoclonal Antibody - Protocols

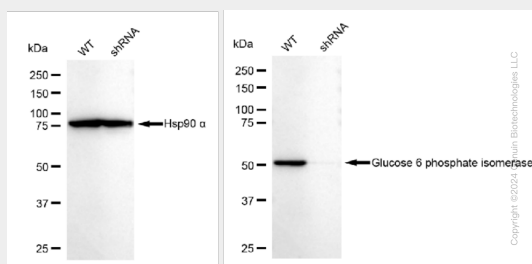
Provided below are standard protocols that you may find useful for product applications.

- [Western Blot](#)
- [Blocking Peptides](#)
- [Dot Blot](#)
- [Immunohistochemistry](#)
- [Immunofluorescence](#)
- [Immunoprecipitation](#)
- [Flow Cytometry](#)
- [Cell Culture](#)

KD-Validated Anti-Glucose 6 phosphate isomerase Rabbit Monoclonal Antibody - Images

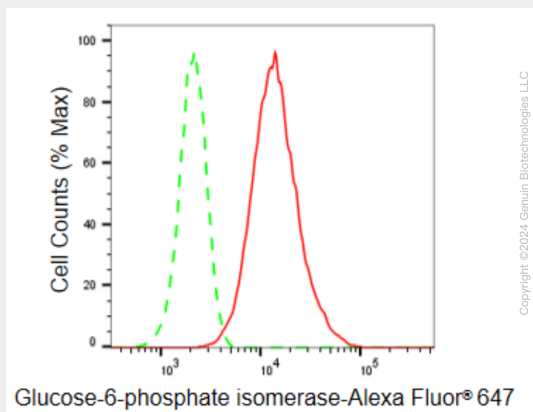


Western blotting analysis using anti-Glucose-6-phosphate isomerase antibody (Cat#AGI1529). Total cell lysates (30 µg) from various cell lines were loaded and separated by SDS-PAGE. The blot was incubated with anti-Glucose-6-phosphate isomerase antibody (Cat#AGI1529, 1:5,000) and HRP-conjugated goat anti-rabbit secondary antibody respectively.



Western blotting analysis using anti-Glucose 6 phosphate isomerase antibody (Cat#AGI1529). Glucose 6 phosphate isomerase expression in wild type (WT) and Glucose 6 phosphate isomerase shRNA knockdown (KD) HeLa cells with 30 µg of total cell lysates. Hsp90 α serves as a loading

control. The blot was incubated with anti-Glucose 6 phosphate isomerase antibody (Cat#AGI1529, 1:5,000) and HRP-conjugated goat anti-rabbit secondary antibody respectively.



Flow cytometric analysis of Glucose-6-phosphate isomerase expression in HeLa cells using Glucose-6-phosphate isomerase antibody (Cat#AGI1529, 1:2,000). Green, isotype control; red, Glucose-6-phosphate isomerase.