

**KD-Validated Anti-Contactin associated protein 1 Rabbit Monoclonal Antibody**  
**Rabbit monoclonal antibody**  
**Catalog # AGI1531****Specification**

---

**KD-Validated Anti-Contactin associated protein 1 Rabbit Monoclonal Antibody - Product Information**

Application	WB, FC
Primary Accession	<a href="#">P78357</a>
Reactivity	Human, Mouse
Clonality	Monoclonal
Isotype	Rabbit IgG
Calculated MW	Predicted, 156 kDa , observed, 165 kDa
Gene Name	KDa
Aliases	CNTNAP1 CNTNAP1; Contactin Associated Protein 1; P190; CNTNAP; CASPR; NRXN4; Contactin-Associated Protein 1; Neurexin IV; Neurexin-4; Caspr1; Caspr; Neurexin 4; CHN3
Immunogen	A synthesized peptide derived from human Caspr

**KD-Validated Anti-Contactin associated protein 1 Rabbit Monoclonal Antibody - Additional Information**

Gene ID	8506
<b>Other Names</b>	
Contactin-associated protein 1, Caspr, Caspr1, Neurexin IV, Neurexin-4, p190, CNTNAP1, CASPR, NRXN4	

**KD-Validated Anti-Contactin associated protein 1 Rabbit Monoclonal Antibody - Protein Information****Name** CNTNAP1**Synonyms** CASPR, NRXN4**Function**

Required, with CNTNAP2, for radial and longitudinal organization of myelinated axons. Plays a role in the formation of functional distinct domains critical for saltatory conduction of nerve impulses in myelinated nerve fibers. Demarcates the paranodal region of the axo-glial junction. In association with contactin involved in the signaling between axons and myelinating glial cells.

**Cellular Location**

Membrane; Single-pass type I membrane protein. Cell junction, paranodal septate junction  
{ECO:0000250|UniProtKB:O54991}

### Tissue Location

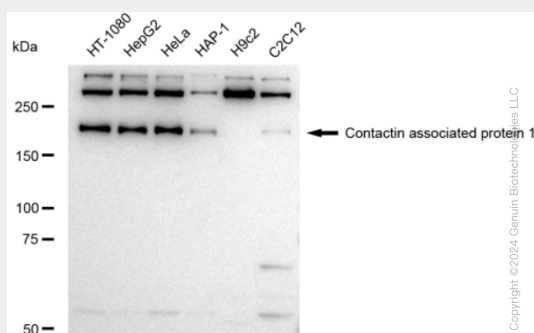
Predominantly expressed in brain. Weak expression detected in ovary, pancreas, colon, lung, heart, intestine and testis

### KD-Validated Anti-Contactin associated protein 1 Rabbit Monoclonal Antibody - Protocols

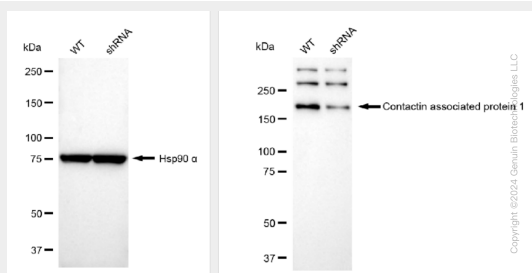
Provided below are standard protocols that you may find useful for product applications.

- [Western Blot](#)
- [Blocking Peptides](#)
- [Dot Blot](#)
- [Immunohistochemistry](#)
- [Immunofluorescence](#)
- [Immunoprecipitation](#)
- [Flow Cytometry](#)
- [Cell Culture](#)

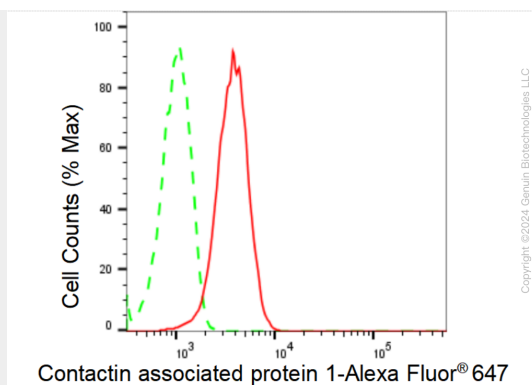
### KD-Validated Anti-Contactin associated protein 1 Rabbit Monoclonal Antibody - Images



Western blotting analysis using anti-Contactin associated protein 1 antibody (Cat#AGI1531). Total cell lysates (30 µg) from various cell lines were loaded and separated by SDS-PAGE. The blot was incubated with anti-Contactin associated protein 1 antibody (Cat#AGI1531, 1:5,000) and HRP-conjugated goat anti-rabbit secondary antibody respectively.



Western blotting analysis using anti-Contactin associated protein 1 antibody (Cat#AGI1531). Contactin associated protein 1 expression in wild type (WT) and Contactin associated protein 1 shRNA knockdown (KD) HT-1080 cells with 30 µg of total cell lysates. Hsp90 α serves as a loading control. The blot was incubated with anti-Contactin associated protein 1 antibody (Cat#AGI1531, 1:5,000) and HRP-conjugated goat anti-rabbit secondary antibody respectively.



Flow cytometric analysis of Contactin associated protein 1 expression in HepG2 cells using Contactin associated protein 1 antibody (Cat#AGI1531, 1:2,000). Green, isotype control; red, Contactin associated protein 1.