

KD-Validated Anti-CDT1 Rabbit Monoclonal Antibody
Rabbit monoclonal antibody
Catalog # AGI1540**Specification****KD-Validated Anti-CDT1 Rabbit Monoclonal Antibody - Product Information**

Application	WB
Primary Accession	Q9H211
Reactivity	Human
Clonality	Monoclonal
Isotype	Rabbit IgG
Calculated MW	Predicted, 60 kDa , observed , 60 kDa KDa
Gene Name	CDT1
Aliases	CDT1; Chromatin Licensing And DNA Replication Factor 1; DUP; RIS2; DNA Replication Factor Cdt1; Double Parked, Drosophila, Homolog Of; Double Parked Homolog
Immunogen	A synthesized peptide derived from human CDT1

KD-Validated Anti-CDT1 Rabbit Monoclonal Antibody - Additional Information

Gene ID	81620
Other Names	
DNA replication factor Cdt1, Double parked homolog, DUP, CDT1 {ECO:0000312 EMBL:AAG45181.1}	

KD-Validated Anti-CDT1 Rabbit Monoclonal Antibody - Protein Information**Name** CDT1 {ECO:0000312|EMBL:AAG45181.1}**Function**

Required for both DNA replication and mitosis (PubMed:11125146, PubMed:14993212, PubMed:21856198, PubMed:22581055, PubMed:26842564). DNA replication licensing factor, required for pre- replication complex assembly. Cooperates with CDC6 and the origin recognition complex (ORC) during G1 phase of the cell cycle to promote the loading of the mini-chromosome maintenance (MCM) complex onto DNA to generate pre-replication complexes (pre-RC) (PubMed:14672932). Required also for mitosis by promoting stable kinetochore-microtubule attachments (PubMed:22581055). Potential oncogene (By similarity).

Cellular Location

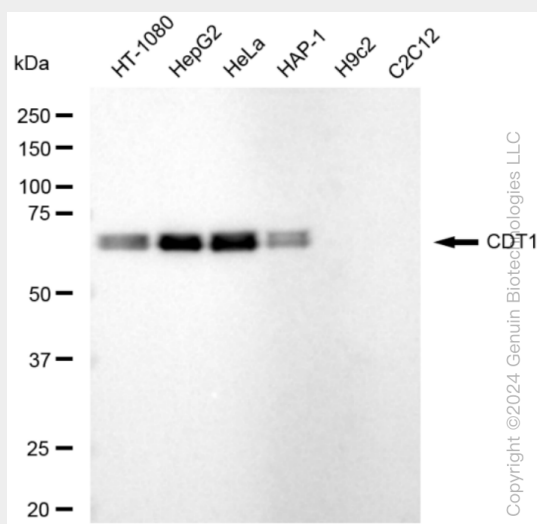
Nucleus. Chromosome, centromere, kinetochore. Note=Transiently localizes to kinetochores during prometaphase and metaphase

KD-Validated Anti-CDT1 Rabbit Monoclonal Antibody - Protocols

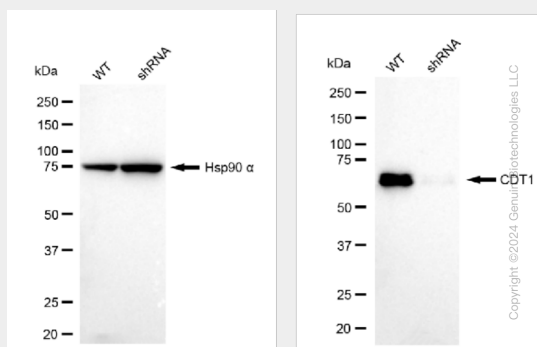
Provided below are standard protocols that you may find useful for product applications.

- [Western Blot](#)
- [Blocking Peptides](#)
- [Dot Blot](#)
- [Immunohistochemistry](#)
- [Immunofluorescence](#)
- [Immunoprecipitation](#)
- [Flow Cytometry](#)
- [Cell Culture](#)

KD-Validated Anti-CDT1 Rabbit Monoclonal Antibody - Images



Western blotting analysis using anti-CDT1 antibody (Cat#AGI1540). Total cell lysates (30 µg) from various cell lines were loaded and separated by SDS-PAGE. The blot was incubated with anti-CDT1 antibody (Cat#AGI1540, 1:5,000) and HRP-conjugated goat anti-rabbit secondary antibody respectively.



Western blotting analysis using anti-CDT1 antibody (Cat#AGI1540). CDT1 expression in wild type (WT) and CDT1 shRNA knockdown (KD) HeLa cells with 30 µg of total cell lysates. Hsp90 α serves

as a loading control. The blot was incubated with anti-CDT1 antibody (Cat#AGI1540, 1:5,000) and HRP-conjugated goat anti-rabbit secondary antibody respectively.