

**KD-Validated Anti-Keratin 10 Rabbit Monoclonal Antibody**  
**Rabbit monoclonal antibody**  
**Catalog # AGI1550****Specification****KD-Validated Anti-Keratin 10 Rabbit Monoclonal Antibody - Product Information**

Application	WB, ICC
Primary Accession	<a href="#">P13645</a>
Reactivity	Rat, Human
Clonality	Monoclonal
Isotype	Rabbit IgG
Calculated MW	Predicted, 59 kDa , observed , 60 kDa KDa
Gene Name	KRT10
Aliases	KRT10; Keratin 10; K10; CK10; KPP; Keratin, Type I Cytoskeletal 10; Keratin 10, Type I; Cytokeratin 10; CK-10; Keratosis Palmaris Et Plantaris; Epidermolytic Hyperkeratosis; Cytokeratin-10; Keratin-10; BCIE; EHK2; BIE; EHK; IHL A synthesized peptide derived from human Cytokeratin 10
Immunogen	

**KD-Validated Anti-Keratin 10 Rabbit Monoclonal Antibody - Additional Information**

Gene ID	3858
<b>Other Names</b>	
Keratin, type I cytoskeletal 10, Cytokeratin-10, CK-10, Keratin-10, K10, KRT10, KPP	

**KD-Validated Anti-Keratin 10 Rabbit Monoclonal Antibody - Protein Information****Name** KRT10**Synonyms** KPP**Function**

Plays a role in the establishment of the epidermal barrier on plantar skin (By similarity). Involved in the maintenance of cell layer development and keratin filament bundles in suprabasal cells of the epithelium (By similarity).

**Cellular Location**

Secreted, extracellular space. Cell surface. Cytoplasm

**Tissue Location**

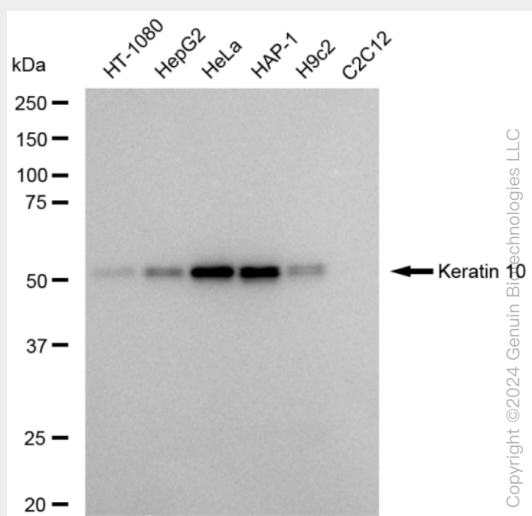
Seen in all suprabasal cell layers including stratum corneum. Expressed on the surface of lung cell lines (PubMed:19627498). Localized on the surface of desquamated nasal epithelial cells (at protein level) (PubMed:12427098)

## KD-Validated Anti-Keratin 10 Rabbit Monoclonal Antibody - Protocols

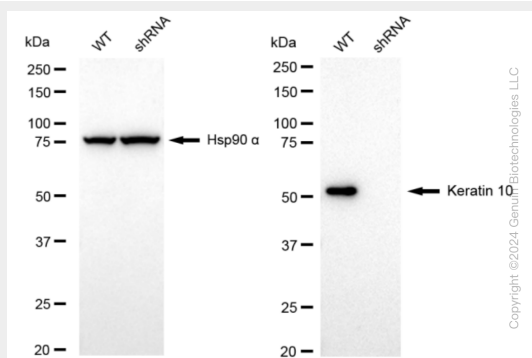
Provided below are standard protocols that you may find useful for product applications.

- [Western Blot](#)
- [Blocking Peptides](#)
- [Dot Blot](#)
- [Immunohistochemistry](#)
- [Immunofluorescence](#)
- [Immunoprecipitation](#)
- [Flow Cytometry](#)
- [Cell Culture](#)

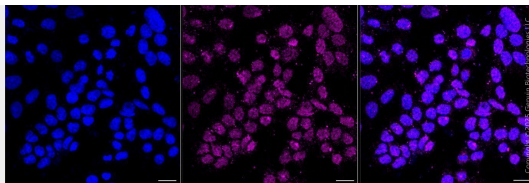
## KD-Validated Anti-Keratin 10 Rabbit Monoclonal Antibody - Images



Western blotting analysis using anti-Keratin 10 antibody (Cat#AGI1550). Total cell lysates (30 µg) from various cell lines were loaded and separated by SDS-PAGE. The blot was incubated with anti-Keratin 10 antibody (Cat#AGI1550, 1:5,000) and HRP-conjugated goat anti-rabbit secondary antibody respectively.



Western blotting analysis using anti-Keratin 10 antibody (Cat#AGI1550). Keratin 10 expression in wild type (WT) and Keratin 10 shRNA knockdown (KD) HeLa cells with 20 µg of total cell lysates. Hsp90 α serves as a loading control. The blot was incubated with anti-Keratin 10 antibody (Cat#AGI1550, 1:5,000) and HRP-conjugated goat anti-rabbit secondary antibody respectively.



Immunocytochemical staining of HAP-1 cells with anti-Keratin 10 antibody (Cat#AGI1550, 1:1,000). Nuclei were stained blue with DAPI; Keratin 10 was stained magenta with Alexa Fluor® 647. Images were taken using Leica stellaris 5. Protein abundance based on laser Intensity and smart gain: Medium. Scale bar, 20  $\mu$ m.