

**KD-Validated Anti-Keratin 4 Rabbit Monoclonal Antibody**  
**Rabbit monoclonal antibody**  
**Catalog # AGI1551****Specification**

---

**KD-Validated Anti-Keratin 4 Rabbit Monoclonal Antibody - Product Information**

Application	WB, FC, ICC
Primary Accession	<a href="#">P19013</a>
Reactivity	Rat, Human, Mouse
Clonality	Monoclonal
Isotype	Rabbit IgG
Calculated MW	Predicted, 56 kDa , observed , 57 kDa KDa
Gene Name	KRT4
Aliases	KRT4; Keratin 4; CYK4; K4; Keratin, Type II Cytoskeletal 4; CK4; Type-II Keratin Kb4; Cytokeratin 4; CK-4; Keratin 4, Type II; Cytokeratin-4; Keratin-4; WSN1
Immunogen	A synthesized peptide derived from human Cytokeratin 4

**KD-Validated Anti-Keratin 4 Rabbit Monoclonal Antibody - Additional Information**

Gene ID	3851
<b>Other Names</b>	
Keratin, type II cytoskeletal 4, Cytokeratin-4, CK-4, Keratin-4, K4, Type-II keratin Kb4, KRT4, CYK4	

**KD-Validated Anti-Keratin 4 Rabbit Monoclonal Antibody - Protein Information****Name** KRT4**Synonyms** CYK4**Tissue Location**

Detected in the suprabasal layer of the stratified epithelium of the esophagus, exocervix, vagina, mouth and lingual mucosa, and in cells and cell clusters in the mucosa and serous gland ducts of the esophageal submucosa (at protein level). Expressed widely in the exocervix and esophageal epithelium, with lowest levels detected in the basal cell layer.

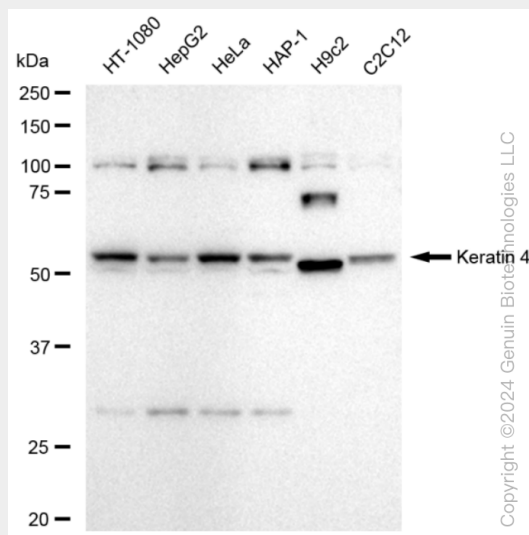
**KD-Validated Anti-Keratin 4 Rabbit Monoclonal Antibody - Protocols**

Provided below are standard protocols that you may find useful for product applications.

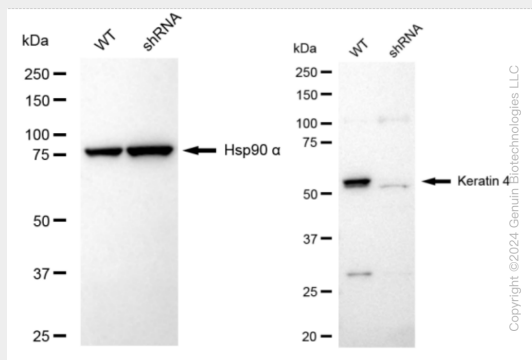
- [Western Blot](#)
- [Blocking Peptides](#)
- [Dot Blot](#)
- [Immunohistochemistry](#)

- [Immunofluorescence](#)
- [Immunoprecipitation](#)
- [Flow Cytometry](#)
- [Cell Culture](#)

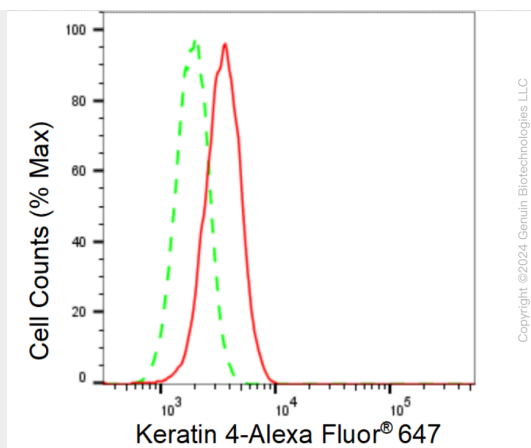
## KD-Validated Anti-Keratin 4 Rabbit Monoclonal Antibody - Images



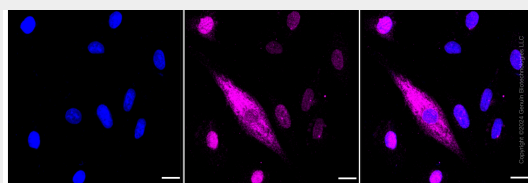
Western blotting analysis using anti-Keratin 4 antibody (Cat#AGI1551). Total cell lysates (30 µg) from various cell lines were loaded and separated by SDS-PAGE. The blot was incubated with anti-Keratin 4 antibody (Cat#AGI1551, 1:5,000) and HRP-conjugated goat anti-rabbit secondary antibody respectively.



Western blotting analysis using anti-Keratin 4 antibody (Cat#AGI1551). Keratin 4 expression in wild type (WT) and Keratin 4 shRNA knockdown (KD) HeLa cells with 20 µg of total cell lysates. Hsp90 α serves as a loading control. The blot was incubated with anti-Keratin 4 antibody (Cat#AGI1551, 1:5,000) and HRP-conjugated goat anti-rabbit secondary antibody respectively.



Flow cytometric analysis of Keratin 4 expression in H9c2 cells using Keratin 4 antibody (Cat#AGI1551, 1:2,000). Green, isotype control; red, Keratin 4.



Immunocytochemical staining of H9C2 cells with anti-Keratin 4 antibody (Cat#AGI1551, 1:1,000). Nuclei were stained blue with DAPI; Keratin 4 was stained magenta with Alexa Fluor® 647. Images were taken using Leica stellaris 5. Protein abundance based on laser Intensity and smart gain: Medium. Scale bar: 20  $\mu$ m.