

**KD-Validated Anti-JUNB Rabbit Monoclonal Antibody**  
**Rabbit monoclonal antibody**  
**Catalog # AGI1553****Specification**

---

**KD-Validated Anti-JUNB Rabbit Monoclonal Antibody - Product Information**

Application	WB, FC, ICC
Primary Accession	<a href="#">P17275</a>
Reactivity	Rat, Human, Mouse
Clonality	Monoclonal
Isotype	Rabbit IgG
Calculated MW	Predicted, 36 kDa , observed , 43 kDa KDa
Gene Name	JUNB
Aliases	JUNB; JunB Proto-Oncogene, AP-1 Transcription Factor Subunit; Transcription Factor AP-1 Subunit JunB; Transcription Factor JunB; Transcription Factor Jun-B; Jun B Proto-Oncogene; Activator Protein 1; AP-1
Immunogen	A synthesized peptide derived from human JunB

**KD-Validated Anti-JUNB Rabbit Monoclonal Antibody - Additional Information**

Gene ID	3726
<b>Other Names</b>	
Transcription factor JunB, Transcription factor AP-1 subunit JunB, JUNB	

**KD-Validated Anti-JUNB Rabbit Monoclonal Antibody - Protein Information****Name** JUNB**Function**

Transcription factor involved in regulating gene activity following the primary growth factor response. Binds to the DNA sequence 5'-TGA[GC]TCA-3'. Heterodimerizes with proteins of the FOS family to form an AP-1 transcription complex, thereby enhancing its DNA binding activity to an AP-1 consensus sequence and its transcriptional activity (By similarity).

**Cellular Location**

Nucleus.

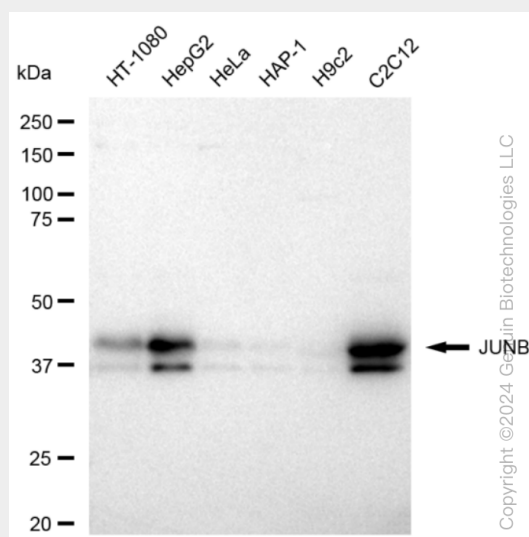
**KD-Validated Anti-JUNB Rabbit Monoclonal Antibody - Protocols**

Provided below are standard protocols that you may find useful for product applications.

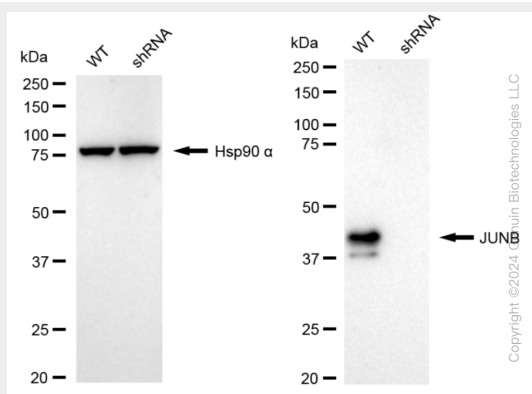
- [Western Blot](#)

- [Blocking Peptides](#)
- [Dot Blot](#)
- [Immunohistochemistry](#)
- [Immunofluorescence](#)
- [Immunoprecipitation](#)
- [Flow Cytometry](#)
- [Cell Culture](#)

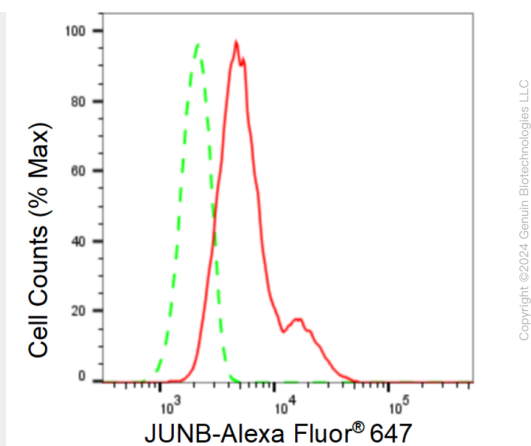
## KD-Validated Anti-JUNB Rabbit Monoclonal Antibody - Images



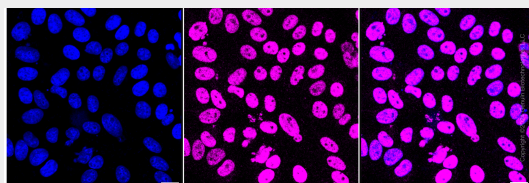
Western blotting analysis using anti-JUNB antibody (Cat#AGI1553). Total cell lysates (30  $\mu$ g) from various cell lines were loaded and separated by SDS-PAGE. The blot was incubated with anti-JUNB antibody (Cat#AGI1553, 1:5,000) and HRP-conjugated goat anti-rabbit secondary antibody respectively.



Western blotting analysis using anti-JunB antibody (Cat#AGI1553). JunB expression in wild type (WT) and JunB shRNA knockdown (KD) HeLa cells with 20  $\mu$ g of total cell lysates. Hsp90  $\alpha$  serves as a loading control. The blot was incubated with anti-JunB antibody (Cat#AGI1553, 1:5,000) and HRP-conjugated goat anti-rabbit secondary antibody respectively.



Flow cytometric analysis of JUNB expression in HepG2 cells using JUNB antibody (Cat#AGI1553, 1:2,000). Green, isotype control; red, JUNB.



Immunocytochemical staining of HepG2 cells with anti-JUNB antibody (Cat#AGI1553, 1:1,000). Nuclei were stained blue with DAPI; JUNB was stained magenta with Alexa Fluor® 647. Images were taken using Leica stellaris 5. Protein abundance based on laser Intensity and smart gain: Medium. Scale bar: 20 µm.