

KD-Validated Anti-Hsp105 Rabbit Monoclonal Antibody
Rabbit monoclonal antibody
Catalog # AGI1554**Specification**

KD-Validated Anti-Hsp105 Rabbit Monoclonal Antibody - Product Information

Application	WB, FC
Primary Accession	Q92598
Reactivity	Rat, Human, Mouse
Clonality	Monoclonal
Isotype	Rabbit IgG
Calculated MW	Predicted, 97 kDa , observed , 105 kDa
Gene Name	KDa
Aliases	HSPH1 HSPH1; Heat Shock Protein Family H (Hsp110) Member 1; KIAA0201; NY-CO-25; HSP105B; HSP105A; Heat Shock 105kDa/110kDa Protein 1; Heat Shock Protein 105 KDa; Antigen NY-CO-25; HSP105; Heat Shock 110 KDa Protein; HSP110
Immunogen	A synthesized peptide derived from human Hsp105

KD-Validated Anti-Hsp105 Rabbit Monoclonal Antibody - Additional Information

Gene ID	10808
Other Names	
Heat shock protein 105 kDa, Antigen NY-CO-25, Heat shock 110 kDa protein, Heat shock protein family H member 1, HSPH1, HSP105, HSP110, KIAA0201	

KD-Validated Anti-Hsp105 Rabbit Monoclonal Antibody - Protein Information**Name** HSPH1**Synonyms** HSP105, HSP110, KIAA0201**Function**

Acts as a nucleotide-exchange factor (NEF) for chaperone proteins HSPA1A and HSPA1B, promoting the release of ADP from HSPA1A/B thereby triggering client/substrate protein release (PubMed:24318877). Prevents the aggregation of denatured proteins in cells under severe stress, on which the ATP levels decrease markedly. Inhibits HSPA8/HSC70 ATPase and chaperone activities (By similarity).

Cellular Location

Cytoplasm.

Tissue Location

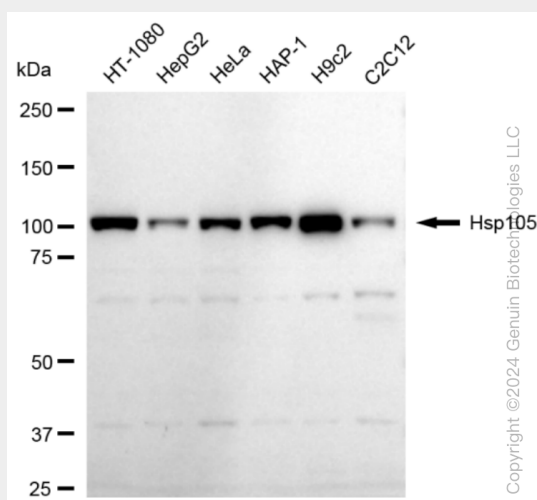
Highly expressed in testis. Present at lower levels in most brain regions, except cerebellum.
Overexpressed in cancer cells.

KD-Validated Anti-Hsp105 Rabbit Monoclonal Antibody - Protocols

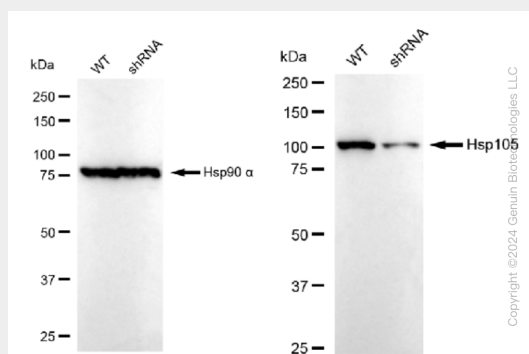
Provided below are standard protocols that you may find useful for product applications.

- [Western Blot](#)
- [Blocking Peptides](#)
- [Dot Blot](#)
- [Immunohistochemistry](#)
- [Immunofluorescence](#)
- [Immunoprecipitation](#)
- [Flow Cytometry](#)
- [Cell Culture](#)

KD-Validated Anti-Hsp105 Rabbit Monoclonal Antibody - Images

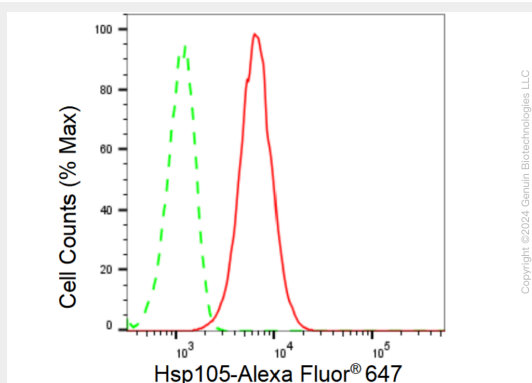


Western blotting analysis using anti-Hsp105 antibody (Cat#AGI1554). Total cell lysates (30 µg) from various cell lines were loaded and separated by SDS-PAGE. The blot was incubated with anti-Hsp105 antibody (Cat#AGI1554, 1:5,000) and HRP-conjugated goat anti-rabbit secondary antibody respectively.



Western blotting analysis using anti-Hsp105 antibody (Cat#AGI1554). Hsp105 expression in wild type (WT) and Hsp105 shRNA knockdown (KD) HeLa cells with 30 µg of total cell lysates. Hsp90 α serves as a loading control. The blot was incubated with anti-Hsp105 antibody (Cat#AGI1554,

1:5,000) and HRP-conjugated goat anti-rabbit secondary antibody respectively.



Flow cytometric analysis of Hsp105 expression in HT-1080 cells using Hsp105 antibody (Cat#AGI1554, 1:2,000). Green, isotype control; red, Hsp105.