

**KD-Validated Anti-Huntingtin Rabbit Monoclonal Antibody**  
**Rabbit monoclonal antibody**  
**Catalog # AGI1560****Specification****KD-Validated Anti-Huntingtin Rabbit Monoclonal Antibody - Product Information**

Application	WB, FC, ICC
Primary Accession	<a href="#">P42858</a>
Reactivity	Rat, Human, Mouse
Clonality	Monoclonal
Isotype	Rabbit IgG
Calculated MW	Predicted, 348 kDa , observed , 348 kDa
Gene Name	HTT
Aliases	HTT; Huntingtin; IT15; HD; Huntington Disease Protein; Huntingtin (Huntington Disease); HD Protein; LOMARS
Immunogen	A synthesized peptide derived from human Huntingtin

**KD-Validated Anti-Huntingtin Rabbit Monoclonal Antibody - Additional Information**

Gene ID	3064
<b>Other Names</b>	
Huntingtin, Huntington disease protein, HD protein, Huntingtin, myristoylated N-terminal fragment, HTT, HD, IT15	

**KD-Validated Anti-Huntingtin Rabbit Monoclonal Antibody - Protein Information****Name** HTT**Synonyms** HD, IT15**Function**

[Huntingtin]: May play a role in microtubule-mediated transport or vesicle function.

**Cellular Location**

[Huntingtin]: Cytoplasm. Nucleus. Early endosome. Note=The mutant Huntingtin protein colocalizes with AKAP8L in the nuclear matrix of Huntington disease neurons. Shuttles between cytoplasm and nucleus in a Ran GTPase- independent manner (PubMed:15654337). Recruits onto early endosomes in a Rab5- and HAP40-dependent fashion (PubMed:16476778)

**Tissue Location**

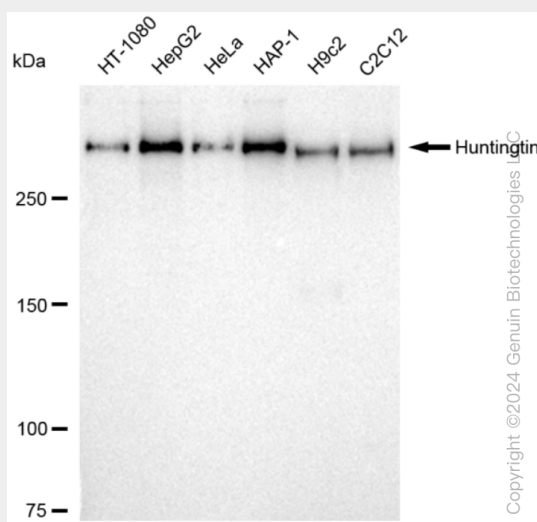
Expressed in the brain cortex (at protein level). Widely expressed with the highest level of expression in the brain (nerve fibers, varicosities, and nerve endings). In the brain, the regions where it can be mainly found are the cerebellar cortex, the neocortex, the striatum, and the hippocampal formation

## KD-Validated Anti-Huntingtin Rabbit Monoclonal Antibody - Protocols

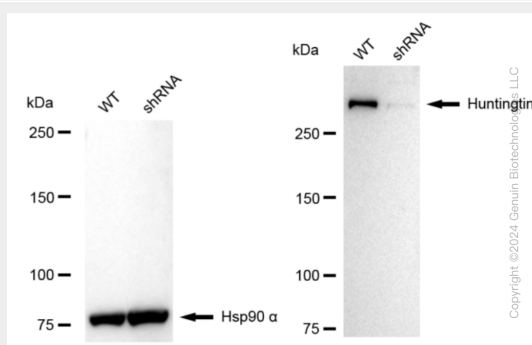
Provided below are standard protocols that you may find useful for product applications.

- [Western Blot](#)
- [Blocking Peptides](#)
- [Dot Blot](#)
- [Immunohistochemistry](#)
- [Immunofluorescence](#)
- [Immunoprecipitation](#)
- [Flow Cytometry](#)
- [Cell Culture](#)

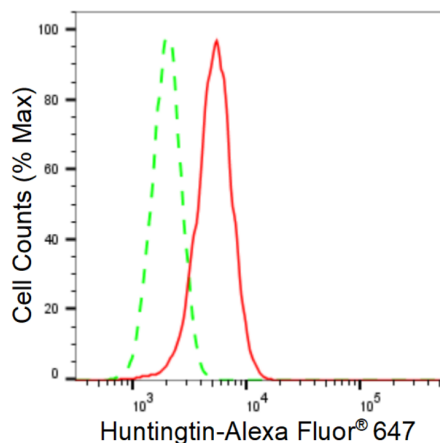
## KD-Validated Anti-Huntingtin Rabbit Monoclonal Antibody - Images



Western blotting analysis using anti-Huntingtin antibody (Cat#AGI1560). Total cell lysates (30 µg) from various cell lines were loaded and separated by SDS-PAGE. The blot was incubated with anti-Huntingtin antibody (Cat#AGI1560, 1:5,000) and HRP-conjugated goat anti-rabbit secondary antibody respectively.

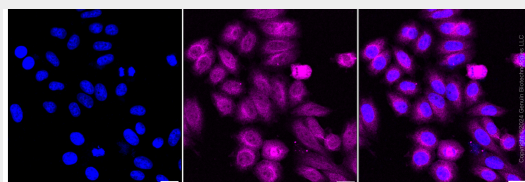


Western blotting analysis using anti-Huntingtin antibody (Cat#AGI1560). Huntingtin expression in wild type (WT) and Huntingtin shRNA knockdown (KD) HeLa cells with 20 µg of total cell lysates. Hsp90 α serves as a loading control. The blot was incubated with anti-Huntingtin antibody (Cat#AGI1560, 1:5,000) and HRP-conjugated goat anti-rabbit secondary antibody respectively.



Copyright ©2024 Genuin Biotechnologies LLC

Flow cytometric analysis of Huntingtin expression in HepG2 cells using Huntingtin antibody (Cat#AGI1560, 1:2,000). Green, isotype control; red, Huntingtin.



Immunocytochemical staining of HepG2 cells with anti-Huntingtin antibody (Cat#AGI1560, 1:1,000). Nuclei were stained blue with DAPI; Huntingtin was stained magenta with Alexa Fluor® 647. Images were taken using Leica stellaris 5. Protein abundance based on laser Intensity and smart gain: Medium. Scale bar: 20 µm.