

KD-Validated Anti-Goosecoid homeobox Rabbit Monoclonal Antibody
Rabbit monoclonal antibody
Catalog # AGI1568**Specification**

KD-Validated Anti-Goosecoid homeobox Rabbit Monoclonal Antibody - Product Information

Application	WB
Primary Accession	P56915
Reactivity	Rat, Human, Mouse
Clonality	Monoclonal
Isotype	Rabbit IgG
Calculated MW	Predicted, 28 kDa , observed , 28 kDa KDa
Gene Name	GSC
Aliases	GSC; Goosecoid Homeobox; Homeobox Protein Goosecoid; GSC1; SAMS
Immunogen	A synthesized peptide derived from human GSC

KD-Validated Anti-Goosecoid homeobox Rabbit Monoclonal Antibody - Additional Information

Gene ID	145258
Other Names	
Homeobox protein goosecoid, GSC	

KD-Validated Anti-Goosecoid homeobox Rabbit Monoclonal Antibody - Protein Information**Name** GSC**Function**

Regulates chordin (CHRD). May play a role in spatial programing within discrete embryonic fields or lineage compartments during organogenesis. In concert with NKX3-2, plays a role in defining the structural components of the middle ear; required for the development of the entire tympanic ring (By similarity). Probably involved in the regulatory networks that define neural crest cell fate specification and determine mesoderm cell lineages in mammals.

Cellular Location

Nucleus.

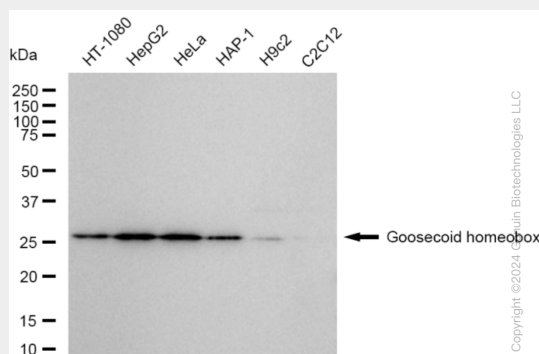
KD-Validated Anti-Goosecoid homeobox Rabbit Monoclonal Antibody - Protocols

Provided below are standard protocols that you may find useful for product applications.

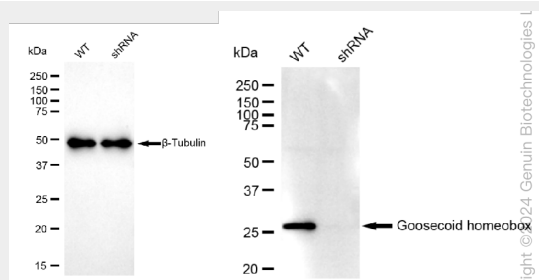
- [Western Blot](#)

- [Blocking Peptides](#)
- [Dot Blot](#)
- [Immunohistochemistry](#)
- [Immunofluorescence](#)
- [Immunoprecipitation](#)
- [Flow Cytometry](#)
- [Cell Culture](#)

KD-Validated Anti-Goosecoid homeobox Rabbit Monoclonal Antibody - Images



Western blotting analysis using anti-Goosecoid homeobox antibody (Cat#AGI1568). Total cell lysates (30 µg) from various cell lines were loaded and separated by SDS-PAGE. The blot was incubated with anti-Goosecoid homeobox antibody (Cat#AGI1568, 1:5,000) and HRP-conjugated goat anti-rabbit secondary antibody respectively.



Western blotting analysis using anti-Goosecoid homeobox antibody (Cat#AGI1568). Goosecoid homeobox expression in wild type (WT) and Goosecoid homeobox shRNA knockdown (KD) HeLa cells with 30 µg of total cell lysates. β-Tubulin serves as a loading control. The blot was incubated with anti-Goosecoid homeobox antibody (Cat#AGI1568, 1:5,000) and HRP-conjugated goat anti-rabbit secondary antibody respectively.