

**KD-Validated Anti-Phospho-JunD (S255) Rabbit Monoclonal Antibody**  
**Rabbit monoclonal antibody**  
**Catalog # AGI1570****Specification****KD-Validated Anti-Phospho-JunD (S255) Rabbit Monoclonal Antibody - Product Information**

Application	WB, FC, ICC
Primary Accession	<a href="#">P17535</a>
Reactivity	Rat, Human, Mouse
Clonality	Monoclonal
Isotype	Rabbit IgG
Calculated MW	Predicted, 35 kDa , observed , 38,42 kDa
Gene Name	KDa
Aliases	JUND JUND; JunD Proto-Oncogene, AP-1 Transcription Factor Subunit; AP-1; Transcription Factor AP-1 Subunit JunD; Transcription Factor Jun-D; Transcription Factor JunD; Activator Protein 1; Jun D Proto-Oncogene; JunD-FL Isoform
Immunogen	A synthesized peptide derived from human JunD

**KD-Validated Anti-Phospho-JunD (S255) Rabbit Monoclonal Antibody - Additional Information**

Gene ID	3727
<b>Other Names</b>	
Transcription factor JunD, Transcription factor AP-1 subunit JunD, JUND	

**KD-Validated Anti-Phospho-JunD (S255) Rabbit Monoclonal Antibody - Protein Information****Name** JUND**Function**

Transcription factor binding AP-1 sites (PubMed:<a href="http://www.uniprot.org/citations/9989505" target="\_blank">9989505</a>). Heterodimerizes with proteins of the FOS family to form an AP-1 transcription factor complex, thereby enhancing their DNA binding activity to an AP-1 consensus sequence 3'-TGA[GC]TCA-5' and enhancing their transcriptional activity (PubMed:<a href="http://www.uniprot.org/citations/28981703" target="\_blank">28981703</a>, PubMed:<a href="http://www.uniprot.org/citations/9989505" target="\_blank">9989505</a>).

**Cellular Location**

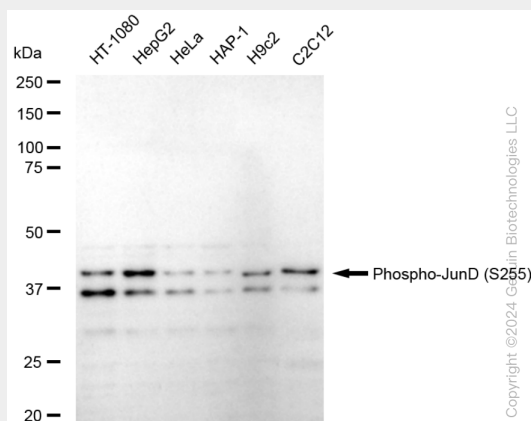
Nucleus.

## KD-Validated Anti-Phospho-JunD (S255) Rabbit Monoclonal Antibody - Protocols

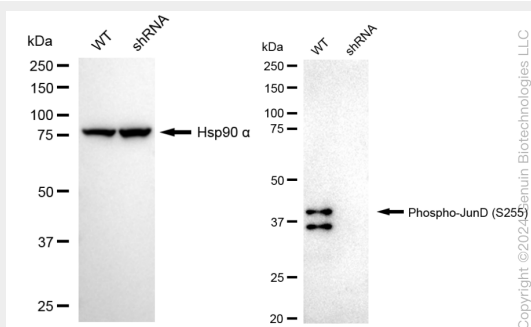
Provided below are standard protocols that you may find useful for product applications.

- [Western Blot](#)
- [Blocking Peptides](#)
- [Dot Blot](#)
- [Immunohistochemistry](#)
- [Immunofluorescence](#)
- [Immunoprecipitation](#)
- [Flow Cytometry](#)
- [Cell Culture](#)

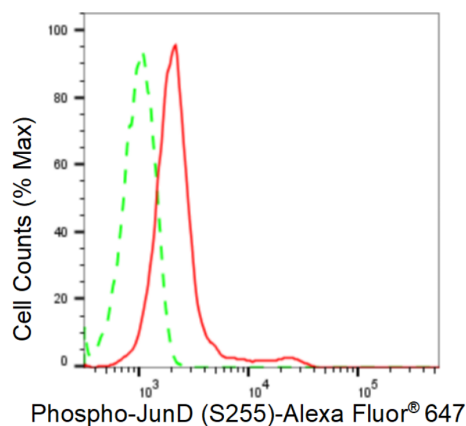
## KD-Validated Anti-Phospho-JunD (S255) Rabbit Monoclonal Antibody - Images



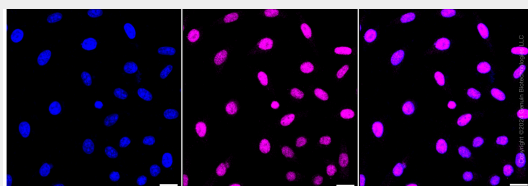
Western blotting analysis using anti-Phospho-JunD (S255) antibody (Cat#62216). Total cell lysates (30 µg) from various cell lines were loaded and separated by SDS-PAGE. The blot was incubated with anti-Phospho-JunD (S255) antibody (Cat#62216, 1:5,000) and HRP-conjugated goat anti-rabbit secondary antibody (Cat#201, 1:20,000) respectively. Image was developed using FeQ™ ECL Substrate Kit (Cat#226).



Western blotting analysis using anti-Phospho-JunD (S255) antibody (Cat#62216). Phospho-JunD (S255) expression in wild type (WT) and Phospho-JunD (S255) shRNA knockdown (KD) HeLa cells with 20 µg of total cell lysates. Hsp90 α serves as a loading control. The blot was incubated with anti-Phospho-JunD (S255) antibody (Cat#62216, 1:5,000) and HRP-conjugated goat anti-rabbit secondary antibody (Cat#201, 1:20,000) respectively. Image was developed using NaQ™ ECL Substrate Kit (Cat#716).



Flow cytometric analysis of Phospho-JunD (S255) expression in HepG2 cells using Phospho-JunD (S255) antibody (Cat#62216, 1:2,000). Green, isotype control; red, Phospho-JunD (S255).



Immunocytochemical staining of HepG2 cells with anti-Phospho-JunD (S255) antibody (Cat#62216, 1:1,000). Nuclei were stained blue with DAPI; Phospho-JunD (S255) was stained magenta with Alexa Fluor® 647. Images were taken using Leica stellaris 5. Protein abundance based on laser Intensity and smart gain: Medium. Scale bar: 20 µm.