

KD-Validated Anti-Eukaryotic translation elongation factor 2 Rabbit Monoclonal Antibody
Antibody
Rabbit monoclonal antibody
Catalog # AGI1573

Specification

KD-Validated Anti-Eukaryotic translation elongation factor 2 Rabbit Monoclonal Antibody
- Product Information

Application	WB, FC, ICC
Primary Accession	P13639
Reactivity	Rat, Human, Mouse
Clonality	Monoclonal
Isotype	Rabbit IgG
Calculated MW	Predicted, 95 kDa , observed, 95 kDa KDa
Gene Name	EEF2
Aliases	EEF2; Eukaryotic Translation Elongation Factor 2; EEF-2; EF2; Polypeptidyl-TRNA Translocase; Elongation Factor 2; EF-2; Epididymis Secretory Sperm Binding Protein; EC 3.6.5.-; SCA26
Immunogen	A synthesized peptide derived from human EEF2

KD-Validated Anti-Eukaryotic translation elongation factor 2 Rabbit Monoclonal Antibody
- Additional Information

Gene ID	1938
Other Names	
Elongation factor 2, EF-2, 3.6.5.-, EEF2, EF2	

KD-Validated Anti-Eukaryotic translation elongation factor 2 Rabbit Monoclonal Antibody
- Protein Information

Name EEF2

Synonyms EF2

Function

Catalyzes the GTP-dependent ribosomal translocation step during translation elongation (PubMed: [26593721](http://www.uniprot.org/citations/26593721)). During this step, the ribosome changes from the pre-translocational (PRE) to the post-translocational (POST) state as the newly formed A-site-bound peptidyl- tRNA and P-site-bound deacylated tRNA move to the P and E sites, respectively (PubMed: [26593721](http://www.uniprot.org/citations/26593721)). Catalyzes the coordinated movement of the two tRNA molecules, the mRNA and conformational changes in the ribosome (PubMed: [26593721](http://www.uniprot.org/citations/26593721)).

Cellular Location

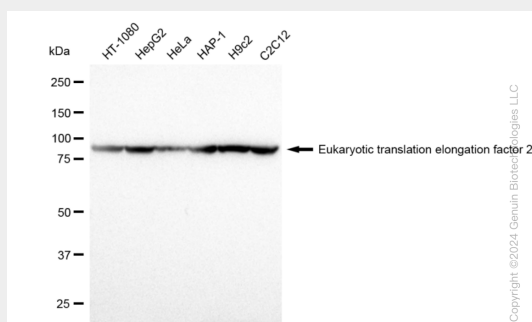
Cytoplasm. Nucleus. Note=Phosphorylation by CSK promotes cleavage and SUMOylation-dependent nuclear translocation of the C- terminal cleavage product.

KD-Validated Anti-Eukaryotic translation elongation factor 2 Rabbit Monoclonal Antibody - Protocols

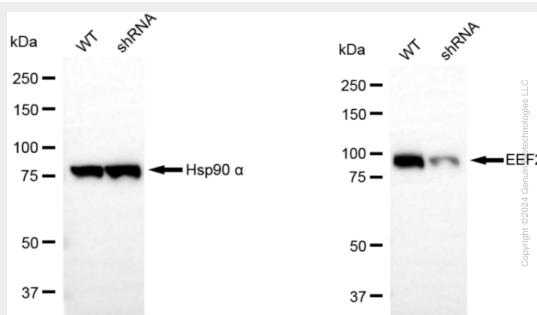
Provided below are standard protocols that you may find useful for product applications.

- [Western Blot](#)
- [Blocking Peptides](#)
- [Dot Blot](#)
- [Immunohistochemistry](#)
- [Immunofluorescence](#)
- [Immunoprecipitation](#)
- [Flow Cytometry](#)
- [Cell Culture](#)

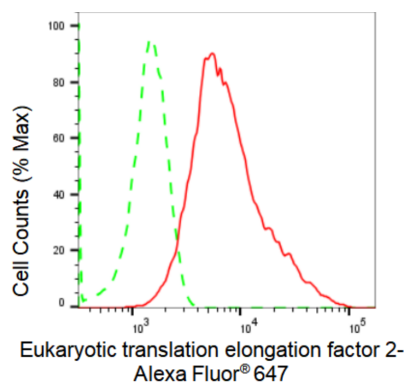
KD-Validated Anti-Eukaryotic translation elongation factor 2 Rabbit Monoclonal Antibody - Images



Western blotting analysis using anti-Eukaryotic translation elongation factor 2 antibody (Cat#AGI1573). Total cell lysates (30 µg) from various cell lines were loaded and separated by SDS-PAGE. The blot was incubated with anti-Eukaryotic translation elongation factor 2 antibody (Cat#AGI1573, 1:5,000) and HRP-conjugated goat anti-rabbit secondary antibody respectively.

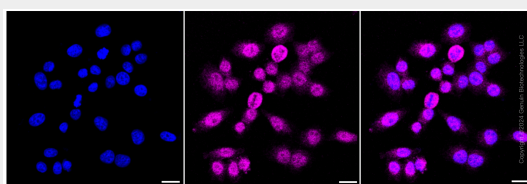


Western blotting analysis using anti-Eukaryotic translation elongation factor 2 antibody (Cat#AGI1573). Eukaryotic translation elongation factor 2 expression in wild type (WT) and Eukaryotic translation elongation factor 2 shRNA knockdown (KD) HeLa cells with 30 µg of total cell lysates. β-Tubulin serves as a loading control. The blot was incubated with anti-Eukaryotic translation elongation factor 2 antibody (Cat#AGI1573, 1:5,000) and HRP-conjugated goat anti-rabbit secondary antibody respectively.



Copyright ©2024 Genun Biotechnologies LLC

Flow cytometric analysis of Eukaryotic translation elongation factor 2 expression in HepG2 cells using Eukaryotic translation elongation factor 2 antibody (Cat#AGI1573, 1:2,000). Green, isotype control; red, Eukaryotic translation elongation factor 2.



Immunocytochemical staining of HepG2 cells with Eukaryotic translation elongation factor 2 antibody (Cat#AGI1573, 1:1,000). Nuclei were stained blue with DAPI; Eukaryotic translation elongation factor 2 was stained magenta with Alexa Fluor® 647. Images were taken using Leica stellaris 5. Protein abundance based on laser Intensity and smart gain: Medium. Scale bar: 20 µm.