

KD-Validated Anti-HDHD5 Rabbit Monoclonal Antibody
Rabbit monoclonal antibody
Catalog # AGI1574**Specification**

KD-Validated Anti-HDHD5 Rabbit Monoclonal Antibody - Product Information

Application	WB, FC, ICC
Primary Accession	Q9BXW7
Reactivity	Human
Clonality	Monoclonal
Isotype	Rabbit IgG
Calculated MW	Predicted, 46 kDa , observed , 37 kDa KDa
Gene Name	HDHD5
Aliases	HDHD5; Haloacid Dehalogenase Like Hydrolase Domain Containing 5; CECR5; Haloacid Dehalogenase-Like Hydrolase Domain-Containing 5; Cat Eye Syndrome Chromosome Region, Candidate 5; Cat Eye Syndrome Critical Region Protein 5
Immunogen	A synthesized peptide derived from human CECR5

KD-Validated Anti-HDHD5 Rabbit Monoclonal Antibody - Additional Information

Gene ID	27440
Other Names	
Haloacid dehalogenase-like hydrolase domain-containing 5 {ECO:0000312 HGNC:HGNC:1843}, Cat eye syndrome critical region protein 5, HDHD5 (HGNC:1843)	

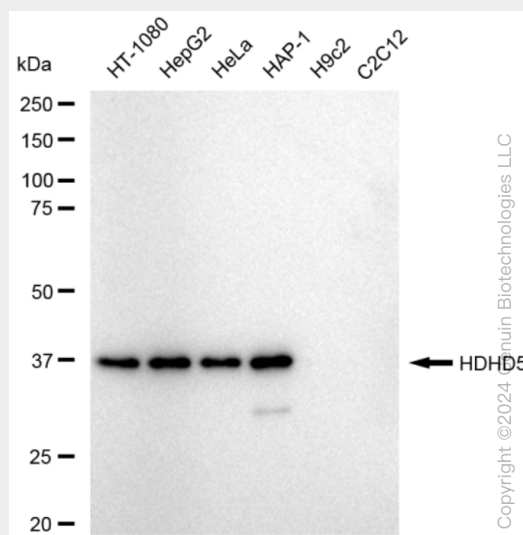
KD-Validated Anti-HDHD5 Rabbit Monoclonal Antibody - Protein Information**Name** HDHD5 ([HGNC:1843](#))**Tissue Location**
Widely expressed.**KD-Validated Anti-HDHD5 Rabbit Monoclonal Antibody - Protocols**

Provided below are standard protocols that you may find useful for product applications.

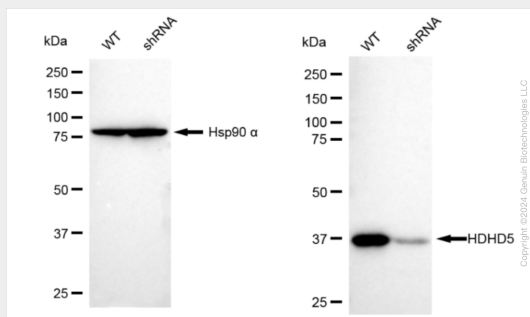
- [Western Blot](#)
- [Blocking Peptides](#)
- [Dot Blot](#)
- [Immunohistochemistry](#)

- [Immunofluorescence](#)
- [Immunoprecipitation](#)
- [Flow Cytometry](#)
- [Cell Culture](#)

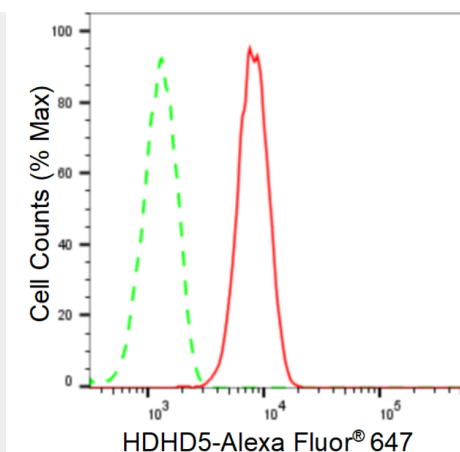
KD-Validated Anti-HDHD5 Rabbit Monoclonal Antibody - Images



Western blotting analysis using anti-HDHD5 antibody (Cat#AGI1574). Total cell lysates (30 µg) from various cell lines were loaded and separated by SDS-PAGE. The blot was incubated with anti-HDHD5 antibody (Cat#AGI1574, 1:5,000) and HRP-conjugated goat anti-rabbit secondary antibody respectively.

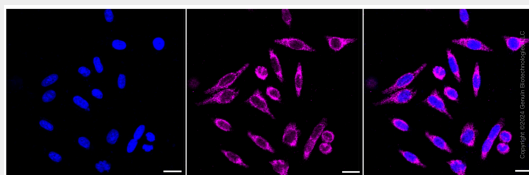


Western blotting analysis using anti-HDHD5 antibody (Cat#AGI1574). HDHD5 expression in wild type (WT) and HDHD5 shRNA knockdown (KD) HeLa cells with 20 µg of total cell lysates. Hsp90 α serves as a loading control. The blot was incubated with anti-HDHD5 antibody (Cat#AGI1574, 1:5,000) and HRP-conjugated goat anti-rabbit secondary antibody respectively.



Copyright ©2024 Genuin Biotechnologies LLC

Flow cytometric analysis of HDHD5 expression in HepG2 cells using anti-HDHD5 antibody (Cat#AGI1574, 1:2,000). Green, isotype control; red, HDHD5.



Immunocytochemical staining of HepG2 cells with anti-HDHD5 antibody (Cat#AGI1574, 1:1,000). Nuclei were stained blue with DAPI; HDHD5 was stained magenta with Alexa Fluor® 647. Images were taken using Leica stellaris 5. Protein abundance based on laser Intensity and smart gain: Medium. Scale bar: 20 μ m.