

**KD-Validated Anti-GATAD2A Rabbit Monoclonal Antibody**  
**Rabbit monoclonal antibody**  
**Catalog # AGI1580****Specification****KD-Validated Anti-GATAD2A Rabbit Monoclonal Antibody - Product Information**

Application	WB, FC
Primary Accession	<a href="#">Q86YP4</a>
Reactivity	Human, Mouse
Clonality	Monoclonal
Isotype	Rabbit IgG
Calculated MW	Predicted, 68 kDa , observed , 68 kDa KDa
Gene Name	GATAD2A
Aliases	GATAD2A; GATA Zinc Finger Domain Containing 2A; GATA Zinc Finger Domain-Containing Protein 2A; Transcriptional Repressor P66-Alpha; P66alpha; P66 Alpha; Hp66alpha; P66ALPHA
Immunogen	A synthesized peptide derived from human p66 alpha

**KD-Validated Anti-GATAD2A Rabbit Monoclonal Antibody - Additional Information**

Gene ID	54815
<b>Other Names</b>	
Transcriptional repressor p66-alpha, Hp66alpha, GATA zinc finger domain-containing protein 2A, GATAD2A	

**KD-Validated Anti-GATAD2A Rabbit Monoclonal Antibody - Protein Information****Name** GATAD2A**Function**

Transcriptional repressor (PubMed:<a href="http://www.uniprot.org/citations/12183469" target="\_blank">12183469</a>, PubMed:<a href="http://www.uniprot.org/citations/16415179" target="\_blank">16415179</a>). Acts as a component of the histone deacetylase NuRD complex which participates in the remodeling of chromatin (PubMed:<a href="http://www.uniprot.org/citations/16428440" target="\_blank">16428440</a>, PubMed:<a href="http://www.uniprot.org/citations/28977666" target="\_blank">28977666</a>). Enhances MBD2-mediated repression (PubMed:<a href="http://www.uniprot.org/citations/12183469" target="\_blank">12183469</a>, PubMed:<a href="http://www.uniprot.org/citations/16415179" target="\_blank">16415179</a>). Efficient repression requires the presence of GATAD2B (PubMed:<a href="http://www.uniprot.org/citations/16415179" target="\_blank">16415179</a>).

**Cellular Location**

Nucleus speckle. Nucleus. Chromosome. Note=Speckled nuclear localization requires both CR1 and CR2 regions (PubMed:16415179). Localizes to sites of DNA damage in a manner partially

dependent on ZMYND8 (PubMed:27732854).

#### Tissue Location

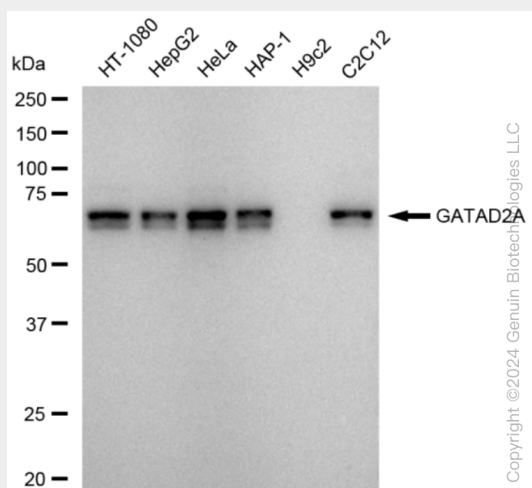
Ubiquitous, both in fetal and adult tissues.

### KD-Validated Anti-GATAD2A Rabbit Monoclonal Antibody - Protocols

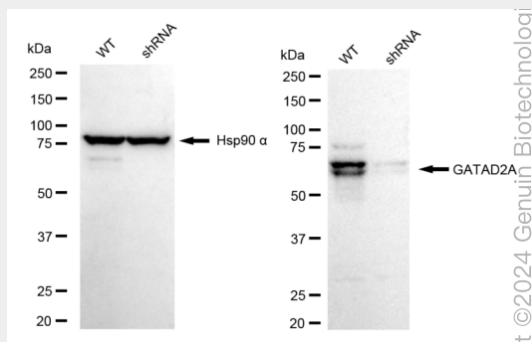
Provided below are standard protocols that you may find useful for product applications.

- [Western Blot](#)
- [Blocking Peptides](#)
- [Dot Blot](#)
- [Immunohistochemistry](#)
- [Immunofluorescence](#)
- [Immunoprecipitation](#)
- [Flow Cytometry](#)
- [Cell Culture](#)

### KD-Validated Anti-GATAD2A Rabbit Monoclonal Antibody - Images

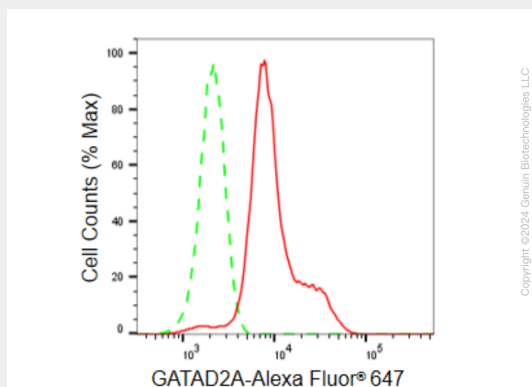


Western blotting analysis using anti-GATAD2A antibody (Cat#62251). Total cell lysates (30 µg) from various cell lines were loaded and separated by SDS-PAGE. The blot was incubated with anti-GATAD2A antibody (Cat#62251, 1:5,000) and HRP-conjugated goat anti-rabbit secondary antibody (Cat#201, 1:20,000) respectively. Image was developed using FeQ™ ECL Substrate Kit (Cat#226).



Western blotting analysis using anti-GATAD2A antibody (Cat#62251). GATAD2A expression in

wild type (WT) and GATAD2A shRNA knockdown (KD) HeLa cells with 30 µg of total cell lysates. Hsp90 α serves as a loading control. The blot was incubated with anti-GATAD2A antibody (Cat#62251, 1:5,000) and HRP-conjugated goat anti-rabbit secondary antibody (Cat#201, 1:20,000) respectively. Image was developed using FeQ™ ECL Substrate Kit (Cat#226).



Flow cytometric analysis of GATAD2A expression in HeLa cells using GATAD2A antibody (Cat#62251, 1:2,000). Green, isotype control; red, GATAD2A.